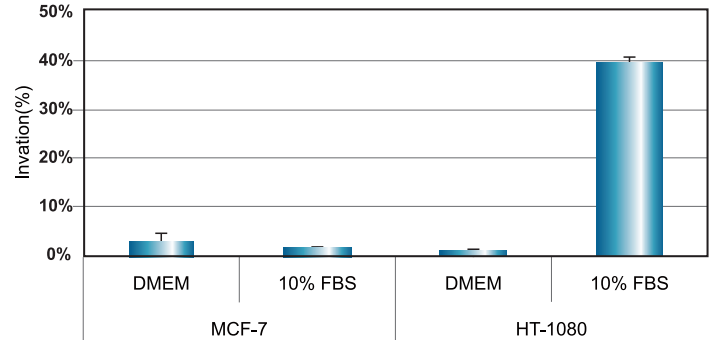
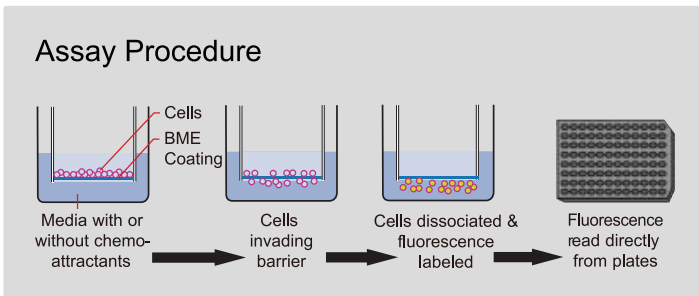


# Cancer Cell Assays

## Cell Invasion

Cultrex® Cell Invasion Assays accelerate the screening process for compounds that influence cell invasion through in vitro extracellular matrices. The assay has been functionally tested with MCF-7, HT-1080, NIH-3T3, and MDA-MB-231 cell lines.

Description	Size	Catalog No.
Cultrex 24 Well BME Cell Invasion Assay	24 Samples	3455-024-K



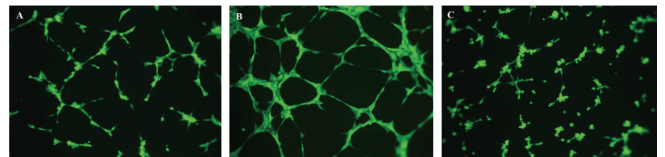
Quantitation of the ability of the human fibroblastic cell line, HT-1080, to cross a barrier consisting of an 8 micron polycarbonate filter occluded with Cultrex Basement Membrane Extract over a 24 hour period in response to 10% FBS. Samples were run in triplicate for both HT-1080 and the non-invasive MCF-7, mammary epithelial cell line.

## Tube Formation

The tube formation kit contains all the components necessary to perform the assay, including Growth Factor Reduced Basement Membrane Extract (BME), Calcein AM, Cell Staining Solution, and Sulforaphane.

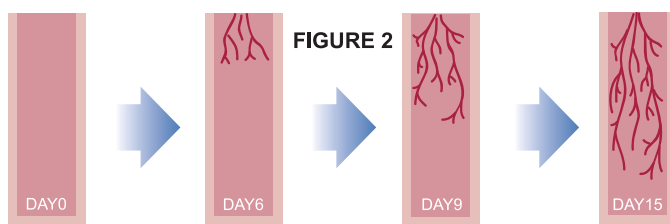
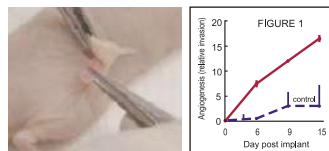
Description	Size	Detection	Catalog No.
Cultrex In Vitro Angiogenesis Assay Tube Formation Kit	96 Tests	Fluorometric/ Phase Contrast	3470-096-K

Note: Positive controls are available separately. Please refer to the Instructions for Use manual with kit.



## In Vivo Angiogenesis Assay DIVAA™ (Directed In Vivo Angiogenesis Assay)

The DIVAA kits provide implant grade silicone cylinders closed at one end, called angioreactors. The angioreactors are filled with 20 µl of Trevigen's Basement Membrane Extract (BME) pre-mixed with or without angiogenesis modulating factors.

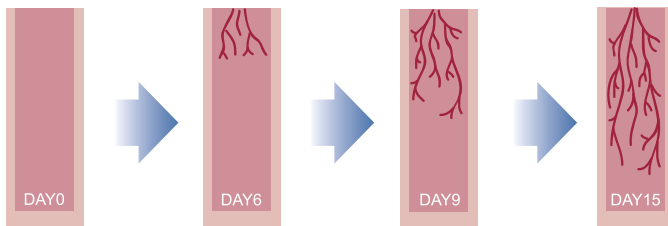
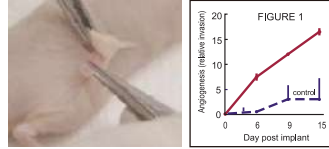


Description	Size	Catalog No.
DIVAA Starter Kit	48 Angioreactors	3450-048-SK
DIVAA Activation Kit	48 Angioreactors	3450-048-K
DIVAA Inhibition Kit	48 Angioreactors	3450-048-IK
AngioRack™	1 Rack	3450-048-09

# Tools for **Angiogenesis Assay** • Easy • 정량화 가능

## In Vivo Angiogenesis Assay DIVAA™ (Directed In Vivo Angiogenesis Assay)

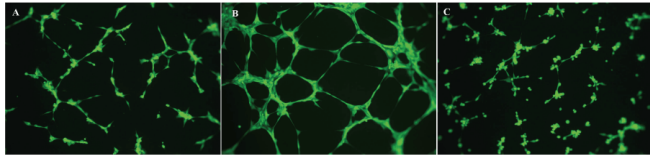
The DIVAA kits provide implant grade silicone cylinders closed at one end, called angioreactors. The angioreactors are filled with 20 µl of Trevigen's Basement Membrane Extract (BME) pre-mixed with or without angiogenesis modulating factors.



Description	Size	Catalog No.
DIVAA Starter Kit	48 Angioreactors	3450-048-SK
DIVAA Activation Kit	48 Angioreactors	3450-048-K
DIVAA Inhibition Kit	48 Angioreactors	3450-048-IK
AngioRack™	1 Rack	3450-048-09
DIVAA FGF-2(1.8µg)/ VEGF(600ng)		3450-048-B10
DIVAA FGF-2(300ng)/ VEGF(100ng)		3450-048-B9

## In Vitro Angiogenesis Assay (Tube Formation Assay)

The tube formation kit contains all the components necessary to perform the assay, including Growth Factor Reduced Basement Membrane Extract (BME), Calcein AM, Cell Staining Solution, and Sulforaphane.



Description	Size	Detection	Catalog No.
Cultrex In Vitro Angiogenesis Assay Tube Formation Kit	96 Tests	Fluorometric/ Phase Contrast	3470-096-K

Note: Positive controls are available separately. Please refer to the Instructions for Use manual with kit.

## Cell Invasion

Cultrex® Cell Invasion Assays accelerate the screening process for compounds that influence cell invasion through in vitro extracellular matrices. The assay has been functionally tested with MCF-7, HT-1080, NIH-3T3, and MDA-MB-231 cell lines.

Description	Size	Catalog No.
DIVAA Starter Kit	48 Angioreactors	3450-048-SK

