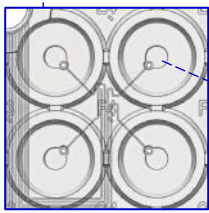
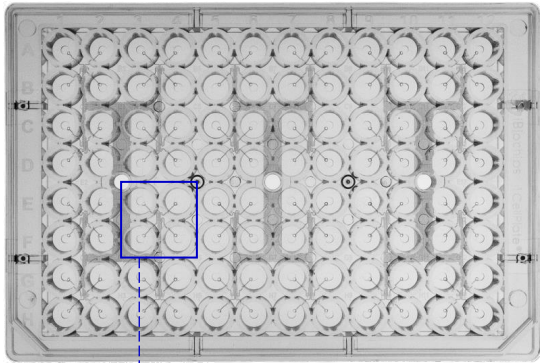


Single Cell Isolation



Isolate 1 cell in 2.5 μ L volume

- Single Cell Isolation
- Single Cell Cloning
- Target / Rare Cell Isolation
- CRISPR Cell line development
- Single Cell PCR & Sequencing

1Cell Plate 96well

#P1-SCP-10PK/ #P1-SCP-5PK

: Microfluidic plate in 96 well format

: Automated liquid Handling 장비와 호환 가능 (특정)

Specifications	Description
Size of Device	Standard well plate form factor
Number of Well	96 wells (32 outlet wells x 3 inlet ports)
Size of Well	2 mm (diameter), 2 mm (height)
Working Volume	6 μ L per outlet well / 100
Compatible	$\leq 80 \mu$ m
Isolated Single Cells #	~ 30 single cells per plate
Sterilization of Device	Sterilized by UV
Bottom coating of Well	Non-treated (suitable for single-cell retrieval for PCR) or Tissue culture treated upon request (suitable for single-cell cloning)
Material of Device	Polystyrene & Adhesive Film (medical grade)

New



3D로 Single cell culture하자!

Single cell isolation & 3D culture kit 출시!

#K2-SCTD-KIT (1Cell Plate 5ea + Hydrogel)

Just Pipette Operation

1

Bulk Cells Adding

~ 30 cells/100 μ L per Inle

2

Single-Cell Isolation

$\sim 3 \mu$ L single cell volume per well

3

Single-Cell Cloning

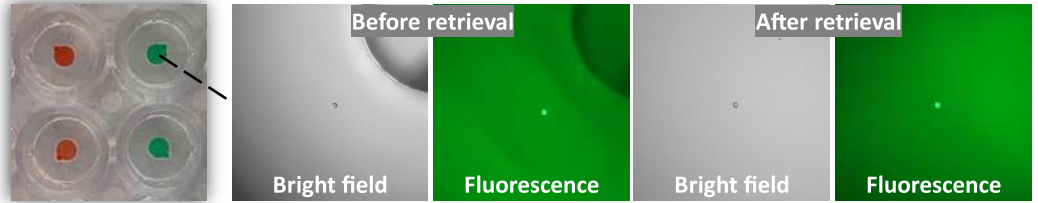
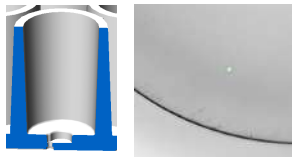
$\sim 200 \mu$ L culture medium per well



Single-Cell Isolation

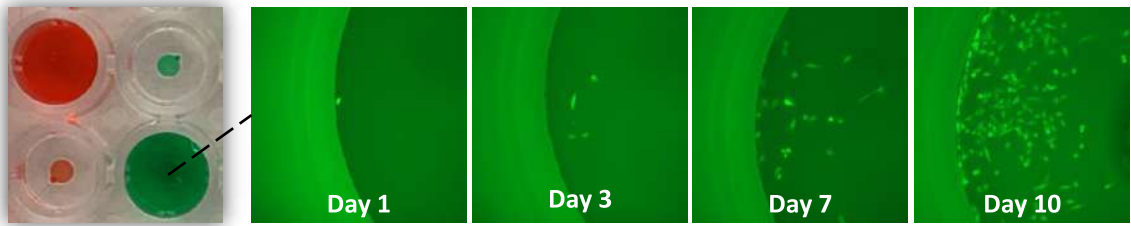
- Easy to operate with high efficiency
- High integrity for single-cell PCR

An Isolated GFP Labeled Cell



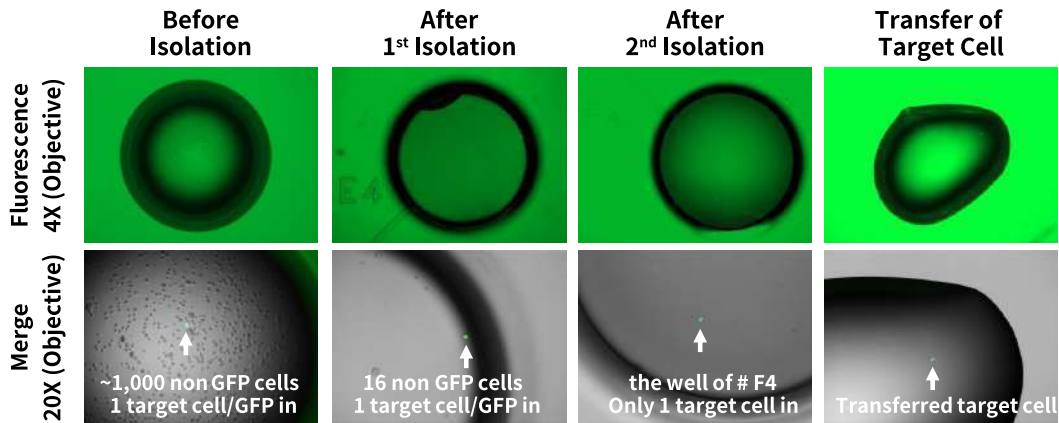
Single-Cell Cloning

- High cell viability for clonal analysis
- Easy to track whole cloning process



Rare-Cell Isolation

- From CRISPR gene edited cells
- From clinical samples



Single-Cell PCR

