

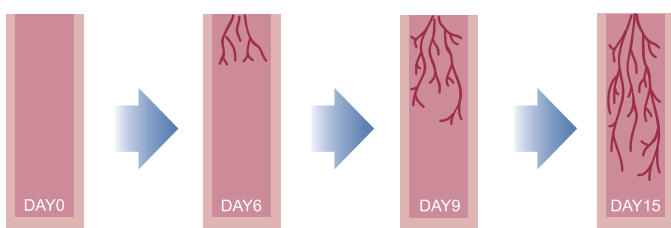
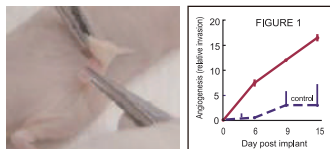
Tools for Angiogenesis Assay

• Easy
• 정량화 가능

In Vivo Angiogenesis Assay

DIVAA™ (Directed In Vivo Angiogenesis Assay)

The DIVAA kits provide implant grade silicone cylinders closed at one end, called angioreactors. The angioreactors are filled with 20 µl of Trevigen's Basement Membrane Extract (BME) pre-mixed with or without angiogenesis modulating factors.

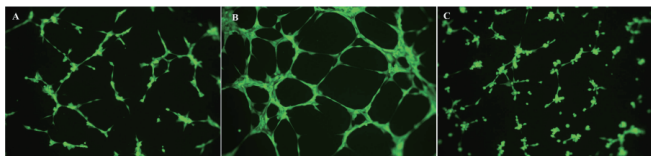


Description	Size	Catalog No.
DIVAA Starter Kit	48 Angioreactors	3450-048-SK
DIVAA Activation Kit	48 Angioreactors	3450-048-K
DIVAA Inhibition Kit	48 Angioreactors	3450-048-IK
AngioRack™	1 Rack	3450-048-09
DIVAA FGF-2(1.8µg)/ VEGF(600ng)		3450-048-B10
DIVAA FGF-2(300ng)/ VEGF(100ng)		3450-048-B9

In Vitro Angiogenesis Assay

(Tube Formation Assay)

The tube formation kit contains all the components necessary to perform the assay, including Growth Factor Reduced Basement Membrane Extract (BME), Calcein AM, Cell Staining Solution, and Sulforaphane.



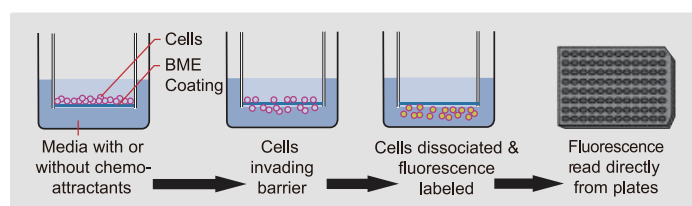
Description	Size	Detection	Catalog No.
Cultrex In Vitro Angiogenesis Assay Tube Formation Kit	96 Tests	Fluorometric/ Phase Contrast	3470-096-K

Note: Positive controls are available separately. Please refer to the Instructions for Use manual with kit.

Cell Invasion

Cultrex® Cell Invasion Assays accelerate the screening process for compounds that influence cell invasion through in vitro extracellular matrices. The assay has been functionally tested with MCF-7, HT-1080, NIH-3T3, and MDA-MB-231 cell lines.

Description	Size	Catalog No.
Cultrex 24 Well Cell Migration Assay	24 Samples	3455-024-K
Cultrex 96 Well Cell Migration Assay	96 Samples	3455-096-K
Cultrex In vitro Angiogenesis Assay(EC Invasion)	96 Well	3471-096-K



Cell Migration

Trevigen's Cultrex® Cell Migration Assay utilizes a simplified Boyden chamber design with an 8 micron polyethylene terephthalate (PET) membrane.

Description	Size	Catalog No.
Cultrex 24 Well Cell Migration Assay	24 Samples	3465-024-K
Cultrex 96 Well Cell Migration Assay	96 Samples	3465-096-K

R&D SYSTEMS
a biotechné brand

웅비메디텍
02.881.5432

Organoid Culture Matrix 추천

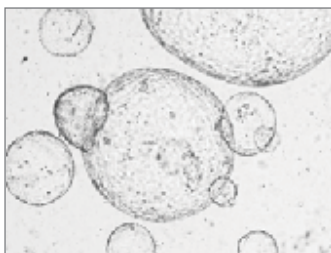
- BME Type2
- BME TypeR1
- UltiMatrix BME

• Lot variation 걱정 No!

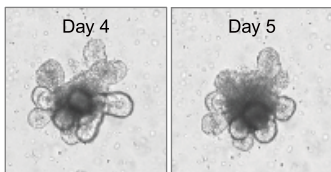
• RnD의 간단한 QC 통과 제품들

Research Area	Name	Catalog#		Notes
Stem Cells	Cultrex® Stem Cell Qualified RGF BME	3434-001-02	1 mL	For attachment and maintenance of Stem Cells
		3434-005-02	5 mL	
*Organoid	Cultrex® RGF BME, Type2	3533-001-02	1 mL	For robust Organoid Cultures
		3533-005-02	5 mL	
		3533-010-02	2 x 5 mL	
	Cultrex® RGF BME, Type R1	3433-001-R1	1 mL	For Difficult to Grow Organoid Culture
		3433-005-R1	5 mL	
		3433-010-R1	2 x 5 mL	
*Organoid & Stem Cell	Cultrex® UltiMatrix RGF BME	BME001-01	1 mL	Enhancements and performance benefits for 2D and 3D cell culture
		BME001-05	5 mL	
		BME001-10	2 x 5 mL	
3D Tissue Spheroids	Cultrex® 3D Culture Matrix™ RGF BME	3445-001-01	1 mL	For 3D Culture
		3445-005-01	5 mL	
		3445-010-01	2 x 5 mL	
Cancer/ Tumorspheres	Cultrex® BME, Type3	3632-001-02	1 mL	For Xenograft / Tumorgrafts
		3632-005-02	5 mL	
		3632-010-02	2 x 5 mL	
General	Cultrex® BME	3432-001-01	1 mL	For General (2D & 3D Culture, Attachment, Invasion, etc.)
		3432-005-01	5 mL	
		3432-010-01	2 x 5 mL	

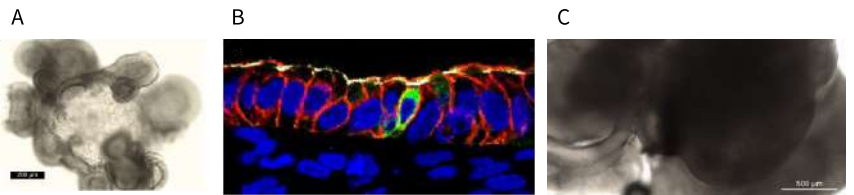
*Organoid culture 용으로 추천제품: 특히 BME, TypeR1은 entactin 함유량이 많아 tissue 및 organoid를 culture 하는데 적합
-대부분이 Pathclear® 제품으로 LDEV-free



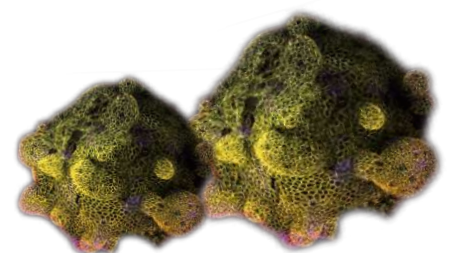
Human Pancreatic Organoids Cultured in Cultrex® Reduced Growth Factor BME, Type 2.



Growth of Mouse Colon Organoids in Cultrex® Reduced Growth Factor BME, Type R1.



Human Descending Colon Organoids(A), iPSC-derived Intestinal Organoids(B), and iPSC-derived Cerebral Organoids(C) grown in Cultrex UltiMatrix RGF BME.



R&D SYSTEMS
a biotechne brand

웅비메디텍
02.881.5432