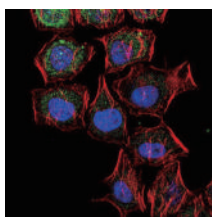
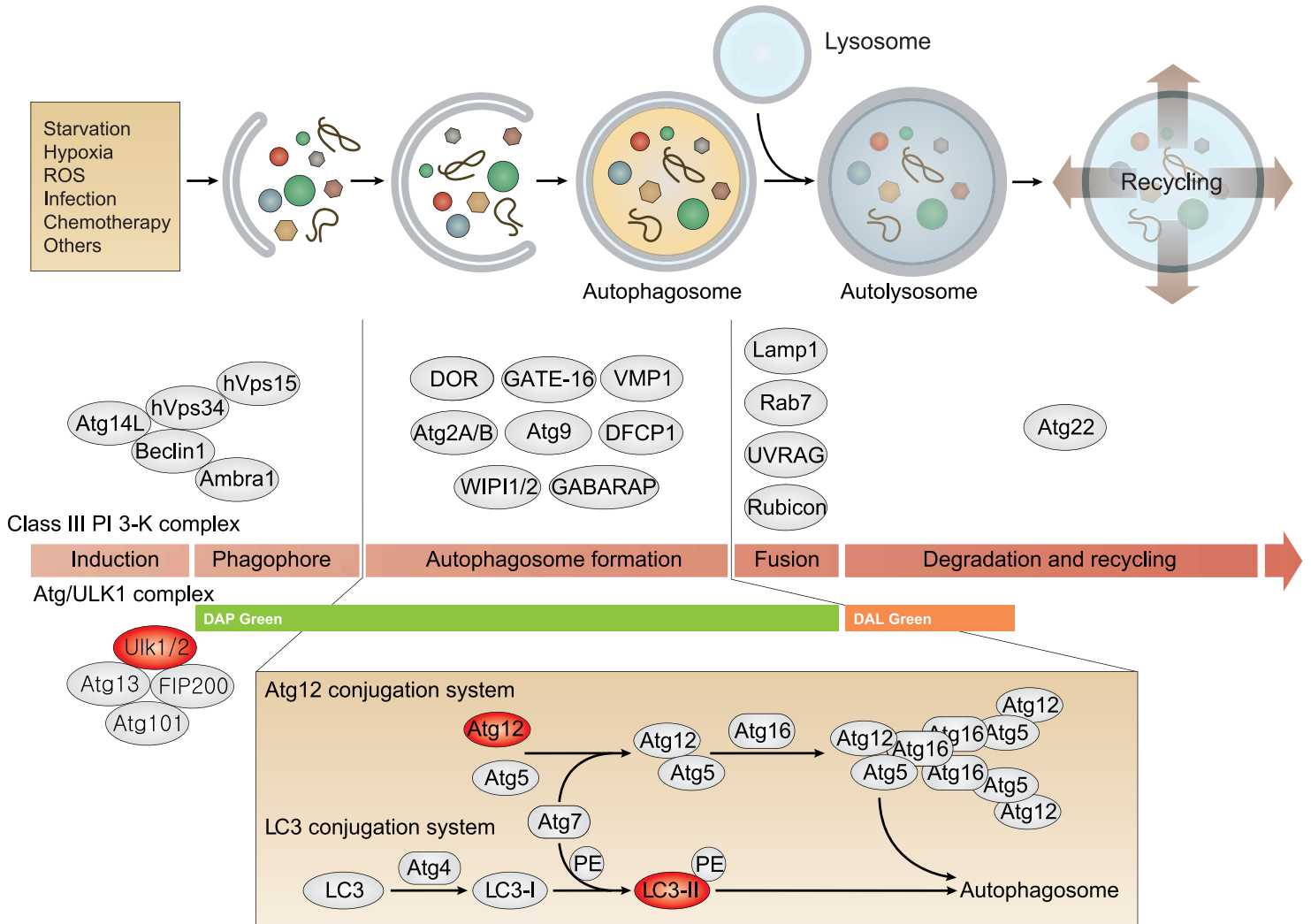
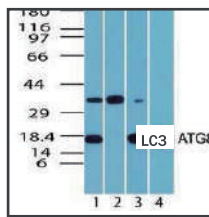


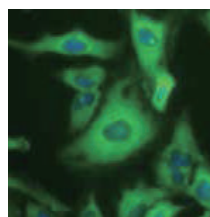
Autophagy 처음부터 끝까지, a biotechne brand



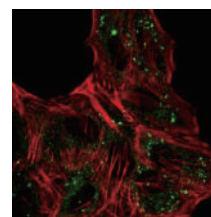
LC3B, NB600-1384
ICC, HeLa cells



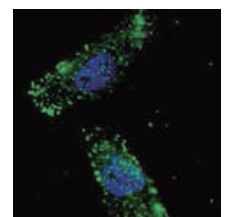
LC3, NBP2-24392
WB, brain tissues
(Novus)



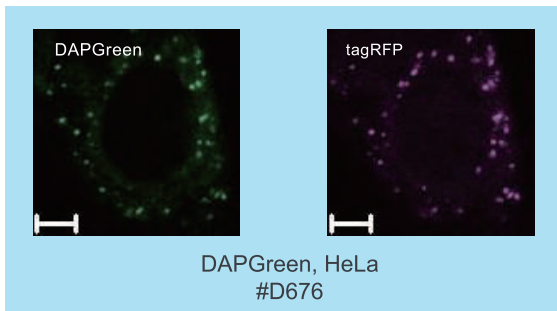
p62/SQSTM1, NBP1-42821
ICC, HeLa cells
(Novus)



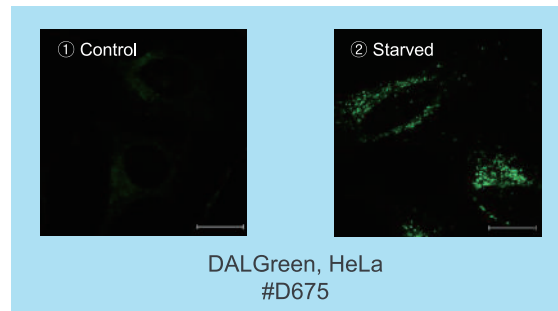
AIG12, NBP2-43781
ICC, HeLa cells



ULK1, NBP2-29922
ICC, U251 cells
(Novus)



DAPGreen, HeLa
#D676



DALGreen, HeLa
#D675

Related Product

Target	Catalog #	Species	Applications
ULK1	NBP2-24738	H, M, Pr	WB, IHC
ULK2	NBP1-33136	H, M	WB, ICC, IHC
Phospho-ATG13 (S318)	NBP2-19127	H	WB, ELISA
FIP200	NB100-77279	H, M	WB, IP
ATG101	NBP1-88877	H	WB, IHC
ATG14L	NBP2-36445	H, M, R	WB, ELISA, ICC
VPS34	NB110-87320	H, M, R +	WB, SW, ICC
PIK3R4 (VPS15)	NBP1-30463	H, M	WB, ICC, IP
	MAB6104	H	WB
Ambra1	NBP1-07124	H, M, R	WB, ELISA, ICC, IHC
Beclin 1	NB500-249	H, M, R	WB, SW, ICC, IHC, IP
	NB500-249	H, M, R	WB, SW, ICC, IHC, IP
Beclin 2	NB110-60984	H	WB, SW

Autophagy formation Antibodies

Antibody Target	Catalog #	Species	Applications
p62/ SQSTM1	NBP1-42821	H, M, R	WB, ICC
	MAB8028	H, M, R	WB, SW, ICC
	BAM8028	H, M, R	ICC
	IC8028G	H, M, R	ICC
GABARAP	NBP1-97416	M	IHC
ATG4B	NBP2-24709	H, M, R	WB, IHC
	MAB5279	H	WB, IP
ATG4A	AF4324	H	WB, IP
	MAB4324	H, M	WB, ICC, IP
ATG7	NBP1-95872	H, M, R	WB, ICC
	MAB6608	H, M	WB, SW, ICC, IHC
ATG3	AF5450	H, M, R	WB, ICC
ATG5	NB110-53818	H, M, R +	WB, SW, ICC, IHC, IP
	MAB5294	H, M, R	WB, SW, IHC
ATG12	NBP2-15501	H, M, R	WB, ICC, IHC
	MAB6807	H, M	WB, ICC
ATG16L1	NB110-60928	H, M, R +	WB, EM, IHC
ATG10	AF5464	H	WB

LC3 Antibodies

Target	Catalog #	Species	Applications
LC3	NB100-2331	H, M, R +	WB, SW, FC, ICC, IHC, IP
	NBP1-19167	H, M, R +	WB, SW, FC, ICC, IHC
	NBP1-78964	H, M, R +	WB, ICC, IHC
	NBP2-24392	H, M, R +	WB, IHC
LC3B	NB100-2220	H, M, R +	WB, SW, ICC, IHC, IP
	NB600-1384	H, M, R +	WB, SW, EM, FC, ICC, IHC
LC3C	NBP2-36664	H	WB, ICC, IHC
	NB110-74806	H	WB, IHC
LC3 Antibody Pack	NB910-40435	H, M	WB, IHC

Autolysosome Fusion Antibodies

Target	Catalog #	Species	Applications
LAMP-1	NB120-19294	H, M, R	WB, ICC, IHC
Rab7a	NBP1-05048	H, M, R +	WB, ICC
UVRAG	NBP2-24482	H, M, R +	WB
Rubicon	NBP1-30461	H	WB, IP

Autophagy Detection Reagent

Target	Catalog #	Applications
DAPGreen	D676	Autophagosome Detection
DAPGreen	D675	Autolysosome Detection

Enhancing Our 100% Guarantee



Genetic Strategy Validation



Orthogonal Validation



Independent Antibody Validation



Expression of Tagged Proteins Validation



Biological Strategies Validation

	Machines available			Fluorescent property	Volume/ the number of usable assays	Existing methods	Application
	Fluorescent Microscope	Flow cytometer	Microplate reader				
DAPGreen	○	○	○	Ex. 425-475 Em. 500-560 * For confocal microscope, the sample can be excited at 488nm	5 nmol x 1 / 35 mm dish x 25 (when used with max. concentration)	LC3-GFP MDC Cyto-ID etc.	phagophore ~Autophagosome formation
DALGreen	○	○	×	Ex. 350-450 Em. 500-560 * For confocal microscope, the sample can be excited at 488nm	20 nmol x 1 / 35 mm dish x 10 (when used with max. concentration)	LC3-GFP-RFP etc.	Auto lysosome