

“

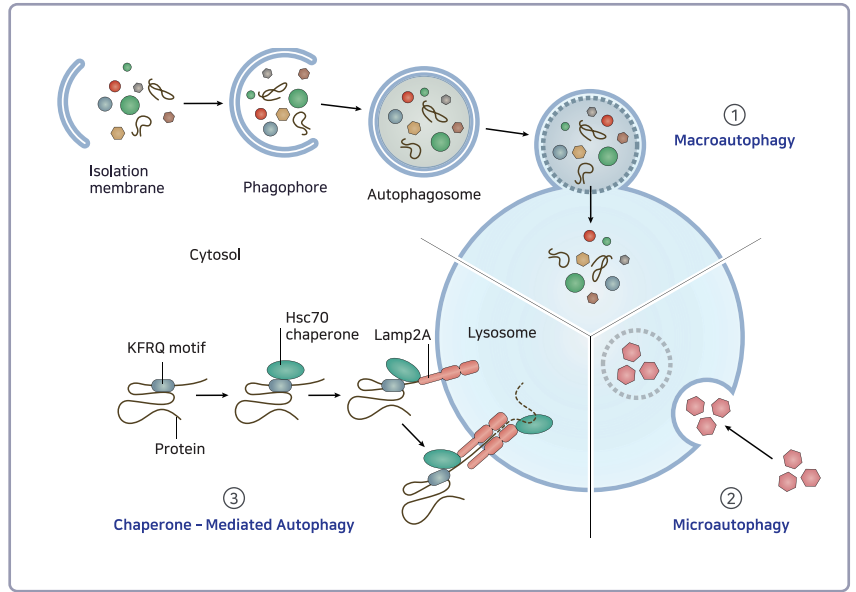
Autophagy

Mechanism marker

Antibody를

NOVUS에서 만나보세요

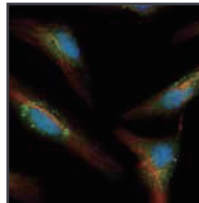
Three main types of autophagy



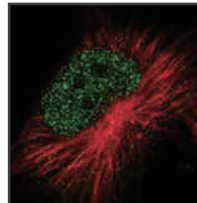
01 Macroautophagy

Macroautophagy는 손상되거나 불필요한 organelle을 분해함으로써 세포 내 환경을 유지하는

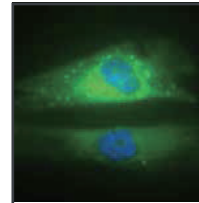
autophagy mechanism중 하나 단백질 복합체나 소기관들이 들어있는 이중막의 autophagosome이 lysosome 과 fusion되며 분해됨.



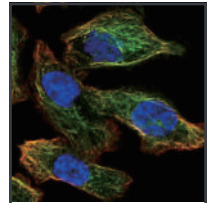
LC3, NBP1-19167
ICC, HeLa cells
(Novus)



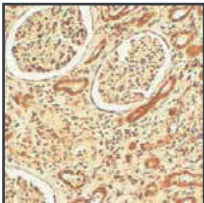
ATG2B, NBP1-90732
ICC, U-251MG cells
(Novus)



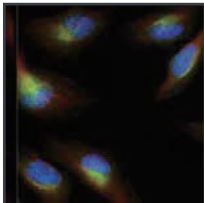
p62/SQSTM1,
NBP1-48320
ICC, HeLa cells
(Novus)



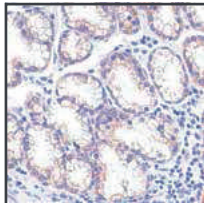
Tau, NB100-82242
ICC, HeLa cells
(Novus)



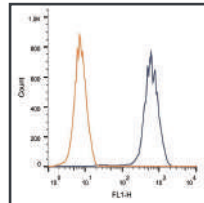
VPS41, NB100-2425
IHC, human kidney
(Novus)



Endothelial Lipase,
NB400-111
ICC, HeLa cells
(Novus)



TSG101 (4A10),
NB200-112
IHC, colon carcinoma
(Novus)



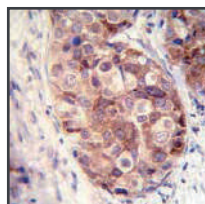
LAMP2, NBP2-22217
Flow, HEK-293 cells
(Novus)

02 Microautophagy

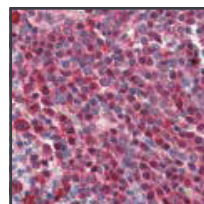
불필요하거나 기능을 하지 못하는 organelle이 세포질에서 lysosome에 직접적으로 함입되어 분해됨

03 Chaperone-Mediated Autophagy

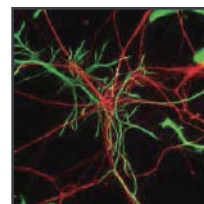
Autophagosome 형성 없이 샤프론에 의해 세포질 단백질의 분해가 일어나는 autophagy mechanism 중 하나



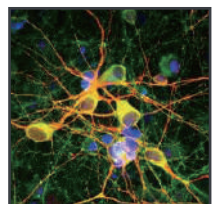
Hsp90A, NB120-2928
IHC, breast carcinoma
(Novus)



Hsc70/ Hsp73,
NBP1-97868
IHC, human spleen
(Novus)



GFAP, NB300-141
ICC, rat neurons
(Novus)



Tau, NBP2-25162
ICC/IF,
Mouse cortical neuron-glia
(Novus)

Order information

Macroautophagy

	Target	Catalog #	Species
LC3	LC3	NB100-2331	H, M, R +
		NBP1-19167	H, M, R +
		NBP1-78964	H, M, R +
		NBP2-24394	H, R, Bv
	LC3B	NB100-2220	H, M, R +
		NB600-1384	H, M, R +
	LC3C	NBP3-03280	H, M, R
		NBP2-57604	H
LC3 Antibody Pack	NB910-40435	H, M	
ATG2	ATG2A	NBP1-83009	H
		NBP1-57631	H
	ATG2B	NBP1-90732	H
		NB100-2220	H, M, R +
p62	p62/SQSTM1	NBP1-48320	H, M, R +
		NBP2-92995	H
		NBP1-42821	H, M, R
		NBP1-49956	H, M
		NBP2-43663	H, M
		NBP1-42822	H, M, R
		NBP1-49954	H
		NBP1-49955	H
		NBP2-56317	H, M, R
		NBP2-60272	H
NBP2-29650	H, Pm		
ATG4	ATG4A	NBP1-89044	H, M, R
		NBP2-56465	H, M
		NBP2-42518	H
	ATG4B	NBP2-24709	H, M, R
		NBP3-16538	H, R, R
		NBP2-41307	H, M, R
		NBP2-57210	H, M, R
		NBP3-10649	H
		NBP3-10327	H
		NBP3-21750	H, M, R
	ATG4C	NBP1-89043	H, M, R
		NBP2-81954	H, M, R
	ATG4D	NBP2-41308	H, M, R
		NBP2-92681	H, M, R
		NBP1-33488	H, M
		NBP2-49525	H
NBP1-36939		H	

Microautophagy

	Target	Catalog #	Species
VPS41	VPS41	NBP1-81639	H, M, R
		NBP1-81640	H, M
		NB100-2425	H
Endothelial Lipase	Endothelial Lipase	NB400-118	H, M(-)
		NB400-111	H, M(-), Pm
		NBP2-02396	H
		NBP1-45541	H, M, R +
		NBP1-84898	H
TSG101	TSG101	NBP1-05031	H
		NB200-112	H, M, R +
		NBP1-80659	H, M, R
		NBP2-77452	H, M, R
LAMP-2	LAMP-2	NBP1-80659	H, M, R
		NBP2-22217	H, M, R(-)
		NB300-591	H, M, R
		NBP1-97499	H, M, R +
		NBP3-15282	H, M, R
		NBP3-19551	H
NBP3-19884	H		
NBP3-21250	H		

Chaperone-Mediated Autophagy

	Target	Catalog #	Species
Substrates	Aldolase B	NBP2-15345	H, M, R
	Fos	NBP2-50037	H, M, R
	Eps8	NBP2-27300	H
	Pax2	NBP2-33496	H, M, R
		NBP2-57700	H, M, R
	MEF2D	NBP2-17261	H, M, R +
	RCAN1	NBP1-46852	H, M
	a-synuclein	NBP2-15365	H, M, R +
	Tau	NB100-82242	H, M, R
	Ubiquitin	NB300-130	H, M, R +
Chaperones	Hsp70	NBP1-77455	H, M, R +
	Hsp90 alpha	NBP1-77682	H, M
	Hsp90 beta	NBP1-77561	H, M, R
Receptors	LAMP2A	NBP2-22217	H, M, R(-)
Regulators	GFAP	NB300-141	H, M, R +
	EF1 alpha	NBP1-55245	H