

Scalable, flexible한 연구를 위한 Microfluidic Chip

실험에 따라 다양한 ECM 사용가능

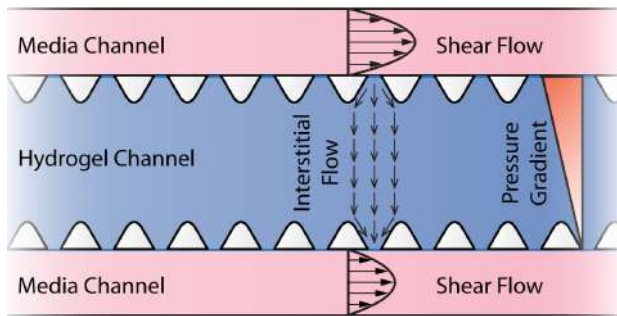
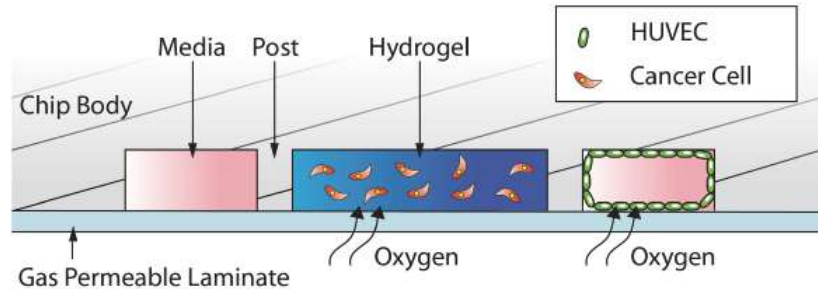
- Collagen or Fibrinogen
- Matrigel or other hydrogel etc.

Gas Permeable

- Hypoxia 실험도 가능

서로 다른 Cell 타입의 co-culture

- Cell-Cell interaction
- Cell-Cell communication



Control of Flow & Chemical Gradients

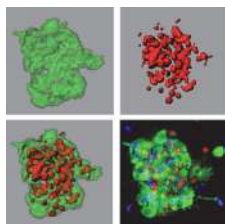
- Chemical gradients
- Interstitial flow 조절 가능

빠르고 쉬운 Media exchange

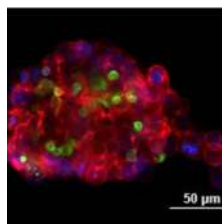
다양한 현미경으로 관찰 가능

- Phase contrast
- Epifluorescence
- 2-photon & confocal microscopy

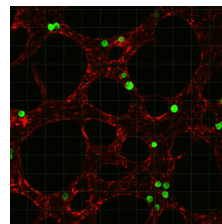
Run simple assays or create complex biological models.



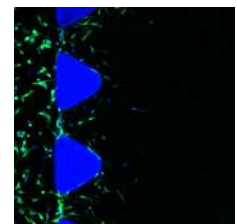
Immune Cell
Mediated Killing



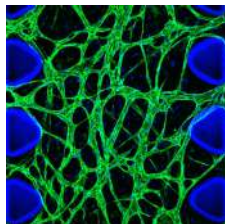
Immune
Checkpoint
Modulation



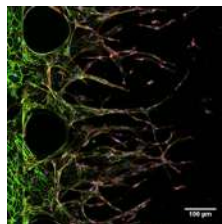
Extravasation



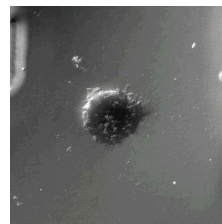
Cell Invasion



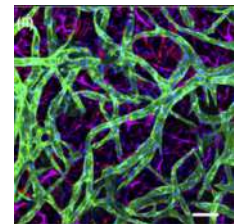
Vasculogenesis



Angiogenesis



Spheroid Dispersion



Blood-Brain Barrier Model



Publication
보러 가기



idenTx

for 최대 직경 **250 μm** 의 cell 또는 aggregate



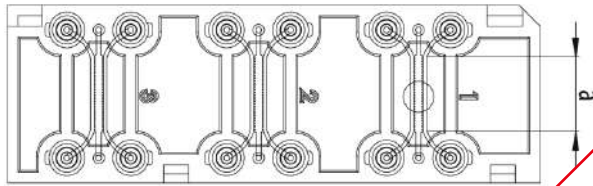
idenTx 3 Chip



idenTx 9 Chip

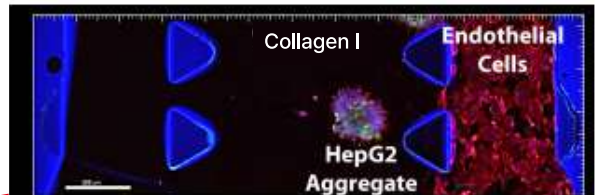
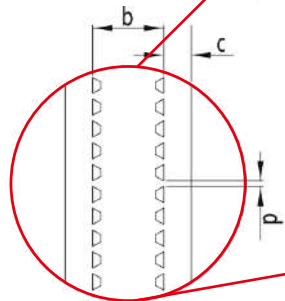


idenTx 40 Chip



Dimensions:

- a: Length of channels
- b: Width of gel channel
- c: Width of media channels
- d: Gap between posts
- Height of channels



organiX

for 최대 직경 **2 mm** 의 tissue biopsies, organoid 또는 aggregate



organiX Plate



organiX Insert

