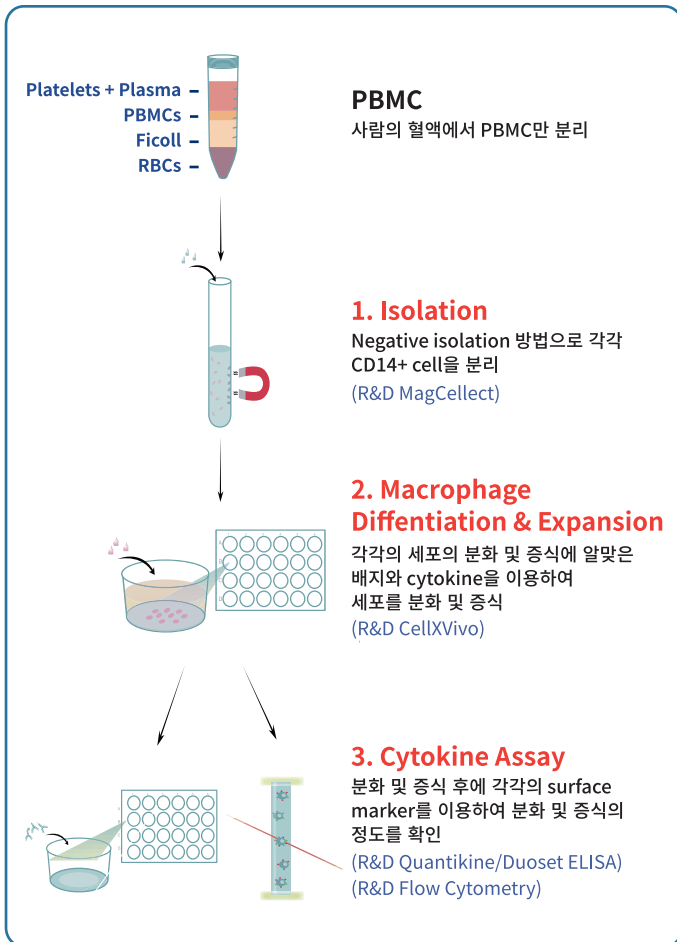


Macrophage Research

1. Isolation

2. Differentiation

3. Identify & Characterization



1. Isolation

MagCelect™ Human CD14+ Cell Isolation Kit	# MAGH105
Kit Contents	
Biotinylated Anti-Human CD14 Monoclonal Antibody (clone 134620)	
Streptavidin Ferrofluid	
10X Buffer	

2. Differentiation

Human M1 Macrophage Differentiation Kit	# CDK012
Human M2 Macrophage Differentiation Kit	# CDK013

- High Quality R&D Systems Cytokine 포함
- 추가 장비 필요없이 kit 하나면 OK

3. Identify & Characterization

SUGGESTED REAGENTS FOR FLOW CYTOMETRY

CATALOG #	DESCRIPTION
FAB382F	Human CD14 Fluorescein-conjugated Antibody (Clone 134620), Mouse IgG ₁
IC002F	Mouse IgG ₁ Fluorescein Isotype Control (Clone 11711), Mouse IgG ₁
FAB140P	Human B7-1/CD80 PE-conjugated Antibody (Clone 37711), Mouse IgG ₁
IC002P	Mouse IgG ₁ PE-conjugated Isotype Control (Clone 11711), Mouse IgG ₁
FAB1607C	Human CD163 PerCP-conjugated Antibody (Clone 215927), Mouse IgG ₁
IC002C	Mouse IgG ₁ PerCP Isotype Control (Clone 11711), Mouse IgG ₁
FAB25342A	Human MMR/CD206 APC-conjugated Antibody (Clone 685641), Mouse IgG _{2A}
IC003A	Mouse IgG _{2A} APC-conjugated Isotype Control (Clone 20102), Mouse IgG _{2A}

SUGGESTED REAGENTS FOR ELISA

CATALOG #	DESCRIPTION
HS120	Human IL-12 p70 Quantikine® HS ELISA Kit
D1000B	Human IL-10 p70 Quantikine® ELISA Kit

4. Related Products

Growth factor for Macrophage

Recombinant Human GM-CSF	# 215-GM
Recombinant Human M-CSF	# 216-MC

(TEL) 02-881-5432
(FAX) 02-881-5454

techserv@woongbee.com
woongbee@woongbee.com

http://www.woongbee.com/

R&D SYSTEMS™
a biotechnne brand

웅비메디텍
02.881.5432

AVATAR™

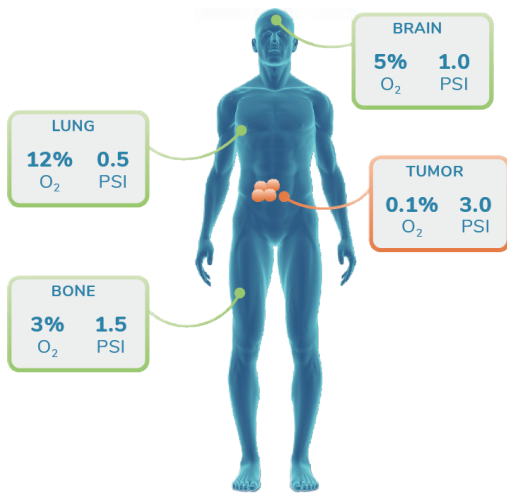
- Monocyte의 Viability Up!
- DC or Macrophage Differentiation & Expansion efficiency Up!

◆ Related Product

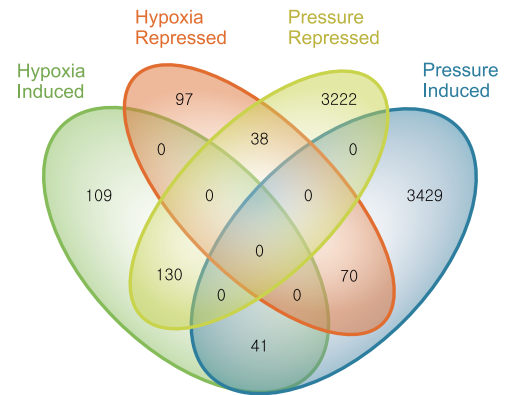
AVATAR™ Cell Culture System

산소와 압력(psi) 조절 / in Vivo와 가장 유사한 환경

- Immune cell Expansion control
- Immune cell Differentiation control
- High transfection efficiency
- Improve your primary cell culture



인체 내 각 기관마다 압력 및 산소 조건이 다릅니다.
일반 incubator와 비교할 수 없는 culture 환경을
제공합니다.



Venn diagram showing the number of induced and repressed transcripts in each RNA-seq transcriptome produced in response to iPSCs exposed to hypoxia, pressure, or both.

압력 및 산소조건에 의해 달라지는 gene expression
양상을 확인하세요. Cell에 맞는 Culture 환경으로
올바른 data를 얻으실 수 있습니다.



(TEL) 02-881-5432
(FAX) 02-881-5454



techserv@woongbee.com
woongbee@woongbee.com