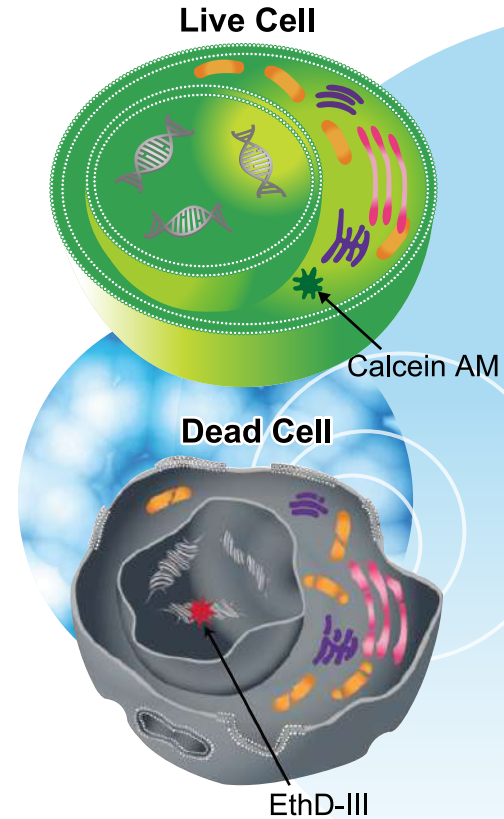


# Cell-Killing Activity

## EarlyTox™ Live/Dead Assay Kit

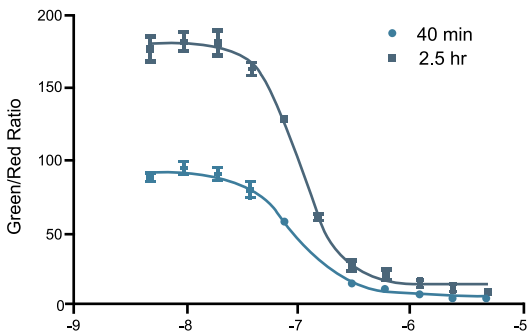
- **High-Quality data**
  - Live/dead ratio graph, Image of population
- **High Sensitivity**
  - Higher affinity dye to DNA → 70% brighter
- **Simple workflow**
  - No wash, one step
- **Reasonable Price**
  - **MD 48,500원** / plate vs. **경쟁사 63,500원** / plate



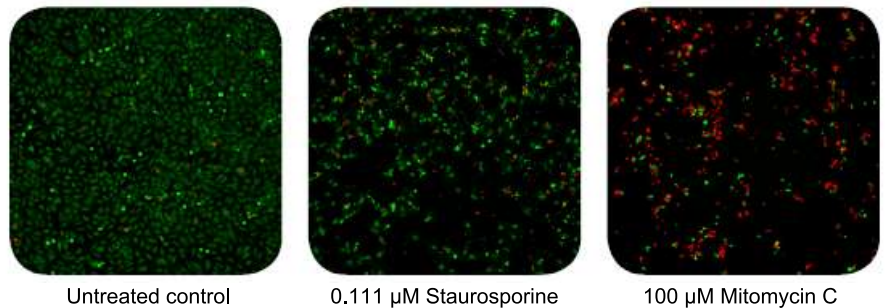
### Order information

Cat.#	Size
#R8340	2 plates
#R8341	10 plates

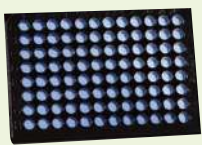
### A) Live/Dead Cell Ratio



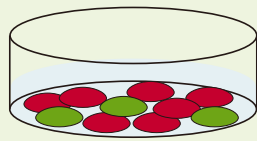
### B) Live/Dead Cell Image



## Procedure



Cell preparation

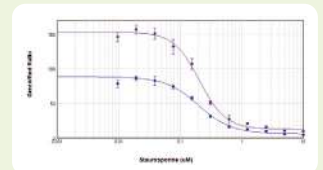


Reagent addition & incubation

30 min.



Fluorescence measurement



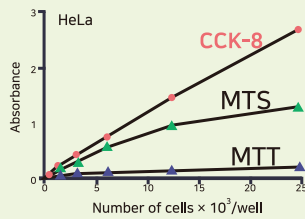
Data analysis

# Cell Viability Assay

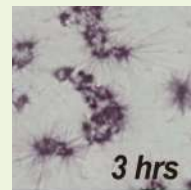
## CCK-8

- MTT, XTT, MTS, WST-1 대비 2~3배 높은 감도
- 24시간 incubation에도 세포가 죽지 않는 무독성
- Harvest, washing, solubilization 과정 없는 simple step

### Highest Sensitivity



### No Toxicity to Cells



## EarlyTox™ Live Cell Assay Kit

- 가장 간단한 live cell population 분석 kit
- Calcein-AM이 marker
- Calcein-AM의 낮은 세포 독성으로 long-term cell 분석 가능

# Cell Cytotoxicity Assay

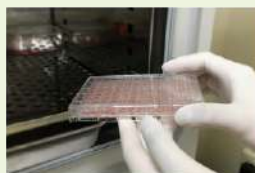
## LDH Assay Kit

- Damaged cell에서 분비 되는 LDH 측정 → cytotoxicity 분석
- Attached & suspended cells 모두 분석 가능
- Stability 높은 working solution (0-5 °C for 6 months)

### Procedure



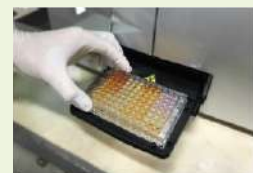
Add working solution



Incubation for 30 min.



Add stop solution



Reading at 490 nm