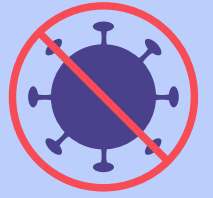
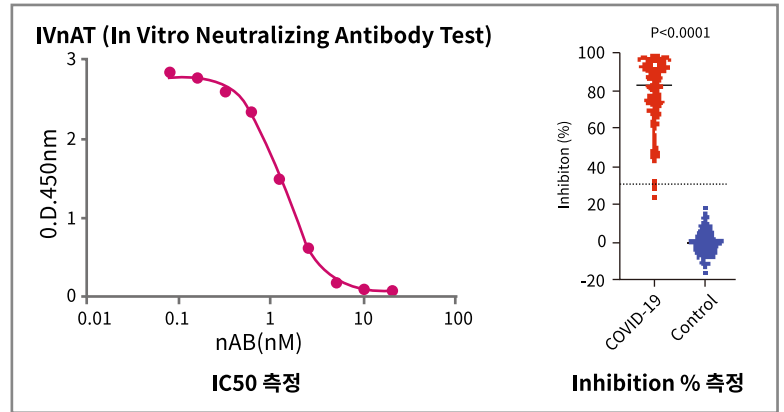
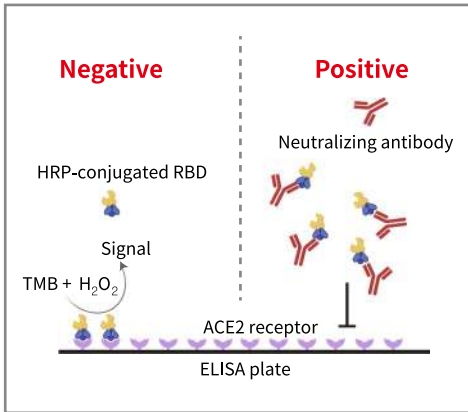


# Challenge COVID-19



## 중화 항체 중화력 검사 Kits

\* Anti-SARS-CoV-2 IVnAT Kit



- Live Virus X
- Cell Work 불필요
- 쉬운 실험 방법

- 일반적인 Lab 환경에서 실험 가능
- 빠른 결과 도출 (2~3일 -> 1시간)
- High-throughput Assay



## 항체 검사 Kits

\* Anti-SARS-CoV-2 Total Ab ELISA Kit

\*\* Anti-SARS-CoV-2 IgM/IgG Kit (신속검사)

### \* Antibody Isotype에 관계없이 항체의 유무 확인

- Antibody Isotype 모두 검출
- Ready-to-use Reagents

- Sample의 Pre-dilution 불필요
- 빠른 결과 확인

### \*\* 신속검사로 별도의 장비 없이 바로 항체의 유무 확인

- 혈액, 혈장, 혈청 모두 가능
- Single Test
- 간단한 시험 방법

- Lateral Flow method
- 결과까지 10~15분
- 별도의 측정 장비 불필요

# COVID-19 Research with R&D Systems

면역학 제품의 명가, R&D Systems!



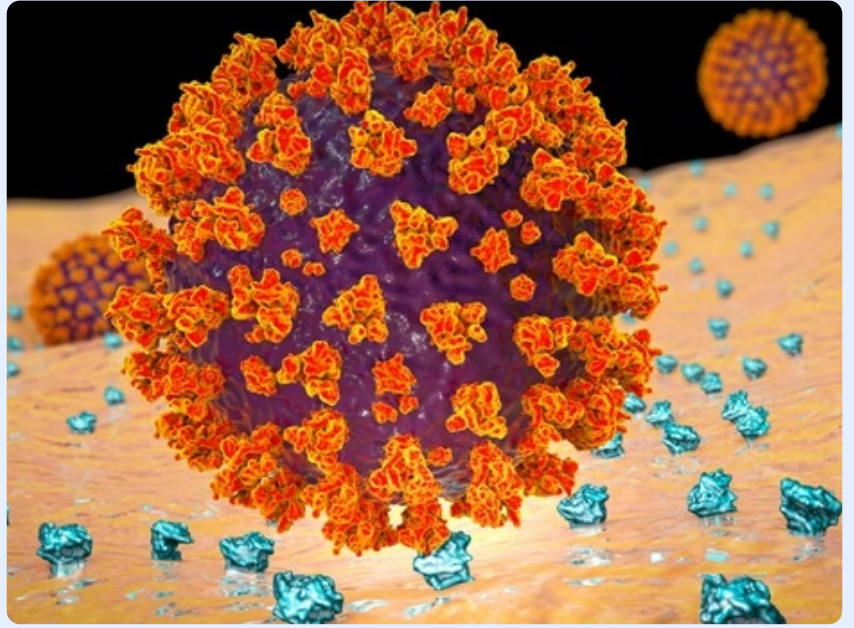
## SARS-CoV-2 High-Quality Antigens

- S1-RBD
- Active Trimer
- Spike Protein
- N Protein



## High-Quality Proteins & Antibodies

- ACE2 Protein from R&D, Novus
- ACE2 Duoset
- ACE2 Antibodies

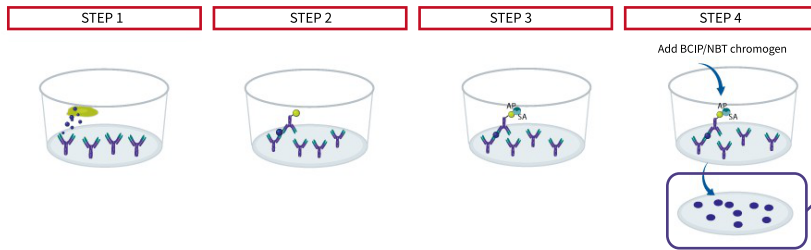


## T-cell Response to SARS-CoV-2

IFN-gamma **ELISpot Assay** (human: EL285, mouse: EL485)

항원 자극 후 ELISpot으로 IFN-gamma 분비 확인

Single Antytle ELISpot Assay Principle



**항원 자극 확인!**



## T-cell Antibodies for Characterization

	CD3	CD4	CD8	CD45R	CD45RO	CD62L	CCR7	T-bet	IFN-a	TNF-a	GATA-3	IL-4
Human	○	○	○	○	○	○	○	○	○	○	○	○
Mouse	○	○	○	○		○	○		○	○	○	○



웅·비·나  
웅비 Webinar

웅·테·나  
웅비 Table Seminar

