

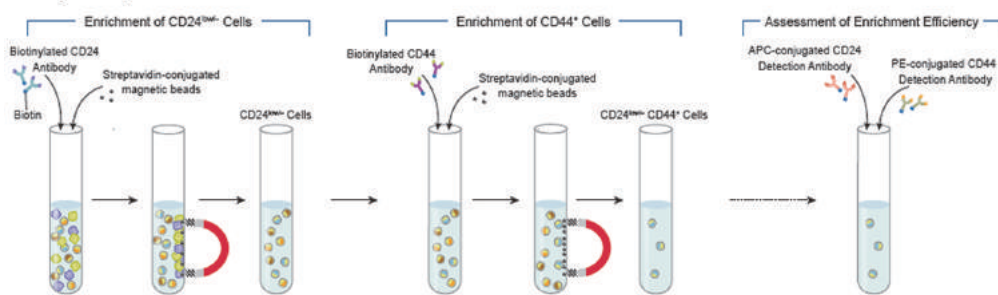


# Breast Cancer Stem Cell Markers

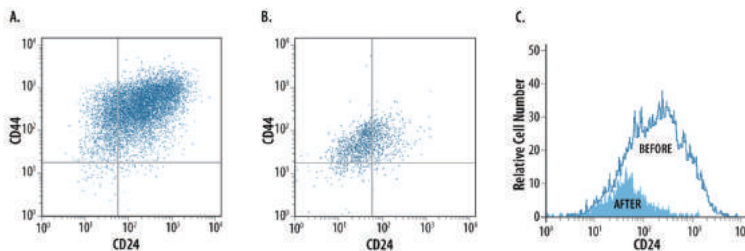
## MagCelect Human CD24-CD44+Breast Cancer Stem Cell Isolation Kit

- ▶ Features
  - no cell damage induced by beads or ferrofluids
  - Fast-target cells can be enriched in approximately 1 hour
  - Flexible-compatible with sev
  - #MAGH!!!
- ▶ Order information.

### Assay Principle



Analysis of CD24<sup>low</sup>CD44<sup>+</sup> cells using the MagCelect Human CD24<sup>low</sup>CD44<sup>+</sup> Breast cancer stem cell isolation Kit. Undesired CD24<sup>+</sup> cells are bound by a biotinylated anti-human CD24 antibody and captured by streptavidin-conjugated magnetic particles. These cells are then isolated using a MagCelect Magnet (Catalog # MAG997, or equivalent), and an enriched CD24<sup>low</sup> population is aspirated from the sample solution. CD44<sup>+</sup> cells are subsequently labeled with a biotinylated anti-human CD44 antibody and magnetically tagged with streptavidin-conjugated magnetic particles. CD24<sup>low</sup>CD44<sup>+</sup> cells are captured by applying the MagCelect Magnet, or any compatible system, and undesired cells are aspirated from solution.



### Analysis of MagCelect kit by Flow Cytometry

- A: Before enrichment;
- B: After enrichment;
- C: Enrichment profile

### ▶ Breast Cancer Cell Markers

ALDH1A1	BMI-1	Connexin43 / GJA1	CXCR1 / IL-8 RA	
CD24	CXCR4	DLL4	IL-1 alpha / IL-1 F1	IL-6 R alpha
CD44	GLI-1	PON1	ErbB2/Her2	EpCAM/TROP1
CD133	GLI-2	PTEN	Integrin alpha 6 / CD49f	