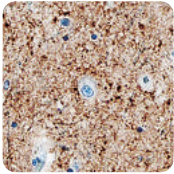




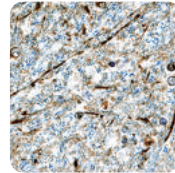
Synuclein-alpha Products for Parkinson's Disease Research

Synuclein-alpha in human Brain



Mouse Anti-Human/Mouse/Rat Synuclein alpha Monoclonal Antibody (Catalog # MAB13381)
Tissue was stained using the

Anti-Mouse HRP-DAB Cell & Tissue Staining Kit (brown; Catalog # CTS002) and counterstained with hematoxylin (blue).



Goat Anti-Human Synuclein alpha Antigen Affinity-purified Polyclonal Antibody (Catalog # AF1338)

Tissue was stained using the Anti-Goat HRP-DAB Cell & Tissue Staining Kit (brown; Catalog # CTS008) and counterstained with hematoxylin (blue).

▶ Related Products for Synuclein-alpha

Cat.#	Name
Primary Antibodies	
AF1338	Human Synuclein-alpha Ab
BAF1338	Human Synuclein-alpha Biotinylated Ab
MAB13381	Human/Mouse/Rat Synuclein-alpha Ab
MAB1338	Human Synuclein-alpha Ab
PPS091	Phospho-Synuclein-alpha(5129)Ab
Proteins and Enzymes	
SP-480	Recombinant Human His6-Synuclein-alpha Protein, CF
Small Molecules	
4524	EGCG
4720	Entacapone
5131	NAB 2
ELISAs	
LXSAHM	Human Magnetic Luminex Screening Assay
Luminex Assays	
DY1338-05	Human Synuclein-alpha DuoSet ELISA

