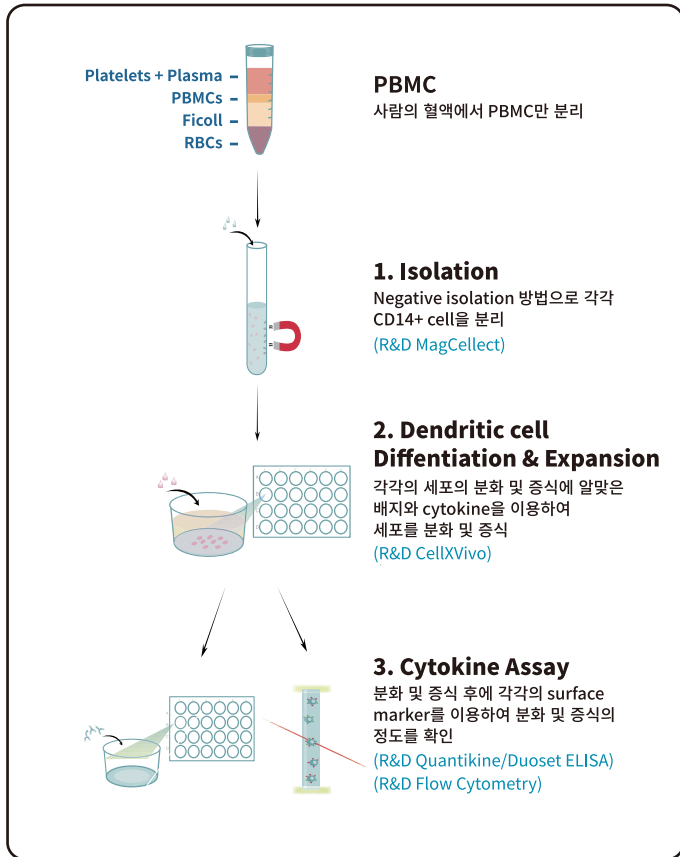


Dendritic Cell Research

1. Isolation

2. Differentiation

3. Identify & Characterization



1. Isolation Kit

| | |
|---|-----------|
| MagCellct™ Human CD14 ⁺ Cell Isolation Kit | # MAGH105 |
| Kit Contents | |
| Biotinylated Anti-Human CD14 Monoclonal Antibody (clone 134620) | |
| Streptavidin Ferrofluid | |
| 10X Buffer | |

2. Differentiation Kit

| | |
|---|------------------|
| CellXVivo Human Monocyte-derived DC Differentiation Kit | Catalog # CDK004 |
| Kit Contents | |
| Serum-Free Dendritic Cell Base Media (단품 구매 가능 #CCM003) | |
| Recombinant Human IL-4 | |
| Recombinant Human GM-CSF | |
| Recombinant Human TNF-alpha | |
| Reconstitution Buffer 2 | |

| | |
|--|------------------|
| CellXVivo Mouse Dendritic Cell Differentiation Kit | Catalog # CDK008 |
| Kit Contents | |
| Mouse Dendritic Cell Base Media | |
| Recombinant Mouse IL-4 | |
| Recombinant Mouse GM-CSF | |
| Recombinant Human TNF-alpha | |
| Reconstitution Buffer 2 | |

■ High Quality R&D Systems Cytokine포함 ■ 추가 장비 필요없이 kit 하나면 OK

4. Related Products

Growth factor For Dendritic cell

| Target | Species | Cat # | GMP-grade Cat # |
|----------------------|---------|----------|-----------------|
| Flt-3 Ligand | Human | 308-FK | 308-GMP |
| | Human | 308-FKN | |
| | Mouse | 427-FL | |
| GM-CSF | Human | 215-GM | 215-GMP |
| | Human | 7954-GM | |
| | Mouse | 415-ML | |
| IL-4 | Human | 204-IL | |
| | Human | 6507-IL | |
| | Mouse | 404-ML | |
| M-CSF | Human | 216-MC | 216-GMP |
| | Human | 216-MCC | |
| | Mouse | 416-ML | |
| Thromboprotein | Human | 288-TP | |
| | Human | 288-TPN | |
| | Mouse | 488-TO | |
| TNF-alpha(aa 77-233) | Human | 210-TA | 210-GMP |
| TNF-alpha(aa 87-233) | Human | 8599-TA | |
| TNF-alpha(aa 80-235) | Mouse | 410-MT | |
| TNF-alpha(aa 84-235) | Mouse | 410-TRNC | |

3. Identify & Characterization Kit

Suggested kits For Flow Cytometry

| | |
|---|------------------|
| Human Myeloid Dendritic Cell Multi-Color Flow Kit | Catalog # FMC016 |
|---|------------------|

Suggested kits For ELISA

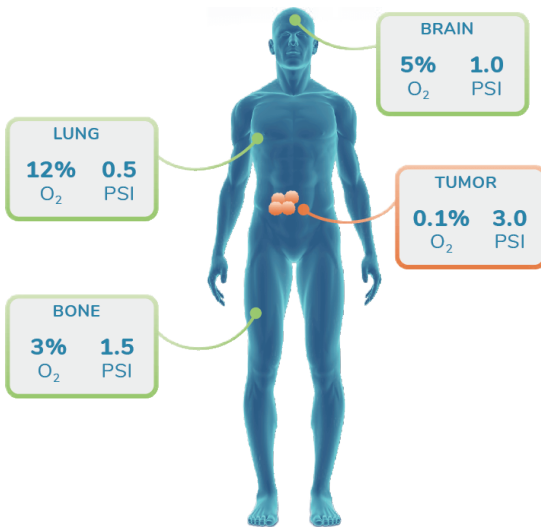
| Target | Species | Quantikine ELISA # | Quantikine HS ELISA # |
|-----------------|---------|--------------------|-----------------------|
| IFN-gamma | Human | DIF50 | |
| | Mouse | MIF00 | |
| IL-1beta/IL-1F2 | Human | DLB50 | HSLB00D |
| | Mouse | MLB00C | HSLB00C |
| IL-2 | Human | D2050 | |
| | Mouse | M2000 | HS600B |
| IL-6 | Human | D6050 | |
| | Mouse | M6000B | |
| IL-10 | Human | D1000B | HS100C |
| | Mouse | M1000B | |
| IL-12 p70 | Human | D1200 | HS120 |
| | Mouse | M1270 | |
| IL-12/IL-23 p40 | Human | DP400 | |
| | Mouse | M1240 / MP400 | |
| TNF alpha | Human | DTA00C | HSTA00D |
| | Mouse | MTA00B | |

AVATAR™ Cell Culture incubator

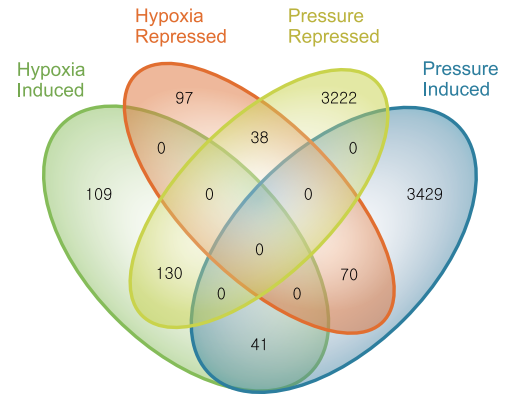
산소와 압력(psi) 조절 / in Vivo와 가장 유사한 환경

- Monocyte의 Viability Up!
- DC or Macrophage Differentiation & Expansion efficiency Up!

- Immune cell Expansion control
- Immune cell Differentiation control
- High transfection efficiency
- Improve your primary cell culture



인체 내 각 기관마다 압력 및 산소 조건이 다릅니다.
일반 incubator와 비교할 수 없는 culture 환경을
제공합니다.



Venn diagram showing the number of induced and repressed transcripts in each RNA-seq transcriptome produced in response to iPSCs exposed to hypoxia, pressure, or both.

압력 및 산소조건에 의해 달라지는 gene expression
양상을 확인하세요. Cell에 맞는 Culture 환경으로
올바른 data를 얻으실 수 있습니다.



(TEL) 02-881-5432
(FAX) 02-881-5454



techserv@woongbee.com
woongbee@woongbee.com