

ELISAs

# ELISpot Kits

## We Outperform the Competition

### Be Confident in the Data

Small, crisp spots allow for easier, more accurate quantitation and the largest dynamic range (number of detectable spots/well) on the market.

### Detect Low Frequency Responses

Our kits can measure responses with frequencies well below 1 in 100,000 cells—up to 20% more sensitive than the competition.

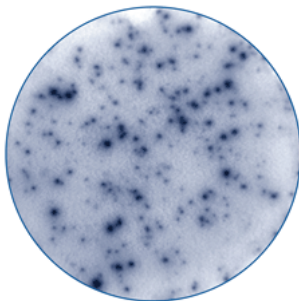
### Directly Compare Results—Even Years Later

We ensure lot-to-lot consistency by manufacturing multiple equivalent lots.

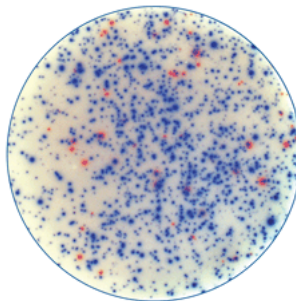
### Choose from Multiple Formats

We offer ready-to-use kits for chromogenic and fluorescent detection formats. Do-it-yourself development modules for single analytes are also available.

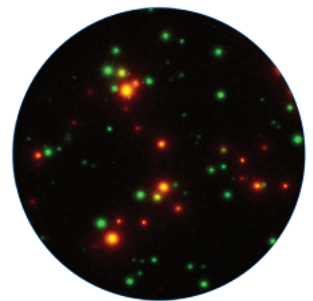
Single Analyte ELISpot



Dual-Color ELISpot



Dual-Color FluoroSpot



### Be Assured the Kit Worked

We are the only company that provides recombinant protein positive controls.

### Have Confidence with Bio-Techne as Your Partner

Our best-in-class technical support is ready to help with any questions you have about our products.

For research only. Not for use in diagnostic procedures.

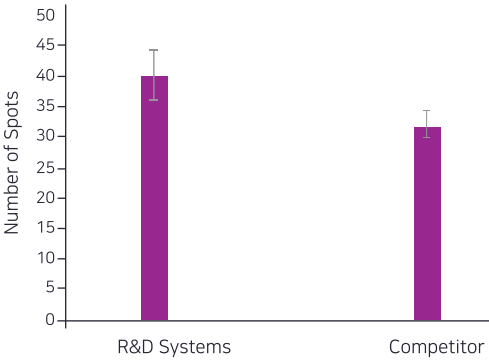


**WOONGBEE**  
**MeDiTech, Inc.**

02.881.5432

# Outperforming the Competition with Crisper and Brighter Spots

## Detection of IFN-γ-secreting Cells



R&D Systems ELISpot outperforms the leading competitor. Peripheral blood mononuclear cells (PBMCs) were stimulated with 0.5 µg/mL Cal or 0.05 µg/mL PMA. Following an overnight incubation, the number of IFN-γ-secreting PBMCs was determined using a Human IFN-γ ELISpot kit from either R&D Systems (Catalog # EL285;) or a leading competitor. Images were collected and spots were counted with a QuantiHub 4.1 ELISpot reader. Three wells from each microplate are shown. The R&D Systems ELISpot Kit detected more IFN-γ-secreting cells and produced significantly brighter and crisper spots for easier quantification.

## Recent Citations

Epidermal RelA specifically restricts contact allergen-induced inflammation and apoptosis in skin. Kumari, S. et al.(2014) J. Invest. Dermatol. 134:2541.

### Mouse IFN-γ ELISpot Kit (Catalog# EL485)

A targeted mutation within the feline leukemia virus (FeLV) envelope protein immunosuppressive domain to improve a canarypox virus-vectored FeLV vaccine. Schlecht-Louf, G. et al. (2014) J. Virol, 88:992

### Feline IL-10 ELISpot Development Module (Catalog SEL736)

Single analyte ELISpot Kit	H	M	C	R	P	Pm	B	F
IFN-γ ELISpot	✓	✓	✓	✓	✓	✓	✓	✓
IL-2 ELISpot	✓	✓	✓	✓		✓	✓	
IL-4 ELISpot	✓	✓	✓					
IL-5 ELISpot	✓	✓						
IL-6 ELISpot	✓	✓		✓				
IL-10 ELISpot	✓	✓	✓		✓			
IL-12/IL-23 p40 ELISpot	✓		✓					
IL-13 ELISpot	✓							
IL-17 ELISpot	✓	✓				✓		
IL-31 ELISpot	✓							
Latent TGF-β1 ELISpot	✓							
Granzyme B ELISpot	✓	✓						
CD4+/IFN-γ ELISpot		✓						
CD4+/Granzyme B ELISpot		✓						
CD4+/IL-4 ELISpot		✓						
CD8α+/IFN-γ ELISpot	✓							
TNF-α ELISpot		✓						

Dual-Color ELISpot Kit	H	M	C	Pm	F
IFN-γ/Granzyme B ELISpot	✓	✓			
IFN-γ/IL-2 ELISpot	✓	✓	✓	✓	✓
IFN-γ/IL-4 ELISpot	✓	✓			
IFN-γ/IL-5 ELISpot	✓	✓			
IFN-γ/IL-10 ELISpot	✓				
IFN-γ/IL-13 ELISpot	✓	✓			
IFN-γ/IL-17 ELISpot	✓	✓	✓	✓	
IL-2/IL-4 ELISpot	✓	✓			
IL-2/IL-10 ELISpot	✓	✓			
IL-4/IL-10 ELISpot		✓			
IL-4/IL-17 ELISpot	✓	✓			
IgG/IgM B Cell ELISpot	✓	✓			

H; Human, M; Mouse, C; Canine, R; Rat, P; Porcine, Pm; Primate, B; Bovine, F; Feline