

# Exo2D™ Exosome isolation kit

Exo2D™ provides stable RNA/DNA and protein analysis

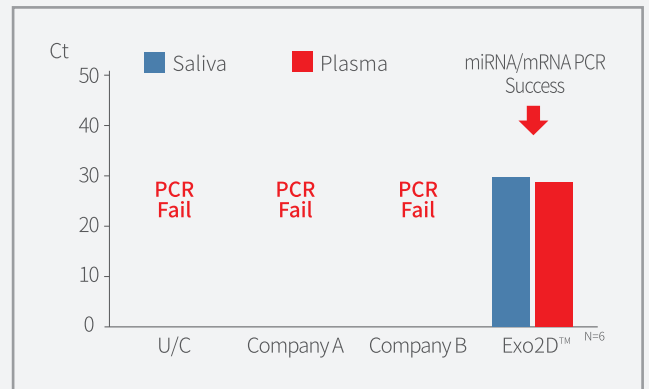


- ✓ High Yield
- ✓ 많은 샘플 처리 가능
- ✓ 특별한 장비 필요 없음
- ✓ Vesicle Morphology 유지
- ✓ 높은순도\_Low Protein contamination
- ✓ 간단 프로토콜-단 1시간 30분 내 실험 끝

- 샘플 pre-Clearing
- Exo2D reagent 준비
- 샘플 + Reagent Mixing



Applications	
1	Western blot
2	PCR
3	NGS
4	Proteomics
5	Exosome research
6	In vitro/vivo efficacy test



## Exosome isolation kits

Exo2D™			
no.	코드	품명	단위
1	EP-RU10	Exo2D - for RNA(designed to 50 ml urine, culture media)	10 ml
2	EP-RU20	Exo2D - for RNA(designed to 100 ml urine, culture media)	20 ml
3	EP-RU50	Exo2D - for RNA(designed to 250 ml urine, culture media)	50 ml
4	EP-PU25	Exo2D - for Protein(designed to 50 ml urine, culture media)	25 ml
5	EP-PU50	Exo2D - for Protein(designed to 100 ml urine, culture media)	50 ml
6	EP-PU125	Exo2D - for Protein(designed to 250 ml urine, culture media)	125 ml
7	EP-RP5	Exo2D - for RNA(designed to 25 ml plasma, serum)	5 ml
8	EP-RP10	Exo2D - for RNA(designed to 50 ml plasma, serum)	10 ml
9	EP-PP12.5	Exo2D - for Protein(designed to 25 ml plasma, serum)	12.5 ml
10	EP-PP25	Exo2D - for Protein(designed to 50 ml plasma, serum)	25 ml
11	EP-WR60	Exo2D - washing buffer X3 for RNA kit	60 ml
12	EP-WP60	Exo2D - washing buffer X3 for Protein kit	60 ml

\*for RNA/for Protein은 이후 process로 PCR이든 Western blot을 하시면 이에 맞춰 좀 더 특화되어 나온 제품이지만 어떤 키트를 사용하든, 분리된 exosome으로 원하시는 application 모두 활용 가능합니다.

# ExoCoPe™ ExoSome Analysis Device

ExoCoPe™ provides optimized Nanoparticle Tracking Analysis for exosome

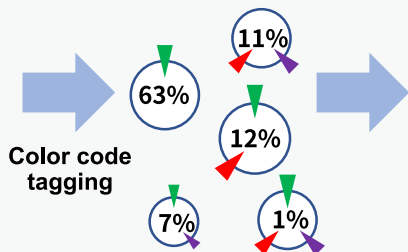
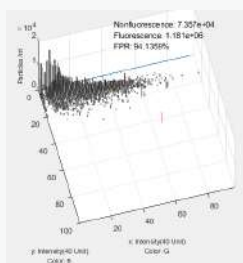
EXOCOPE™



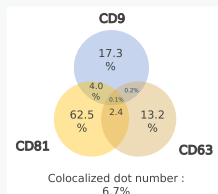
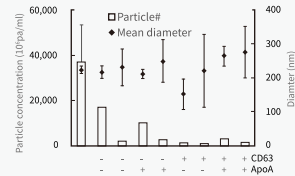
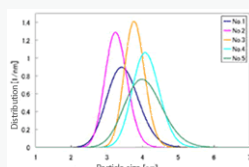
## 동시에 4-channel 까지 가능한 1st NTA



4-color recording &  
Simultaneous multicolor particle tracking  
analysis



Multi-dimensional particle properties (Size + 4-color intensity information)



4-dimensional individual particle color data

- 엑소좀 연구에 반드시 필요한 NTA
- NTA 따로, 형광을 위한 Flow Cytometry 따로, NO !!
- 동시에 두가지 타겟 발현 엑소좀 구분
- 개별 입자의 색별 밝기 구분 가능
- 사이즈 구분 가능

견적 및 데모 요청



EXOCOPE™ Quad

EXOCOPE™ Mono

	EXOCOPE™ Quad	EXOCOPE™ Mono
Laser	405, 488, 525 and 638 nm	525 nm
Output data table	Size, amount, scattered light brightness, 3-fluorescence brightness	Size, amount, scattered light brightness
Sub-volume scan	Motorized (50 position)	Motorized (50 position)
Optical filter	Excitation light cut-off filter	Optional
Image sensor	sCMOS	CCTV grade CMOS
Frame rate	20 - 30 fps	24 - 40 fps
Dimension	200 x 340 x 170 (mm)	
Target size range	20 - 500 nm for high refractive index particle (polystyrene, metal) 50 - 1000 nm for low refractive index particle (exosome, EV)	
Minimum sample volume	0.4 ml (typical), 0.2ml (extreme)	
Interface	USB 3.1 Gen 1	
OS	Windows 10 (64bit)	
Power	100 - 240V (45-63Hz)	