

“

Fluorokines™

for CAR-T, CAR-NK, ICP, SARS-CoV-2

Fluorokines™ ? Fluorescent-labeled recombinant protein 입니다.

01 Direct detection

- Specific한 target detection
- Secondary Ab 미사용으로 background 없는 결과

02 Conjugated to Alexa Fluor® Dyes

- 형광의 뛰어난 강도와 오랜 지속시간

03 Reduced Processing Time (One-step)

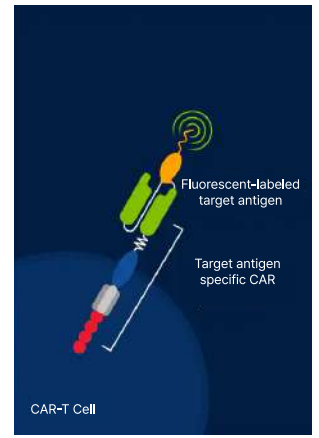
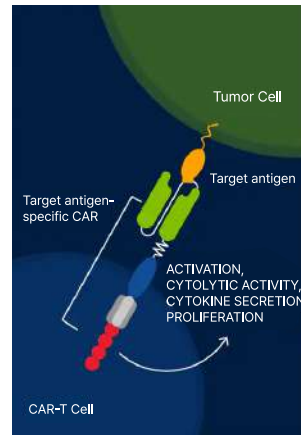
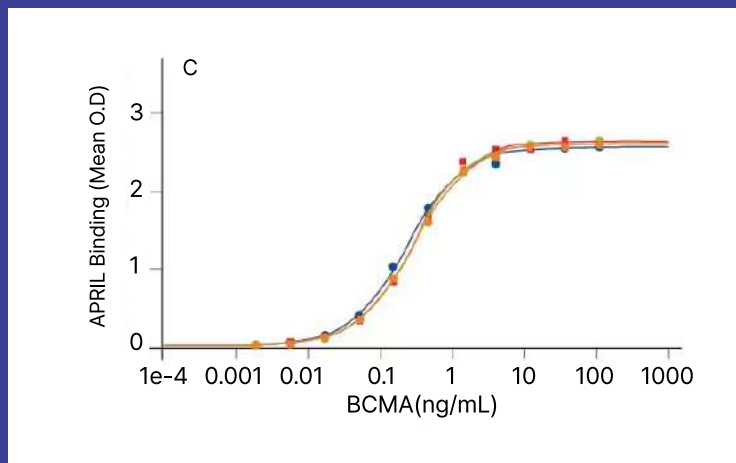
- 쉽고 빠르게 target 검출

04 High Levels of Bioactivity

- Retail protein과 동일한 높은 수준의 활성을

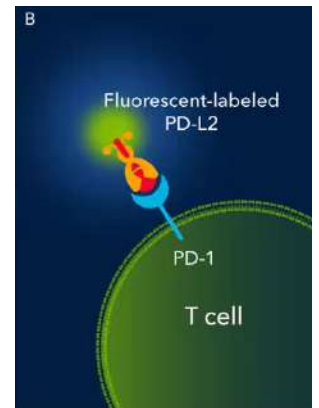
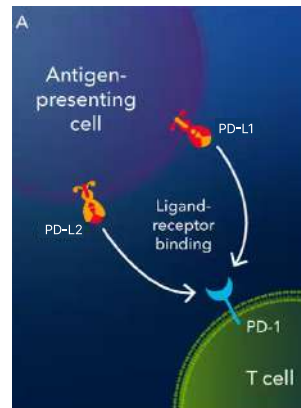
05 High lot-to-lot consistency

- Lot 간 높은 consistency



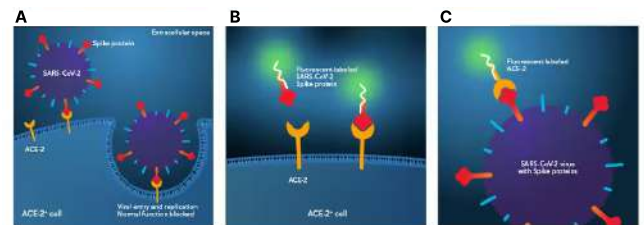
Fluorescent-labeled Proteins for CAR-T or CAR-NK Cell Detection

Flurokine은 CAR-T 또는 CAR-NK 세포에서 CAR 발현을 직접 평가하는데 사용할 수 있습니다.



Alexa Fluor®-labeled Immune Checkpoint Ligands

Flurokine을 사용하여 Immunotherapy를 위한 Immune Checkpoint Interactions을 발견할 수 있습니다.



Alexa Fluor®-labeled SARS-CoV-2 Spike Proteins

Fluorescent-labeled Spike proteins 또는 Fluorescent-labeled ACE-2 receptor는 SARS-CoV-2 binding cell을 식별할 수 있으며 면역 반응을 확인하는데 사용 가능합니다.

Fluorokines™ Fluorescent-Labeled Recombinant Proteins list

Fluorescent-labeled Proteins for CAR-T or CAR-NK Cell Detection

Protein	Fluorescent Label	Catalog #	Protein	Fluorescent Label	Catalog #
BCMA	Alexa Fluor® 488	AFG193	Fc gamma RIIA/CD32a (R167)	Alexa Fluor® 488	AFG1330
	Alexa Fluor® 647	AFR193		Alexa Fluor® 647	AFR1330
	Atto 488	ATJ193	Fc gamma RIIIA/CD16a	Alexa Fluor® 647	AFR4325
CD19	Atto 647N	ATM193	Glypican 3	Alexa Fluor® 488	AFG2119
	Alexa Fluor® 488	AFG9269		Alexa Fluor® 647	AFR2119
	Alexa Fluor® 647	AFR9269		Alexa Fluor® 488	AFG7147
CD30/TNFRSF8	Atto 488	ATJ9269	IL-13 R alpha2	Alexa Fluor® 488	AFG10332
	Atto 647N	ATM9269		Alexa Fluor® 647	AFR147
	Alexa Fluor® 488	AFG1155		Alexa Fluor® 488	AFG3265
CD40/TNFRSF5	Alexa Fluor® 647	AFR1155	Mesothelin	Alexa Fluor® 647	AFR3265
	Alexa Fluor® 488	AFG1493		Alexa Fluor® 488	AFR3265
	Alexa Fluor® 647	AFR1493		Alexa Fluor® 488	AFG10332
CD300e	Alexa Fluor® 647	AFR10479	MUC-1	Alexa Fluor® 647	AFR10332
	Alexa Fluor® 488	AFG10479		Alexa Fluor® 488	AFG3388
	Alexa Fluor® 647	AFR10479		Alexa Fluor® 647	AFR3388
DLL3	Alexa Fluor® 488	AFG9749	OX40	Alexa Fluor® 488	AFG1086
	Alexa Fluor® 647	AFR9749		Alexa Fluor® 647	AFR1086
	Alexa Fluor® 488	AFG344		Alexa Fluor® 647	AFR1086
EGFR	Alexa Fluor® 488	AFR344	PD-1	Alexa Fluor® 488	AFG1968
	Alexa Fluor® 647	AFR344		Alexa Fluor® 488	AFG1968
	Alexa Fluor® 488	AFG972		Alexa Fluor® 647	AFR1968
EMMPRN/CD147	Alexa Fluor® 488	AFG972	Siglec-2 / CD22	Alexa Fluor® 488	AFG1968
	Alexa Fluor® 647	AFR972		Atto 488	ATJ1968
	Alexa Fluor® 488	AFG960		Atto 647N	ATM1968
EPCAM/TROP1	Alexa Fluor® 647	AFR960	Siglec-3 / CD33	Alexa Fluor® 488	AFG1137
	Alexa Fluor® 488	AFG960		Alexa Fluor® 647	AFR1137
	Alexa Fluor® 647	AFR1129		Atto 488	ATJ1137
FIBB2/Her2	Alexa Fluor® 488	AFG1129	TSLPR	Atto 647N	ATM1137
	Alexa Fluor® 647	AFR1129		Alexa Fluor® 488	AFG981
	Alexa Fluor® 488	AFG357		Alexa Fluor® 647	AFR981
VEGFR2/KDR	Alexa Fluor® 647	AFR357			

Alexa Fluor®-labeled Immune Checkpoint Ligands

Protein	Fluorescent Label	Catalog #	Protein	Fluorescent Label	Catalog #
B7-1/CD80	Alexa Fluor® 488	AFG9050	CD155/PVR	Alexa Fluor® 488	AFG2530
	Alexa Fluor® 647	AFR9050		Alexa Fluor® 647	AFR2530
	Alexa Fluor® 488	AFG10133		Alexa Fluor® 488	AFG6987
B7-2/CD86	Alexa Fluor® 647	AFR10133	GITR Ligand/TNFSF18	Alexa Fluor® 647	AFR6987
	Alexa Fluor® 488	AFG7625		Alexa Fluor® 488	AFG1177
	Alexa Fluor® 647	AFR7625		Alexa Fluor® 647	AFR1177
B7-H2	Alexa Fluor® 488	AFG165	HVEM/TNFRSF14	Alexa Fluor® 647	AFR1177
	Alexa Fluor® 647	AFR165		Alexa Fluor® 647	AFR1177
	Alexa Fluor® 488	AFG1027		Alexa Fluor® 647	AFR110
B7-H3	Alexa Fluor® 647	AFR1027	IgG1	Alexa Fluor® 488	AFG9049
	Alexa Fluor® 488	AFG1027		Alexa Fluor® 647	AFR9049
	Alexa Fluor® 647	AFR1027		Alexa Fluor® 488	AFG1224
			PD-L2/B7-DC	Alexa Fluor® 647	AFR1224

Alexa Fluor®-labeled SARS-CoV-2 Spike Proteins

Variant	Label	Catalog #	Variant	Label	Catalog #
SARS-CoV-2	Alexa Fluor® 488	AFG10561	Omicron	Alexa Fluor® 488	AFG11060
	Alexa Fluor® 647	AFR10561		Alexa Fluor® 647	AFR11060
	Alexa Fluor® 488	AFG10500		Alexa Fluor® 488	AFG11061
SARS-CoV-2	Alexa Fluor® 647	AFR10500	Alpha	Alexa Fluor® 647	AFR10500
	Alexa Fluor® 488	AFG10796		Alexa Fluor® 488	AFG11056
	Alexa Fluor® 647	AFR10796		Alexa Fluor® 647	AFR11056
Beta	Alexa Fluor® 488	AFG10786	Gamma	Alexa Fluor® 647	AFR10786
	Alexa Fluor® 647	AFR10786		Alexa Fluor® 488	AFG10795
	Alexa Fluor® 488	AFG10878		Alexa Fluor® 647	AFR10795
Delta	Alexa Fluor® 647	AFR10878	Kappa	Alexa Fluor® 488	AFG10861
	Alexa Fluor® 488	AFG10878		Alexa Fluor® 647	AFR10861
	Alexa Fluor® 647	AFR10878		Alexa Fluor® 488	AFG10876
ACE-2	Alexa Fluor® 488	AFG11229			
	Alexa Fluor® 647	AFR11229			
	Alexa Fluor® 488	AFG933			

