

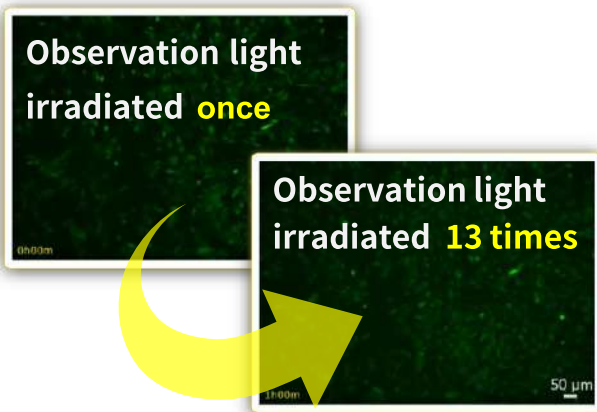
Innovation in ROS Detection

The Intracellular ROS Level

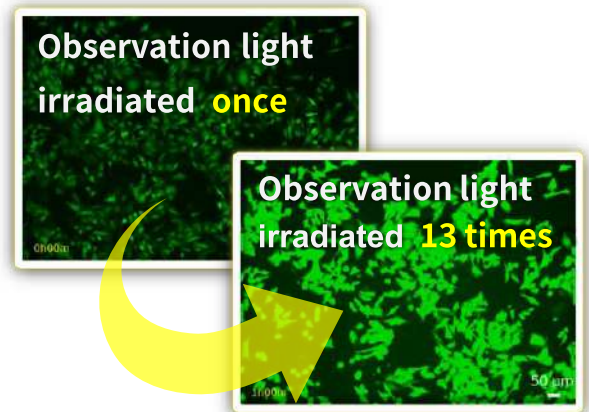
in normal HeLa cells without any stimulation.

아직도 빛에 민감한 DCFH 사용중이신가요? 광내성을 가진 제품을 사용해 보세요!

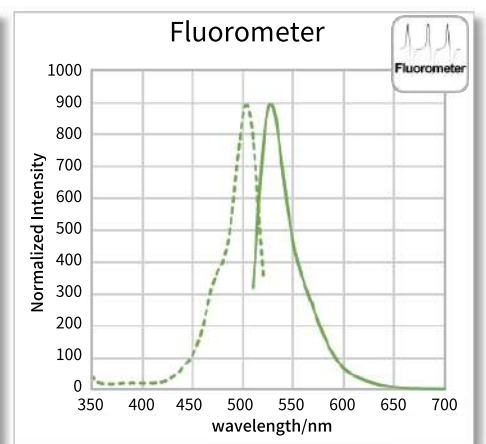
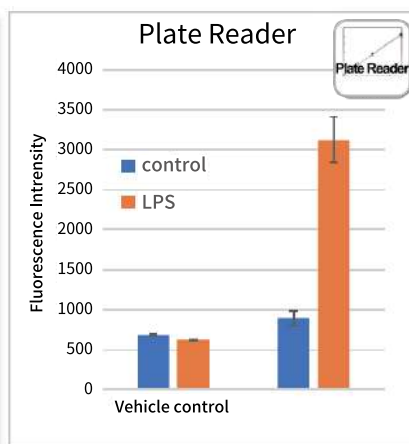
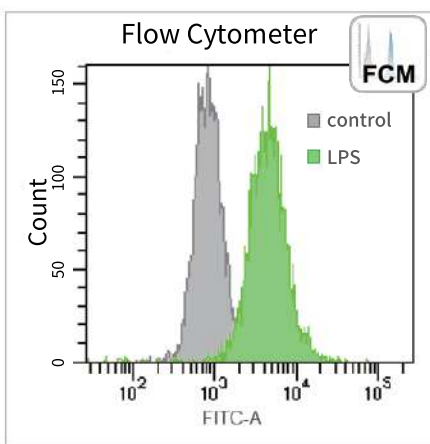
A: Without Photo-oxidation



B: With Photo-oxidation



Applicable for different kind of instruments

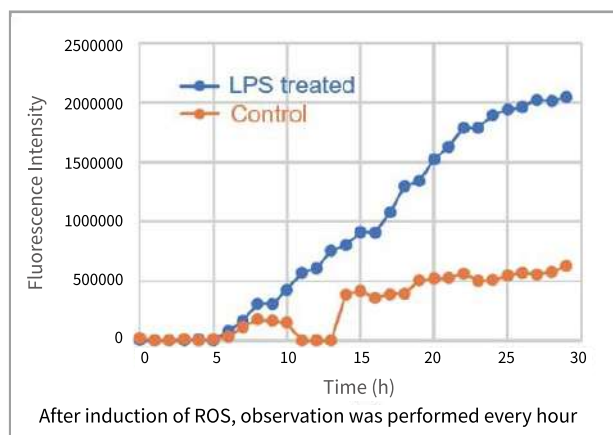
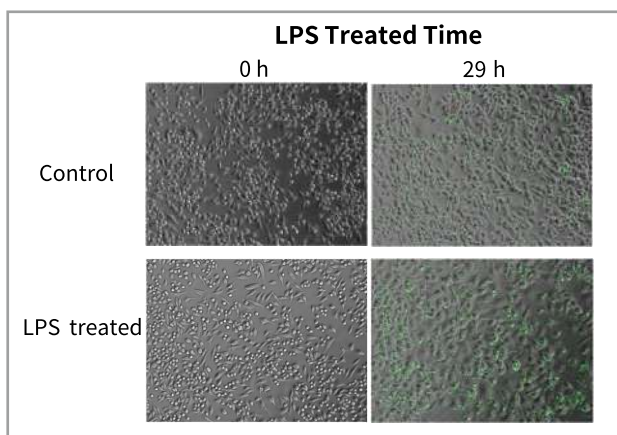


Product Name	Unit size	Price	Code
ROS Assay Kit-Highly Sensitive DCFH-DA-	100 tests	Inquiry	R252
NEW ROS Assay Kit-Photo-oxidation Resistant DCFH-DA-	100 tests	Inquiry	R253

*General usage for 100 tests :5 plates of 35 mm dish or 1 plate of 96-well plate

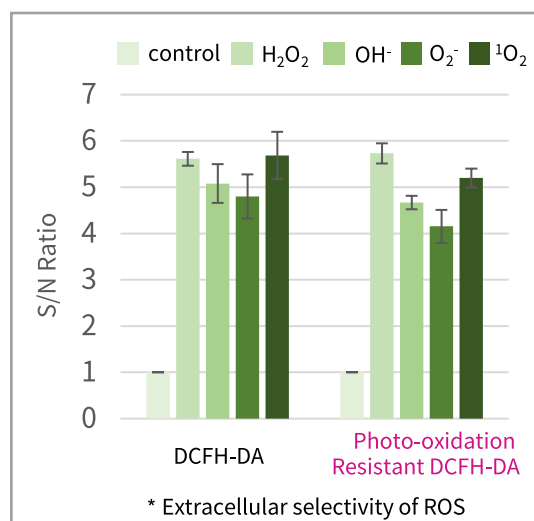
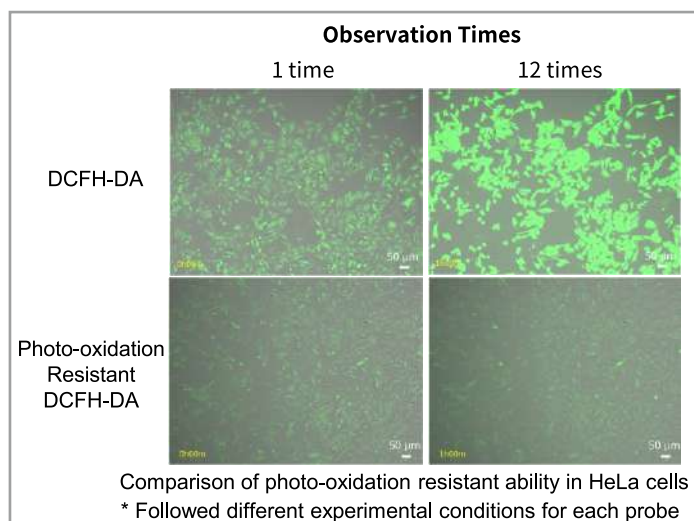
Simultaneous Detection of ROS in LPS-treated macrophages

Using ROS Assay Kit-Photo-oxidation Resistant DCFH-DA-stained RAW264.7 cells, the result showed that, after 10 hours of LPS-treated, the intracellular ROS level was significantly increased.



Reduction of Photo-oxidation by Observation Light

In Unstimulated HeLa cells, the results showed that the fluorescence intensity of DCFH-DA increased as the probe was photo-oxidated with excitation light, while Photo-oxidation Resistant DCFH-DA significantly suppressed photo-oxidation during observation.



	Dojindo Laboratories		Company T	
Code	R253	R252	-	-
Product Name	ROS Assay Kit -Photo-oxidation Resistant DCFH -DA- NEW	ROS Assay Kit -Highly Sensitive DCFH -DA-	Probe D	Probe C
Photo oxidation resistant	★★★★★ The highest resistant ability	With no resistant ability	With no resistant ability	With no resistant ability
Cell fixation	★★★★★ The highest retention ability	With no retention ability	With no retention	★★★★ OK for fixation
Sensitivity	★★★★★ Better sensitivity	★★★★★ The highest sensitivity	★★★ Ordinary	★★★ Ordinary