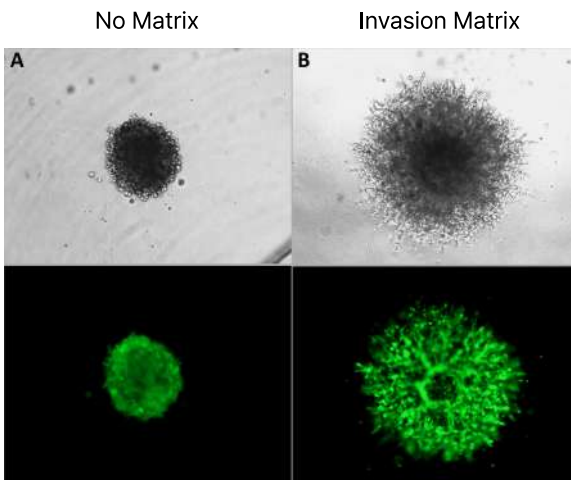


목적에 따라 선택하는 Invasion Assay Kit

● Case 1. **Organoid/spheroid** 사용해서 invasion assay 하고싶다면? ●

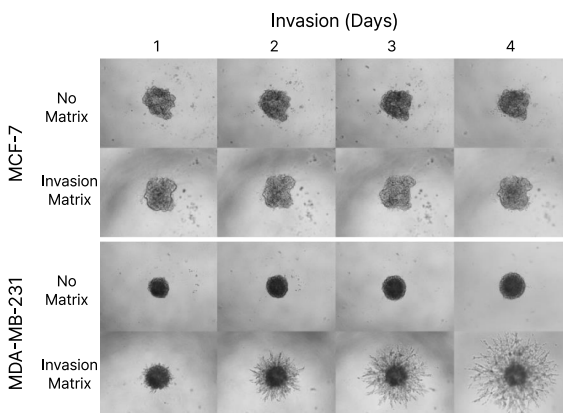
Data



Embedding spheroid in BME for cell invasion and migration assays.

Cell: MDA-MB-231

Matrix가 있을 때에만 spheroid가 형성됨 (B)

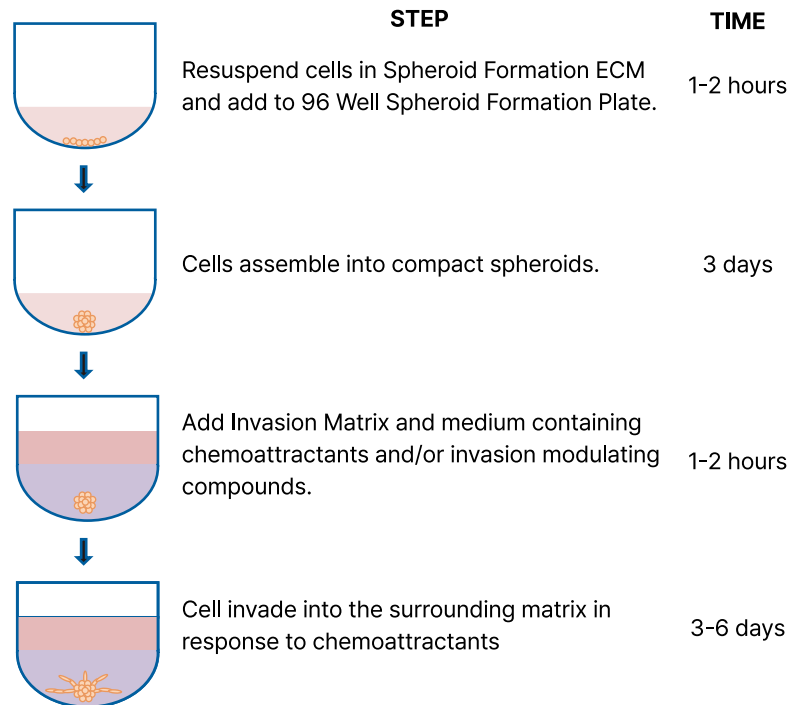


Morphology of 3D cell invasion over a four days period

Cell: MCF-7 (Non-invasive), MDA-MB-231 (Invasive)

Matrix가 있을 때 invasive cell (MDA-MB-231)만 spheroid가 형성됨 (마지막 줄 data)

Procedure



Total Time: 6-9 days

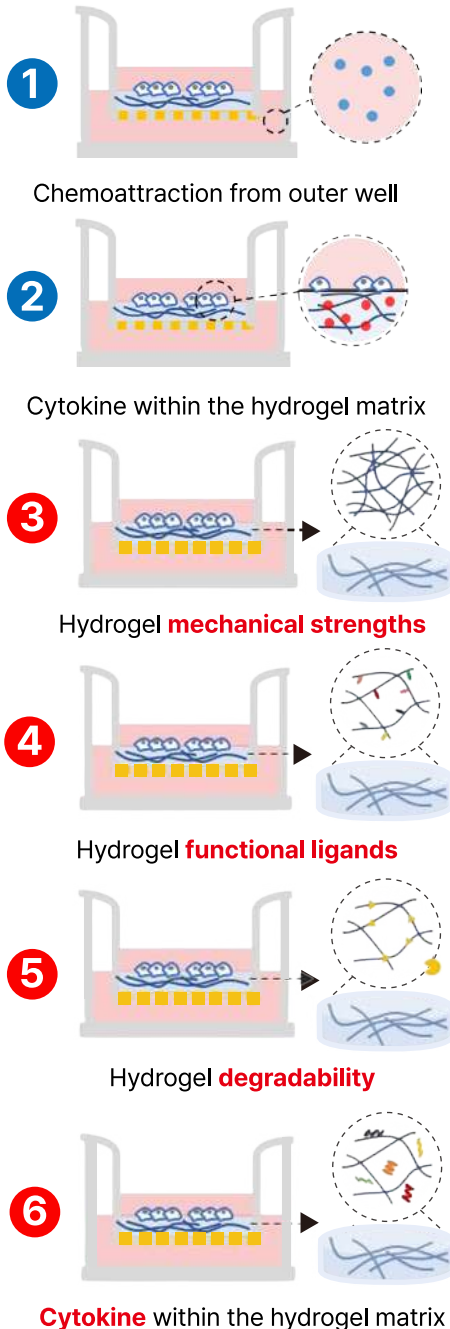
Product list

Cat#	Name
3500-096-K	Cultrex 3-D Spheroid Basement Membrane Extract Cell Invasion Assay, 96-well
3500-096-03	Cultrex Spheroid Invasion Extracellular Matrix

● Case 2. **다양한 조건**에서 invasion assay를 하고싶다면?! ●

- Xeno-free Hydrogel
- 상온에서 안정 → 자동화 장비 사용 가능
- Hydrogel 특징 자유롭게 조절 가능 (강도, ligand, 분해성 등)
- CD Hydrogel → Lot Consistency & Reproducible Result

이렇게 사용해 보세요!



Product list

Ready-to-Use Hydrogel

Product Name	Cat. No.
VitroGel [®] Cell Invasion Assay Kit	IA-VHM01-1P
	IA-VHM01-4P

High-Concentration Hydrogel

Product Name	Cat. No.
VitroGel [®] 3D Cell Invasion Assay Kit	IA-HC 001-1P
	IA-HC 001-4P
VitroGel [®] RGD Cell Invasion Assay Kit	IA-HC 003-1P
	IA-HC 003-4P
VitroGel [®] IKVAV Cell Invasion Assay Kit	IA-HC 007-1P
	IA-HC 007-4P
VitroGel [®] YIGSR Cell Invasion Assay Kit	IA-HC 008-1P
	IA-HC 008-4P
VitroGel [®] COL Cell Invasion Assay Kit	IA-HC 009-1P
	IA-HC 009-4P
VitroGel [®] MMP Cell Invasion Assay Kit	IA-HC 010-1P
	IA-HC 010-4P

Cat# -1P: Hydrogel 1mL, 24well plate 1개, Insert 12개 제공
 Cat# -4P: Hydrogel 4mL, 24well plate 4개, Insert 48개