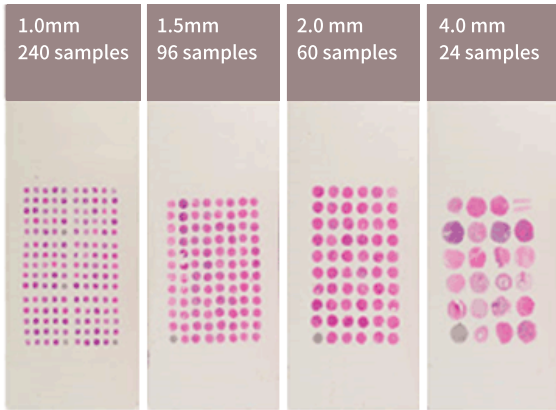


Easy to Get Human Tissue Sample!

# Human Tissue Microarray & Slide

## Tissue Microarray (TMA)

- 하나의 slide에 동일한 tissue section을 많은 N수로 제공



**High-throughput-** 한 번의 실험으로 최대 75개 Data

**Target screening-** Disease 단계별 tissue를 이용해서 screening

**Uniformed experiment-** 동일한 condition에서 만들어진 tissue

**Comparison-** Tumor vs Normal in the same slide

Donor Information

Age	Sex	Diagnosis	History	Size(cm)	Diff.	TNM
80	F	Adenocarcinoma	14 months	6X4X3	Moderately	T3NOMO
80	F	Matched Normal Tissue				
60	M	Adenocarcinoma, tubular	1 months	4X3X3	Moderately	T2NOMO
60	M	Matched Normal Tissue				
53	M	Adenocarcinoma	0.7 months	3X3X2	Moderately	T2NOM1
53	M	Matched Normal Tissue				

## Tissue Slide (IHC Slide)

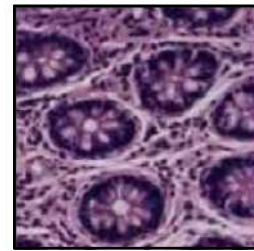
- Slide 하나 당 하나의 tissue, 총 5개 slide 제공

**Large number of section-** 400개 이상의 FFPE tissue slide

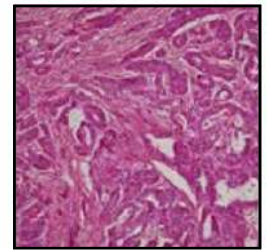
**Experimental controls-** 연구 질환의 negative control로 사용

**질병 stage별 tissue 제공-** 질병 단계에 따른 발현양 변화 확인

**Easy & Short-** Sampling ~ blocking 까지 완료. Ab만 있으면 실험 가능



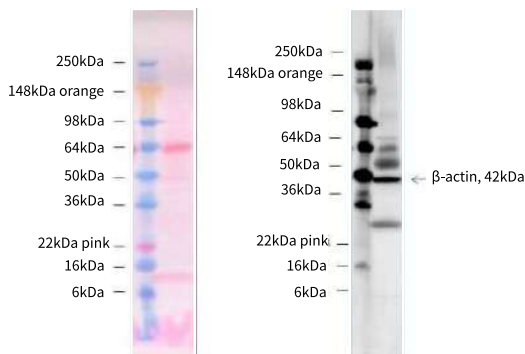
Human Colon Tissue Slide (Normal)  
Cat# NBP2-30177



Human Colon Tissue Slide (Adenocarcinoma)  
Cat# S165WO

## Tissue Lysate

- Human tissue lysate 형태로 제공



Ponceau S Staining for total protein Western Blot for  $\beta$ -actin  
Human Pancreas Whole Tissue Lysate  
(Cat# NB820-59244)

### 제품 정보

- Concentration 1~5 mg/ml
- Protein State: Native
- Application: WB, IP

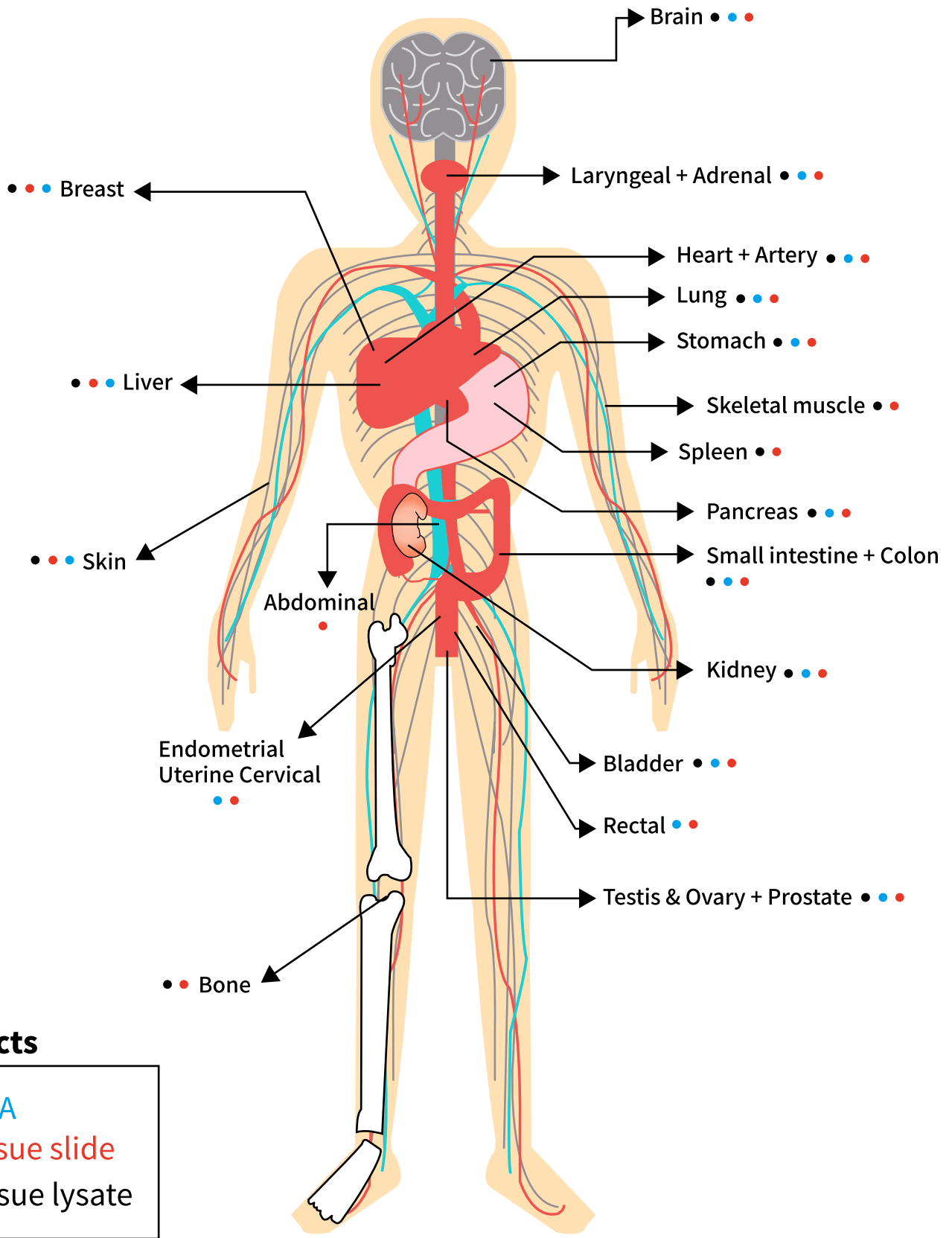
**Experimental controls-** Normal tissue를 이용해서 control로 사용가능  
**다양한 질환 tissue lysate-** 암, 당뇨, 루푸스, 간경화 등

**Lysate Pair-** Primary tumor와 metastatic tumor lysate를 묶어서 제공

**Matched Lysate-** 동일한 환자에게서 얻은 tumor lysate와 normal tissue lysate를 묶어서 제공



# Products by Human Organ System



## Products

- TMA
- Tissue slide
- Tissue lysate