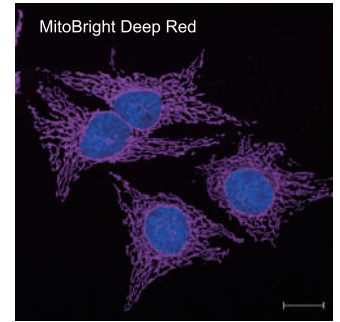
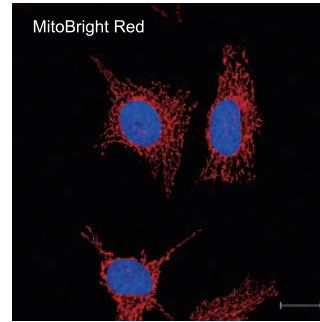
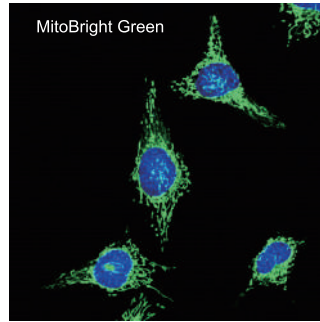


Mitochondrial Staining Reagent

MitoBright is well retained in mitochondria because of its covalent bond ability to proteins.

**MitoBright Series
(Green/ Red/ DeepRed)**

Co-staining of each mitochondrial staining dye and Hoechst 33342 (blue) in HeLa cell



MitoBright series line-up

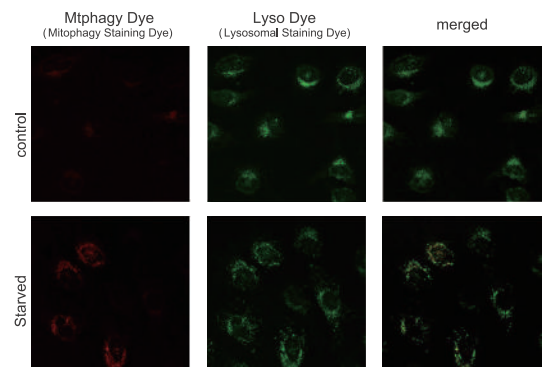
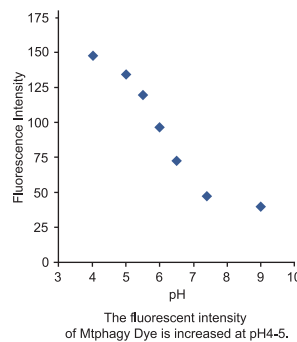
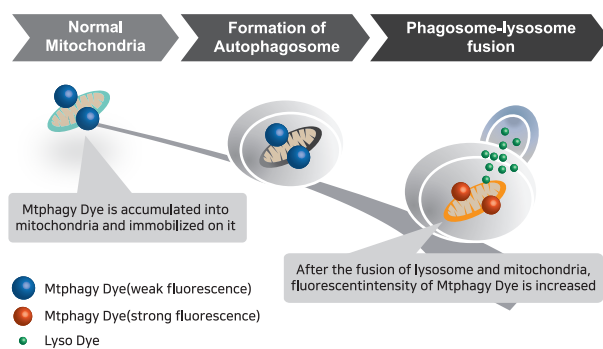
| Description | λ_{ex} | λ_{em} | live imaging | staining before fixation* | staining after fixation |
|---------------------|----------------|----------------|--------------|---------------------------|-------------------------|
| MitoBright Green | 493 nm | 508 nm | ○ | ○ | × |
| MitoBright Red | 547 nm | 563 nm | ○ | ○ | × |
| MitoBright Deep Red | 643 nm | 663 nm | ○ | ○ | × |

※ PFA (paraformaldehyde) fixation

Suitable unit size

| Description | Unit | Code |
|---------------------|-----------------------|------|
| MitoBright Green | 50 μ g \times 3 | MT06 |
| MitoBright Red | 50 μ g \times 3 | MT07 |
| MitoBright Deep Red | 50 μ g \times 3 | MT08 |

Mitophagy Detection Kit



The publication of Mitophagy Detection Kit includes the detection principle and experimental data.

H. Iwashita, S. Torii, N. Nagahora, M. Ishiyama, K. Shioji, K. Sasamoto, S. Shimizu and K. Okuma, "Live Cell Imaging of Mitochondrial Autophagy with a Novel Fluorescent Small Molecule", *ACS Chem. Biol.*, **2017**, *12*. 2546.

※ Other publications are listed online. Please visit at www.dojindo.com.

| Description | Unit | Code |
|-------------------------|-------|------|
| Mitophagy Detection Kit | 1 set | MD01 |

Mitochondrial Research를 위한 모든 Reagents 여기 다 있어요~

