

NK cell Research

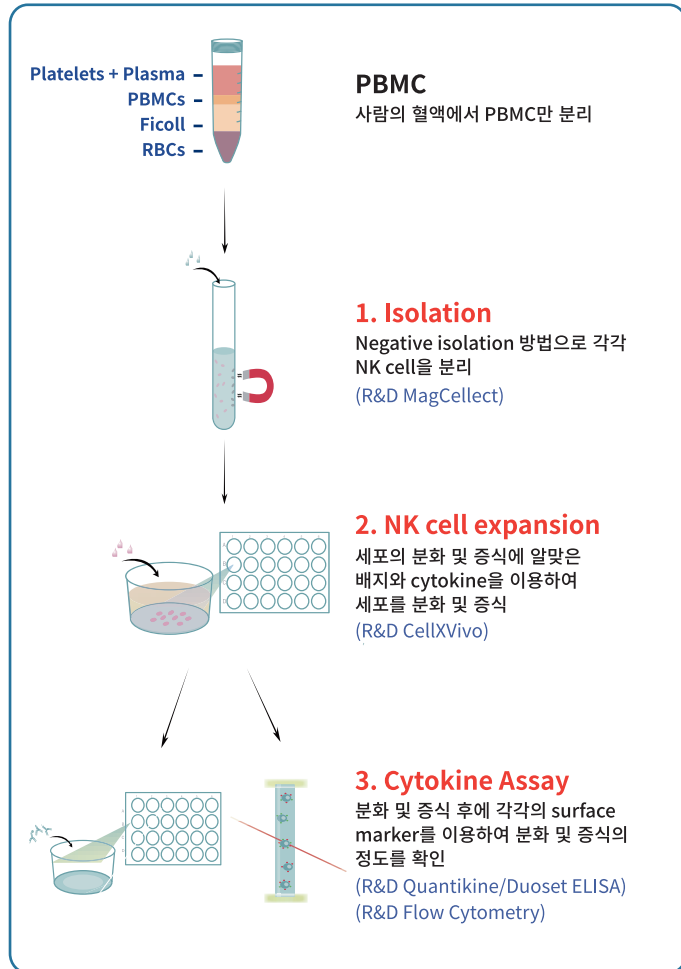
1. Isolation

2. Expansion

3. Identify & Characterization

1. Isolation

Kit	Catalog #
MagCelect™ Human NK Cell Isolation Kit	MAGH109
MagCelect™ Mouse NK Cell Isolation Kit	MAGM210



2. Expansion

Kit	Catalog #
CellXVivo HumanNK cell Expansion Kit	CDK015

■ High Quality R&D Systems Cytokine 포함 ■ 추가 장비 필요없이 kit 하나면 OK

Growth factor for Culturing NK Cells

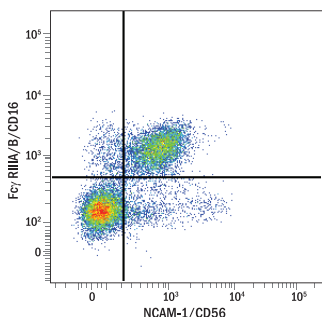
Natural Killer (NK) Cells			
Molecule	Species	Source	Catalog #
IL-2	Human	E. coli	202-IL
	Mouse	E. coli	402-IL
	Rat	E. coli	502-IL
IL-12	Human	Sf21(baculovirus)	219-IL
	Human	HEK293	10018-IL
	Mouse	Sf21(baculovirus)	419-ML
	Mouse	NSO	10051-ML
IL-15	Human	Sf21(baculovirus)	1760-RL
	Human	E. coli	247-ILB
IL-18/IL-1F4	Human	E. coli	447-ML
	Human	E. coli	9124-IL
IL-18/IL-1F4	Human	E. coli	B001-5
	Mouse	E. coli	9139-IL
	Mouse	E. coli	B002-5
IL-21	Human	E. coli	8879-IL
	Mouse	E. coli	594-ML

3. Identify & Characterization

Suggested Kits for ELISA / ELISpot

Molecule	Species	Quantikine® ELISA Catalog #	DuoSet® ELISA Catalog #	ELISpot Kit Catalog #
GM-CSF	Human	DGM00	DY215	
	Mouse	MGM00	DY415	
Granzyme B	Human			EL2906
	Mouse		DY1865	EL1865
IFN-γ	Human	DIF50	DY285	EL285
	Mouse	MIF00	DY485	EL485
IL-10	Human	D1000B	DY217B	EL217B
	Mouse	M1000B	DY417	EL417
TNF-α	Human	DTA00C	DY210	
	Mouse	MTA00B	DY410	EL410

Identification of Human Natural Killer Cells by Flow Cytometry



Human peripheral blood lymphocytes were stained with a PE-conjugated Mouse Anti-Human NCAM-1/CD56 Monoclonal Antibody (Catalog # FAB2408P) and a Fluorescein-conjugated Mouse Anti-Human FcγRIIIA/B/CD16 Monoclonal Antibody (Catalog # FAB2546F). Cells were gated on CD3⁺ lymphocytes.



(TEL) 02-881-5432
(FAX) 02-881-5454



<http://www.woongbee.com/>



techserv@woongbee.com
woongbee@woongbee.com