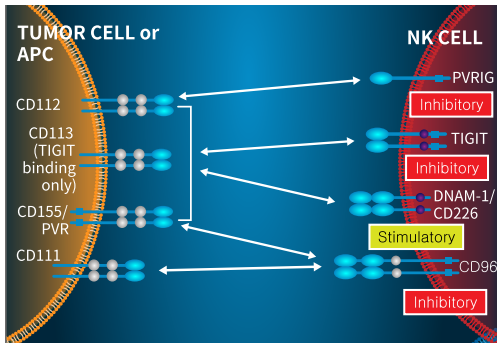


NK Cell for

Immuno-Oncology

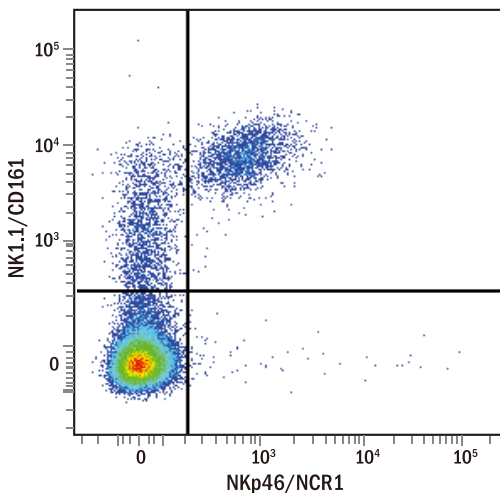
NK Cell Therapy는 R&D Systems!

NK Cell Factor의 다양한 Antibody를 사용해 보세요!



R&D Ab만의 장점

- Fully Characterized Abs
- Quantikine Quality Based Abs
- Lyophilized-Form으로 안정성 극대화
- NK Cell Factor Abs 다량 보유



Detection of NKp46⁺ NK1.1⁺ Mouse Splenocytes by Flow Cytometry

Mouse splenocytes에 APC-conjugated Rat Anti-Mouse NKp46/NCR1 Monoclonal Antibody 와 PE-conjugated Mouse Anti-Mouse NK1.1/CD161 Monoclonal Antibody를 염색

Target	Species	Unconjugated Abs	Available Flow Cytometry
Natural Cytotoxicity Receptors (NCR) & Ligands			
B7-H6	H	MAB7144 (FC)	APC, PE
NKp30	H	MAB1849 (FA,FC), MAB18491 (FA), AF1849 (WB)	APC, PE, Alexa Fluor 488
NKp44	H	MAB22491 (FA, FC), MAB2249 (WB), AF2249 (FA, WB)	APC, PE
NKp46/NCR1	H	MAB1850 (FA, FC, ICC/IF, WB) AF1850 (ICC/IF, WB)	APC, Fluorescein, PE
	M	MAB22252 (FC), AF2225(FA, FC, WB), MAB2225 (WB)	APC, Fluorescein, PE, PerCP, Alexa Fluor 488, Alexa Fluor 700
NKp80/KLRF1	H	MAB1900 (FC), AF1900 (FC, WB)	APC, PE
NKG2 Family Receptors			
CD94	H	MAB1058 (B/N, FC)	APC, Fluorescein, PE
NKG2A	H	MAB1059 (FC)	APC, PE, PerCP, Alexa Fluor 700
	M	MAB6867 (FC)	APC, PE, Alexa Fluor 488
NKG2C	H	MAB138 (FC), MAB1381 (FC)	APC, PE, PerCP, Alexa Fluor 488, Alexa Fluor 647, Alexa Fluor 700
Killer Immunoglobulin-like Receptors (KIRs)			
KIR pan/CD158	H	MAB1848 (FC)	APC, Fluorescein, PE
KIR2DL1/S5	H	MAB1844 (FC)	APC, Fluorescein, PE, PerCP, Alexa Fluor 488, Alexa Fluor 700
KIR2DL3	H	MAB2014 (FC)	APC, Fluorescein, PE, PerCP
KIR2DL4	H	MAB2238 (FA, FC)	APC, Fluorescein, PE
KIR3DL1	H	MAB12251 (FA, FC), MAB 1225 (B/N, FC)	APC, Fluorescein, PE
KIR3DL2	H	MAB2878 (FC)	APC, PE, PerCP, Alexa Fluor 700
KIR2DS4	H	MAB1847 (FC, WB)	APC, PE, PerCP, Alexa Fluor 488
NKG2D and NKG2D Ligands			
NKG2D	H	MAB139 (B/N, FA, FC, WB)	APC, PE, PerCP, Alexa Fluor 488, Alexa Fluor 700
	M	MAB1547 (B/N, FC, WB)	APC, Fluorescein, PE
H60	M	MAB1155 (B/N, FC, WB)	APC, PE, Alexa Fluor 488, Alexa Fluor 700
MICA	H	MAB1300 (B/N, FC, WB)	APC, PE, Alexa Fluor 488
MICB	H	MAB1599 (FC, WB)	APC, PE, PerCP, Alexa Fluor 488, Alexa Fluor 700
MICA/B	H	MAB13001 (B/N, FC, IHC)	APC, PE, Alexa Fluor 488, Alexa Fluor 700
Rae-1 Pan	M	MAB17582 (FC)	APC, Fluorescein, PE, PerCP, Alexa Fluor 700
Rae-1 α/β/γ	M	MAB1758 (B/N, FC)	APC, Alexa Fluor 488
Rae-1 ε	M	MAB1135 (B/N, FC)	APC, PE
ULBP-1	H	MAB1380 (B/N, FC)	APC, PE, PerCP, Alexa Fluor 488
	M	MAB2588 (FC)	APC, PE, PerCP, Alexa Fluor 700
ULBP-2/5/6	H	MAB1298 (B/N, FC)	APC, Fluorescein, PerCP
ULBP-3	H	MAB1517 (B/N, FC)	APC, PE
ULBP-4/RAET1E	H	MAB6285 (FC, IHC, WB)	APC, PE

02 Culture & Isolation tools

Culture Product	
Product Name	Cat#
MagCelect Mouse NK Cell Isolation Kit	MAGM210
MagCelect Human NK Cell Isolation Kit	MAGH109
CellXVivo Human NK Cell Expansion Kit	CDK015
ExCellerate Human NK Cell Expansion Media	CCM032
FlowX Human NK Cell Phenotyping Flow Cytometry Kit	FMC033

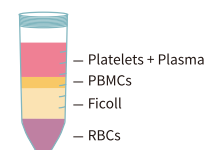
Cytokine			
Name	Cat #	GMP	Animal Free
IL-2	BT-002	BT-002-GMP	BT-002-AFL
IL-4	6507-IL	204-GMP	AFL204
IL-7	BT-007	BT-007-GMP	BT-007-AFL
IL-12	10018-IL		
IL-15	BT-015	BT-015-GMP	BT-015-AFL
IL-18	9124-IL		
IL-21	8879-IL	8879-GMP	



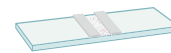
Coat 75 cm² flask with NK Cell Expander 1 (1X).



Isolate PBMCs from human blood.

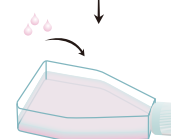


Perform a cell count.



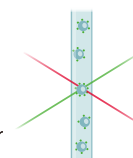
Suspend 1×10^6 PBMCs/mL in Human NK Cell Expansion Media.

Culture the cells in the pre-coated 75 cm² flask for a total of 14 days.



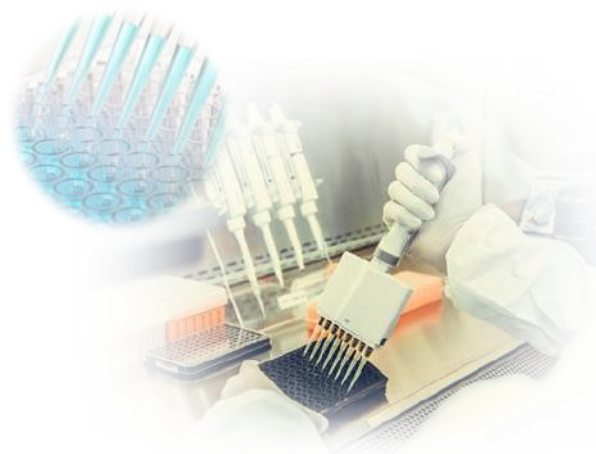
Verify expanded NK cells by analyzing NK cell marker expression via flow cytometry (optional).

NK cells are ready to be used for downstream applications.



03 Analysis tools

Molecule	Quantikine ELISA	DuoSet ELISA	ELISpot
IFN-gamma	○	○	○
TNF-alpha	○	○	○
IL-5	○	○	
IL-10	○	○	○
IL-13	○	○	
TGF-beta	○	○	
IL-6	○	○	
GM-CSF	○	○	○
Granzyme B		○	○



Proteome profiler (Antibody Array)	
Name	Cat #
Proteome Profiler Human Phospho-Immunoreceptor Array Kit	ARY004B
Proteome Profiler Human XL Cytokine Array Kit	ARY022B
Proteome Profiler Human XL Oncology Array	ARY026
Proteome Profiler Human Angiogenesis Array Kit	ARY007
Proteome Profiler Human Chemokine Array Kit	ARY017

R&D SYSTEMS
a biotechné brand

웅비메디텍
02.881.5432



웅비·나
웅비 Webinar

Tel : 02-881-5432 | Mail : techserv@woongbee.com

웅·테·나
웅비 Table Seminar

