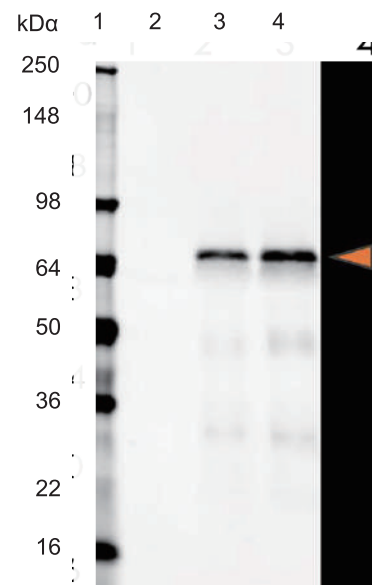
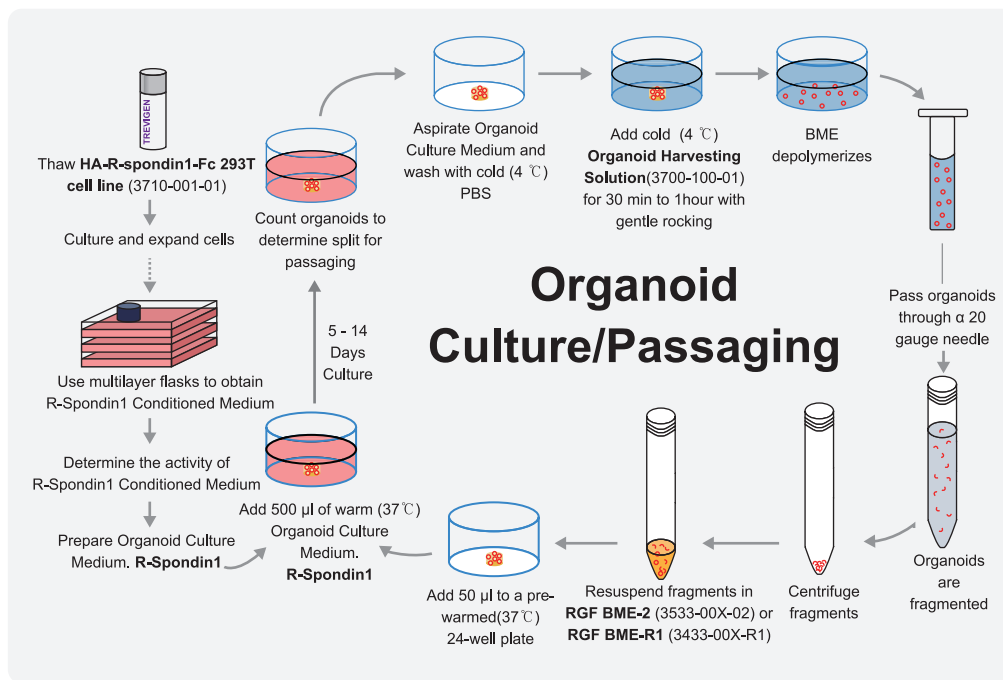


R-Spondin 1 Organoid Culture

- Organoid Culture 필수품인 R-Spondin1 protein expressed Cell Line
- Human/ Mouse Organoid 모두 사용 가능
- Reference Lab: Hans Clevers

Order Information

Name	Catalog Number	Size
Cultrex® R-spondin1 (RSP01) Cells	3710-001-01	1 vial (0.5ml) 1×10 ⁶ cells



2: Negative CiL
314: RSP01 Conditioned Media

Related Products

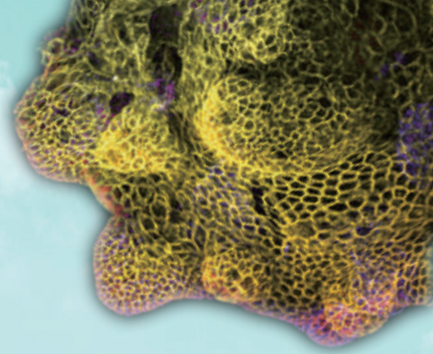
Recombinant Protein

Name	Specise	Cat#	GMP Cat#
Activin A	H/M/R	338-AC	338-GMP
BMP-4	H	314-BP	314-GMP
	M	5020-BP	
EGF	H	236-EG	236-GMP
	M	2028-EG	
HGF	H	294-HGN	
	M	2207-HG	294-GMP
Noggin	H	6057-NG	
	M	1967-NG	6057-GMP
Wnt-3a	H	5036-WN	
	M	1324-WN	5036-GMP

Small Molecules

Name	Cat#	GMP Cat#
A83-01	2939	
Retinoic acid	0695	
SB202190	1264	
SB431542	1614	TB1614-GMP
Y-27632	1254	TB1254-GMP
CHIR 99021	4423	TB4423-GMP

Organoid Culture Matrix 추천!

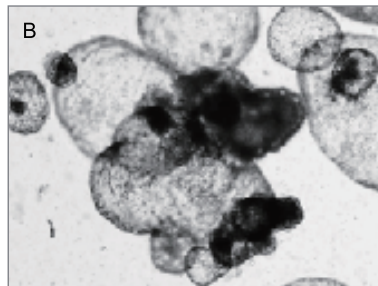
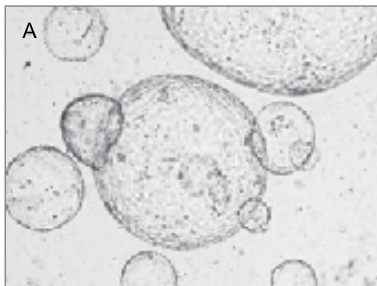


- 타사 대비 **High Concentration**: 12- 18mg/mL
- 낮은 **Endotoxin Level**: ≤ 1.5 EU/mL by LAL Assay

Name	Size	Catalog #
Cultrex® Basement Membrane Extract Type2	1 ml	3532-001-02
	5 ml	3532-005-02
	2 x 5 ml	3532-010-02
Cultrex® Reduced Growth Factor Basement Membrane Extract Type2	1 ml	3533-001-02
	5 ml	3533-005-02
	2 x 5 ml	3533-010-02
Cultrex® Reduced Growth Factor Basement Membrane Extract, Type R1	1 ml	3433-001-R1
	5 ml	3433-005-R1
	2 x 5 ml	3433-010-R1

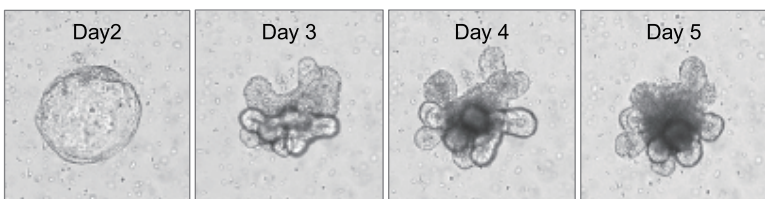
Cultrex BME Selection Chart			
NAME	BUFFER	CONCENTRATION	RECOMMENDED APPLICATIONS
Cultrex® Original BME	DMEM	12-18mg/ml	General (2D Culture, 3-D Culture, Attachment, Invasion, etc.)
Cultrex® Stem Cell Qualified BME	DMEM	12-18mg/ml	Attachment and Maintenance of Stem Cells
Cultrex® 3-D Culture Matrix™ BME	DMEM	14-16mg/ml	3-D Culture
Cultrex® BME, Type 3	RPMI1640	12-18mg/ml	Xenograft/Tumorgraft
*Cultrex® Organoid Qualified BME, Type 2	DMEM	12-18mg/ml	Robust Organoid Culture
*Cultrex® Organoid Qualified BME, Type R1	DMEM	12-18mg/ml	Difficult to Grow Organoid Culture

*Organoid culture 용으로 추천제품: 특히 BME, TypeR1은 entactin 함유량이 많아 tissue 및 organoid를 culture 하는데 적합



Human Pancreatic Organoids Cultured in Cultrex® Reduced Growth Factor BME, Type 2.

Human pancreatic progenitor cells were cultured in Cultrex RGF BME, Type 2 (Catalog # 3533-001-02) and were differentiated into pancreatic organoids.



Growth of Mouse Colon Organoids in Cultrex® Reduced Growth Factor BME, Type R1.

Mouse colon organoids were embedded in Cultrex RGF BME, Type R1 (Catalog #3433-001-R1) and cultured for 5 days. Brightfield images show the progression of organoid formation (Day 1 - 5) after passage.