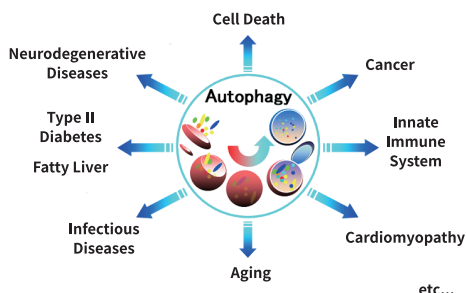


Tools for Autophagy Research

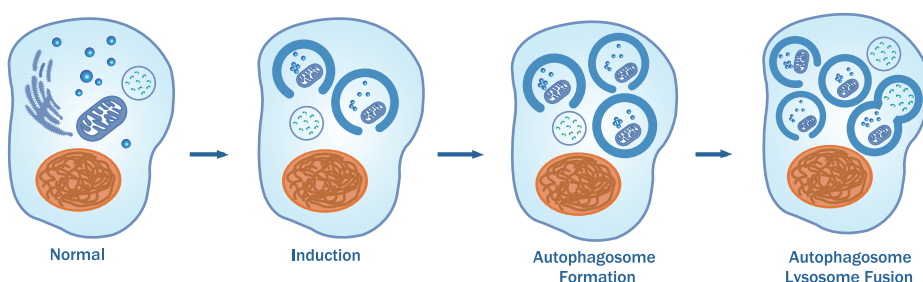
- Ab Markers
- Activators
- Inhibitors
- Detection Reagents

Autophagy

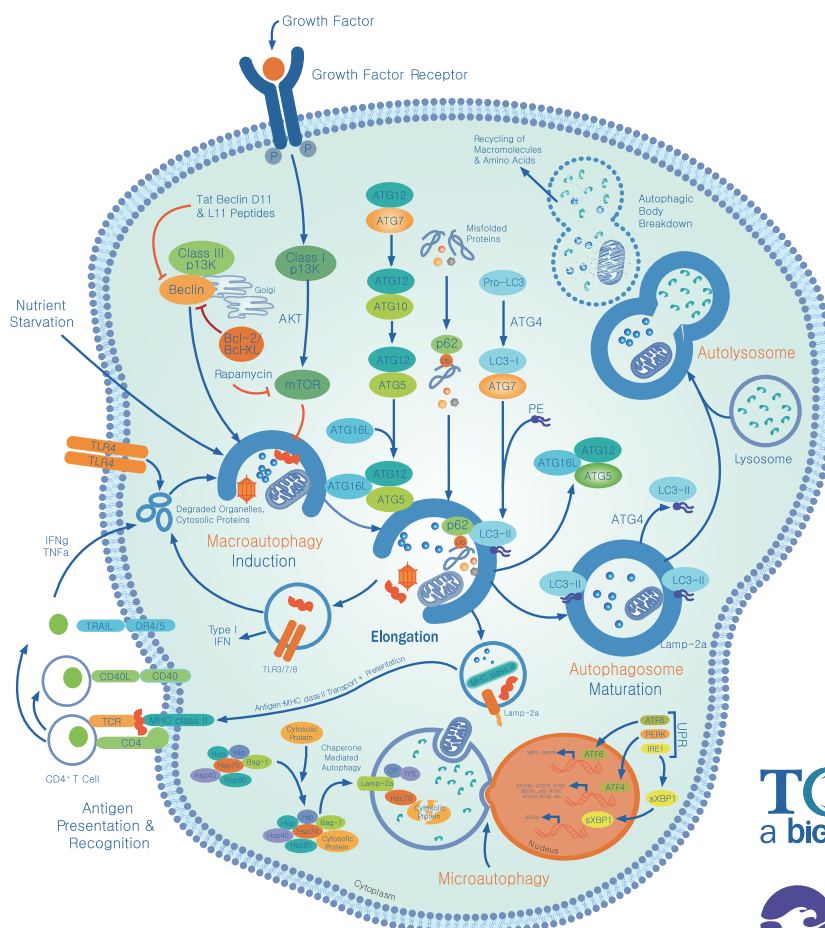
- 세포의 생존 및 항상성 유지를 위한 필수기작
- 다양한 연구분야 접목
- 퇴행성 뇌질환 분야의 key



Cat #	Products
Autophagy Activators	
1234/10	A23187, free acid
4095/50	Amiodarone
1231/5	Brefeldin A
4098/50	Carbamazepine
1126/100	Dexamethasone
3093/10	Dorsomorphin
3993/1	EB1089
0741/1	GF109203X
0681/10	L-690,330
1391/10	NF449
4079/50	Niclosamide
0600/100	Nimodipine
0601/50	Nitrendipine
2930/1	PI103
1267/10	Pifithrin-alpha hydrobromide
1292/1	Rapamycin
1610/10	Rottlerin
4297/10	SMER28
2706/10	Temozolomide
1138/1	Thapsigargin
4247/10	Torin1
3516/10	Tunicamycin
2815/100	Valproic acid, sodium salt
0654/1G	Verapamil
Autophagy Inhibitors	
1334/10U	Bafilomycin A1
1544/10	(±)-Bay K8644
4109/50	Chloroquine
2656/10U	Concanamycin A
4417/10	DBeQ
4545/1	E64d
1130/5	LY294002
3977/50	3-Methyladenine
1228/10	Nocodazole
1190/10	Pepstatin A
1097/10	Taxol
1256/10	Vinblastine
1232/1	Wortmannin

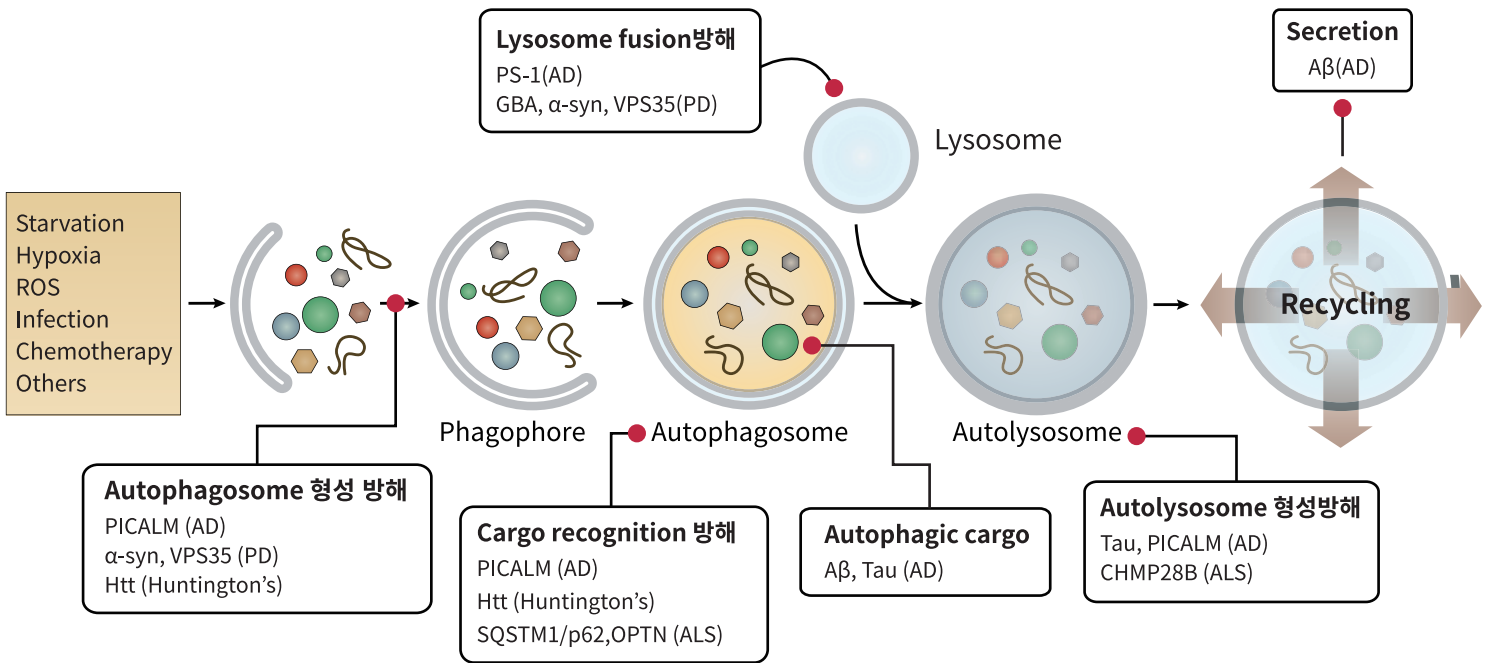


Process	Active, physiological or pathophysiological
Induction stimuli	Starvation, hypoxia, chemotherapy, growth factor deprivation
Morphological changes	Vacuolization, mass degradation of organelles & proteins
Molecular/biochemical changes	LC3I lipidation to LC3II, p62/SQ STM1 degradation, lysosomal activity
Clearance	Cekks gets cannibalized & the contents recycle for survival of the tissue



TOCRIS
a biotechne brand

웅비메디텍
02.881.5432



LC3 Antibodies

Target	Catalog #	Species	Applications
LC3	NB100-2331	H, M, R +	WB, SW, FC, ICC, IHC, IP
	NBP1-19167	H, M, R +	WB, SW, FC, ICC, IHC
	NBP1-78964	H, M, R +	WB, ICC, IHC
	NBP2-24392	H, M, R +	WB, IHC
LC3B	NB100-2220	H, M, R +	WB, SW, ICC, IHC, IP
	NB600-1384	H, M, R +	WB, SW, EM, FC, ICC, IHC
LC3C	NBP2-36664	H	WB, ICC, IHC
	NB110-74806	H	WB, IHC
LC3 Antibody Pack	NB910-40435	H, M	WB, IHC

Autophagosome 형성 방해 관련 Marker

Target	Catalog#	Species	Application
PICALM	NBP1-86658	H,M,R	WB, IHC, IHC-P
alpha-Synuclein	NBP2-15365	H,M,R +	WB, ICC/IF, IHC, IHC-Fr, IHC-P
VPS35	NB100-1397	H,M,R +	WB, ICC/IF, PEP-ELISA
HTT	NBP1-44266	H,M,R	WB, ELISA, ICC/IF, IHC
p62/SQSTM1	NBP1-42821	H,M,R	WB, ICC
	MAB8028	H,M,R	WB, SW, ICC
GBA	NBP2-66871	H,M,R	WB, IHC, IHC-P
	MAB7410	H	WB, Simple Western, ICC/IF

Autophagy Detection Reagent

Target	Catalog #	Applications
DAPGreen	D676	Autophagosome Detection
DAPGreen	D675	Autolysosome Detection

	Machines available			Application
	Fluorescent Microscope	Flow cytometer	Microplate reader	
DAPGreen	○	○	○	phagophore ~Autophagosome formation
DALGreen	○	○	×	Auto lysosome

Target	Catalog#	Species	Application
$A\beta$	NBP2-13075	H,M,R,Mk	WB, ELISA, ICC/IF, IHC (Fr, P, FrFl) IP
Tau [p Thr181]	NB100-82245	H,M,R	WB, Simple Western, IHC, IHC-P
Tau	NBP2-25163	H,M,R	WB, ICC/IF, IHC
OPTN	NBP1-84682	H,M	WB, ICC/IF, IHC, IHC-Fr, IHC-P
PS-1	NB100-74510	H,M,R,P	WB, ELISA, ICC/IF, IHC, IHC-P, IP
	NB300-749	H,M,R,P	WB, ELISA, ICC/IF, IHC, IHC-P, IP
	AF7509	H,M,R	IHC, WB
CHMP2B	MAB7509	H	IHC, WB
	NBP2-15887	H,M	WB, ICC/IF, IHC, IHC-P



전화 02-881-5432
 팩스 02-881-5454
 이메일 techserv@woongbee.com
 주소 (05854) 서울특별시 송파구 송파대로 201 테라타워2 A동 1113호(문정동642번지)