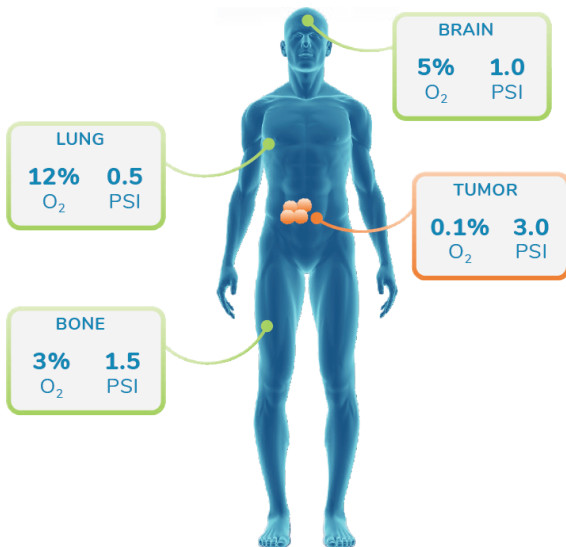


Cell Culture 혁신

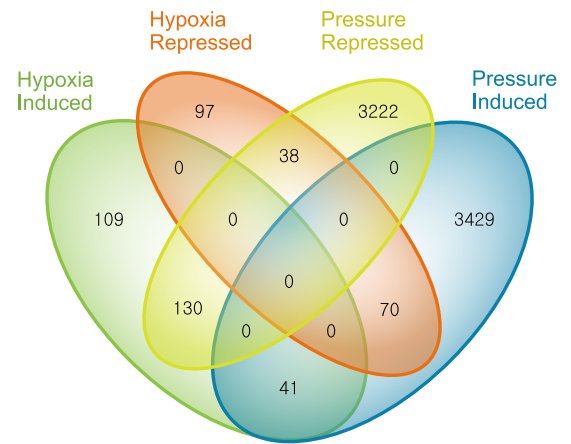
The AVATAR™ Cell Control System

- in vivo와 가장 유사한 환경!
- O₂와 압력(PSI)을 손쉽게 조작!
- 획기적인 Cell Culture결과!

- High Transfection Efficiency
- Rapid cell Expansion
- Easy Cell Control: Differentiation / Stemness
- Improve your primary tumor culture



인체 내 각 기관마다 압력 및 산소 조건이 다릅니다. 일반 incubator와 비교할 수 없는 culture 환경을 제공합니다.



Venn diagram showing the number of induced and repressed transcripts in each RNA-seq transcriptome produced in response to iPSCs exposed to hypoxia, pressure, or both.

압력 및 산소조건에 의해 달라지는 gene expression 양상을 확인하세요. Cell에 맞는 Culture 환경으로 올바른 data를 얻으실 수 있습니다.



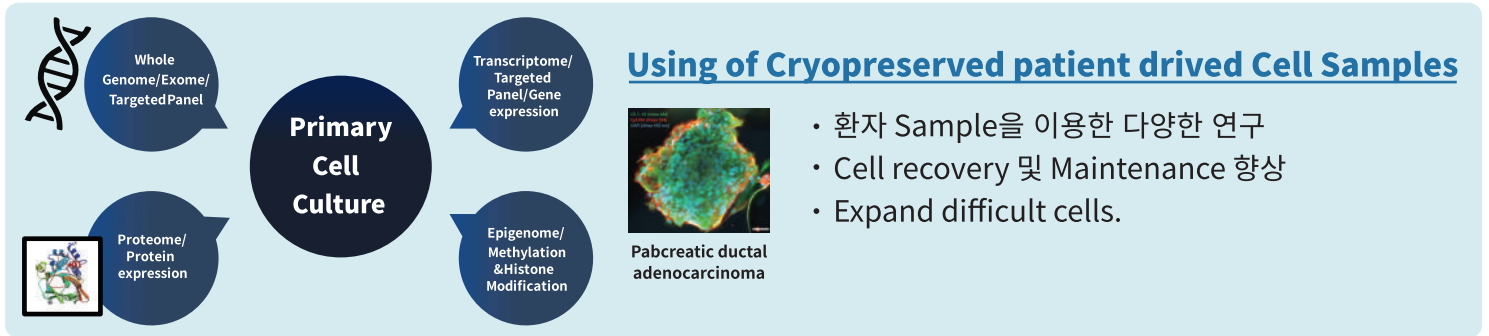
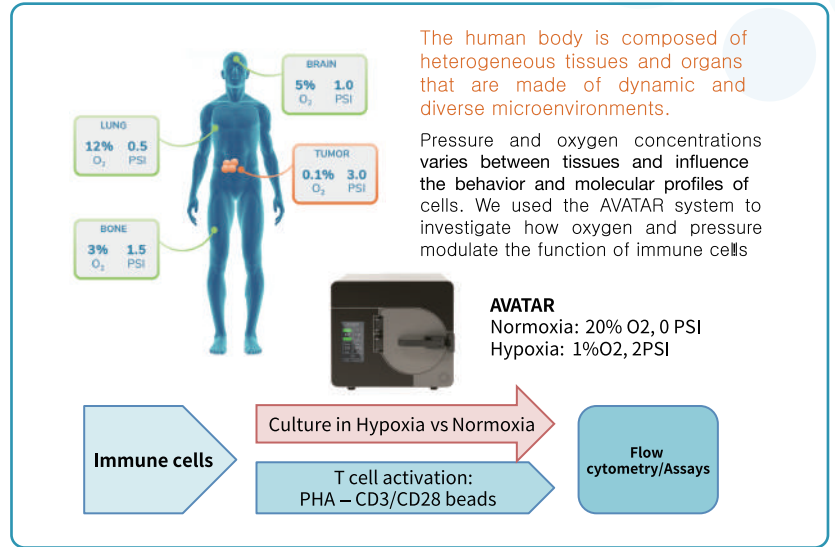
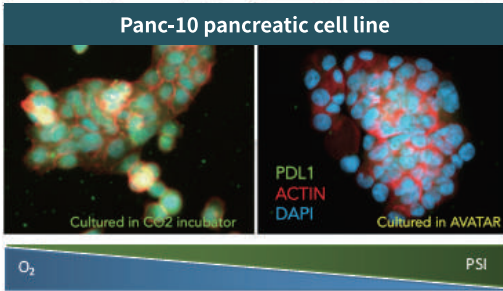
Specifications

WEIGHT: 63 lbs (28.6 kg)
 SIZE (WxDxH): 13.5" x 13.1" x 12" (34.3 x 33.3 x 30.5 cm)
 CHAMBER CAPACITY: 224 cu in. / 3.7L
 POWER: 100-240 V AC, 50/60Hz, 2Amps
 GAS REQUIREMENTS: In-line 25 psi N₂, 25psi CO₂

Tools for Cell & Gene Therapy

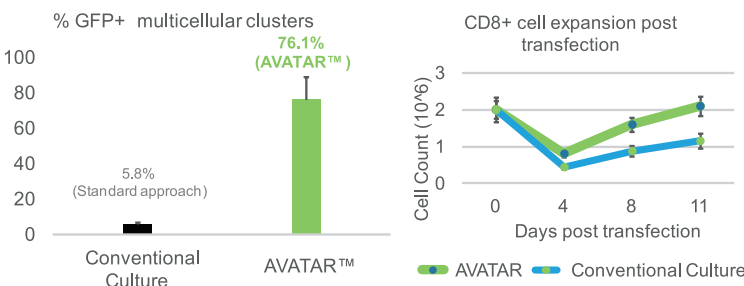
TME Study

- TME에서 immune checkpoint Rc들의 발현양상 변화.
- Cold Tumor → Hot Tumor 전환연구
- Cell-Cell Communication 연구



High Transfection / Transduction efficiency

- Gene Editing을 위한 Tool
- Transfection / Transduction 효율 향상
- Cell Recovery 향상



Immune Cell Culture

- Antigen Specific cell expansion
- DC 및 Macrophage 분화 향상
- Cell State Control
- NK/T-mediated Tumor Cell killing Assay

NK-mediated tumor cell killing assay

