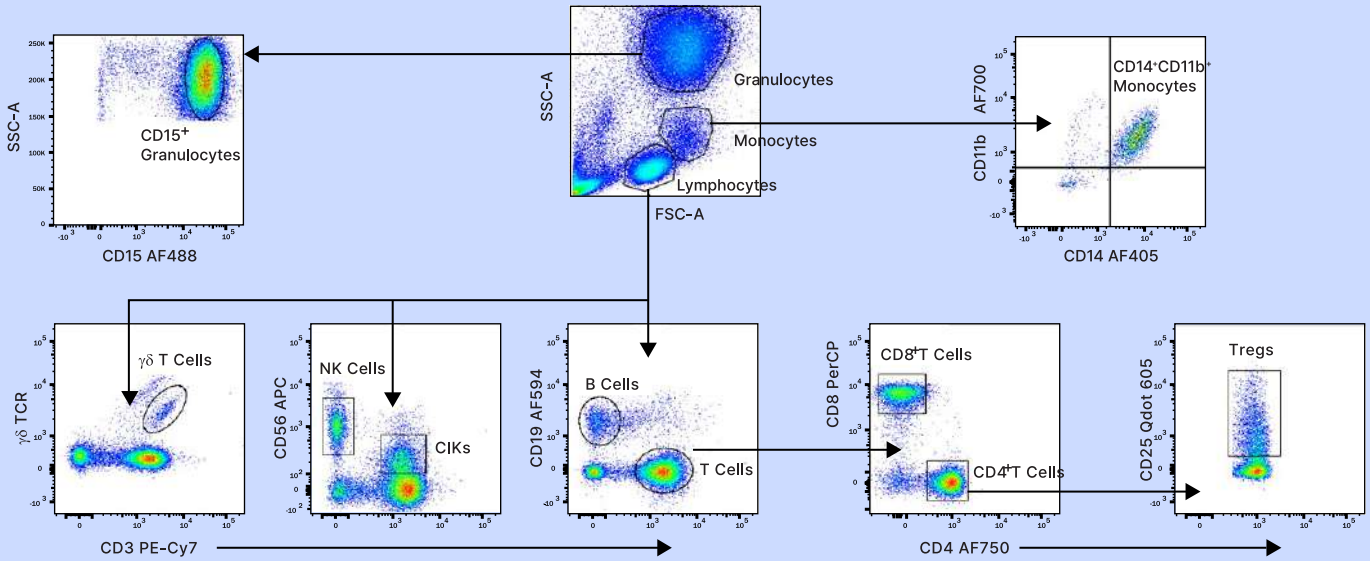




Flow Cytometry를 통한

Human Immune Cell Characterization Guide!



Human Whole Blood의 Immune Cells에서의 10-Parameter Flow Cytometry.

사용한 Abs: hCD11b/Integrin αM-AF700, hCD14-AF405, hCD15/Lewis X-AF488, hCD3-PE-Cy7, hCD4-AF750, hCD8a-PerCP, hCD19-AF594, hgdTCR-AmCyan, hCD25/IL-2Rα-BV605, hCD56/NCAM-1-APC.

각 Dot plot에 표시된 특정 염색에 의해 식별된 각기 다른 immune cell populations를 gating 하고, labeling으로 추가 염색 후 해당 특정 populations를 식별.

Markers	Clone	Fluorochrome-conjugated Abs
CCR2	48607*■	FAB150-R, S, T, U, V; FAB151-A, C, G, N, P
CCR3	61828*	FAB155-A, C, F, G, P, R, S, T, U, V
CCR4	205410*■	FAB1567-A, C, F, G, N, P, R, S, T, U, V
CCR5	CTC5■	FAB1802-A, F, G, N, P, R, S, T, U, V
CCR6	53103*■	FAB195-A, C, F, G, N, P, R, S, T, U, V
CCR7	150503*	FAB197-A, F, G, N, P, R, S, T, U, V
CCR10	314305■	FAB3478-A, G, N, P, R, S, T, U, V
CD1a	703217	FAB7076-A, G, N, P, R, S, T, U, V
CD3	UCHT1*■	FAB100-A, C, F, G, N, P, R, S, T, U, V
CD4	34930	FAB379-G, N, R, S, T, U, V
CD8α	37006	FAB1509-A, C, F, G, N, P, R, S, T, U, V
CD11b/Integrin αM	ICRF44	FAB1699-G, N, R, S, T, U, V
CD11c	ICRF3.9	FAB1777-A, C, G, N, P, R, S, T, U, V
CD14	134620■	FAB3832-A, C, F, G, N, P, R, S, T, U, V
CD15	ICRF29-2	FAB7368-G, N, R, S, T, U, V
CD16/FCγRIII	245536	FAB2546-A, C, F, G, N, P, R, S, T, U, V
CD19	4G7-2E3■	FAB4867-A, C, F, G, N, P, R, S, T, U, V
CD20	396444	FAB4225-G, N, P, R, S, T, U, V
CD25/IL-2 Rα	24212	FAB1020-A, G, N, P, R, S, T, U, V
CD45	2D1	FAB1430-A, C, G, N, P, R, S, T, U, V
CD56/NCAM-1	301040	FAB2408-A, G, N, P, R, S, T, U, V
CD62L/L-Selectin	4G8	FAB9787-G, R, T
CD63	460305	IC5048-G, N, P, R, S, T, U, V

Markers	Clone	Fluorochrome-conjugated Abs
CD66b/CEACAM-8	913542■	FAB4246-A, G, N, P, R, S, T, U, V
CD68/SR-D1	298807	IC20401-A, F, G, N, P, R, S, T, U, V
CD69	298614	FAB23591-A, G, N, P, R, S, T, U, V
CD80/B7-1	37711	FAB140-F, G, N, P, R, S, T, U, V
CD86/B7-2	37301	FAB141-A, C, F, G, N, P, R, S, T, U, V
CD115/M-CSF R	61708	FAB329-A, F, G, N, P, R, S, T, U, V
CD117/c-kit	47233	FAB332-A, G, N, P, R, S, T, U, V
CD123/IL-3 Rα	32703	FAB301-A, C, G, N, P, R, S, T, U, V
CD127/IL-7 Rα	40131	FAB306-A, G, N, P, R, S, T, U, V
CD141/BDCA-3	501733	FAB3947-A, G, N, R, S, T, U, V
CD163	215927	FAB1607-A, C, G, N, R, S, T, U, V
CD172/SIRPα	602411	FAB4546-G, N, P, R, S, T, U, V
CD206/MMR	685641	FAB25342-A, G, N, P, R, S, T, U, V
CLEC9a	683409	FAB6049-A, G, N, R, S, T, U, V
CRTH-2	301109	FAB33381-A, G, N, P, R, S, T, U, V
CXCR3	49801■	FAB160--A, C, F, G, N, P, R, S, T, U, V
CXC3CR1	528728	FAB5204-P
Fc εRIα	773704	FAB6678-C, G, N, R, S, T, U, V
HLA-DR	L203	FAB4869-A, C, F, G, N, P, R, S, T, U, V
Neuropilin-1/BDCA-4	446921	FAB3870-A, F, G, N, P, R, S, T, U, V
NKp44/NCR2	253415	FAB22491--A, G, N, P, R, S, T, U, V
XCR1	1097A■	FAB8571-G, N, P, R, S, T, U, V

*해당 클론은 HLDA에서 CD 지정을 위해 사용되었습니다.

■ 해당 항체는 동일한 Clone으로 Recombinant monoclonal antibody 제품도 있습니다.

Fluorochrome Key Guide:

A Allophycocyanin, C PerCP, F Fluorescein, G Alexa Fluor®488, N Alexa Fluor 700, P Phycoerythrin, R Alexa Fluor 647, S Alexa Fluor 750, T Alexa Fluor 594, U Alexa Fluor 350, V Alexa Fluor 405

Transcription Factors	Clone	Fluorochrome-conjugated Abs
EOMES	644730	IC6166-A, G, N, R, S, T, U, V
FoxP3	1054C■	IC8214-A, G, N, P, S, T, U, V
	376209R■	IC8970-G, N, R, S, T, U, V
GATA-3	634919	IC63301-A, T
	291106	IC26051-P
PU.1	732322	IC5870-G, N, R, S, T, U, V
RORγmat	1181A	IC9125-A, G, N, R, S, T, U, V
	600380	IC6006-A, C, P
T-bet	525803	IC5385-C, F, G, N, R, S, T, U, V
	525831■	IC53851-G, N, R, S, T, U, V

Cell Markers Guide for Human Immune Cell Characterization by Flow Cytometry

