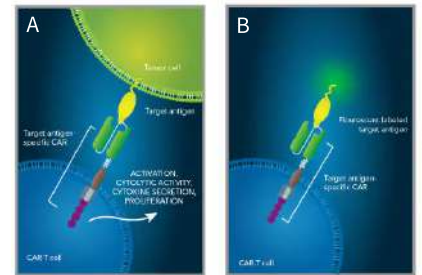


Fluorescent Labeled Recombinant Proteins for CAR-T Cells & Covid-19



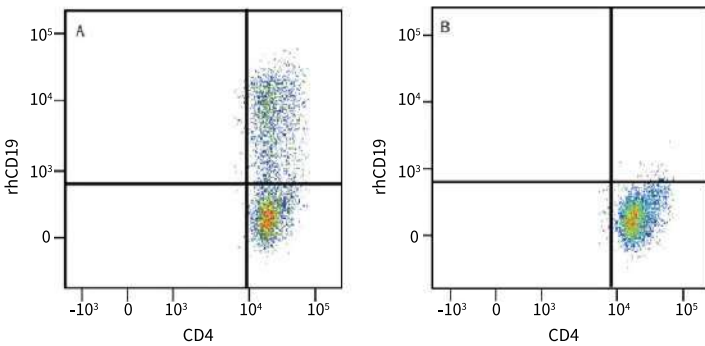
Fluorescent-Labeled Recombinant Proteins, 왜 사용해야 할까요?

- Protein에 형광물질이 direct로 conjugation된 제품
- Antibody에 의한 background 없이 실험 가능
- 2nd antibody 사용 x → 실험 시간 단축
- Unconjugated protein과 동일한 binding activity



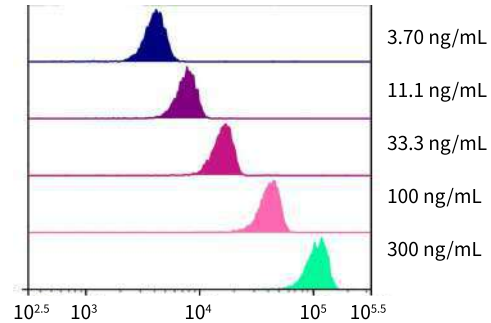
A. CAR-T cell의 원리
B. Fluorescent-Labeled Proteins의 원리

CD19 CAR-T Detection 확인 Data



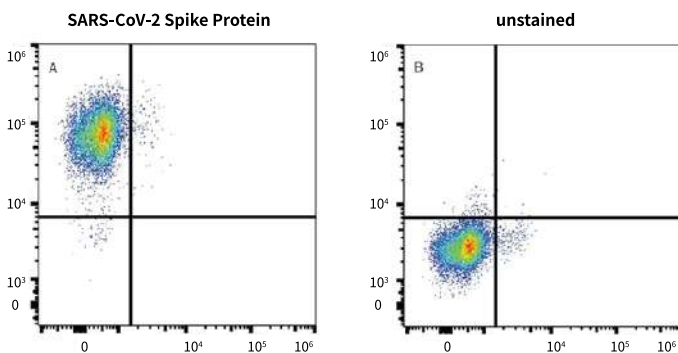
Detect: Human CD19 Fc Chimera Atto 647N Protein (Cat# ATM9269)

Flow Cytometry Data



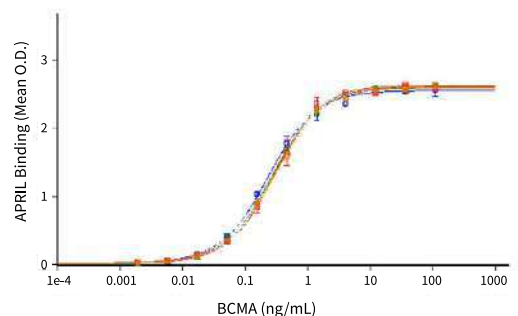
Capture:
Streptavidin beads - biotinylated anti-human ErbB2/Her2
Detection:
Human ErbB2/Her2 Alexa Fluor® 647 (Catalog # AFR1129)

SARS-CoV-2 – ACE-2 Binding Test



Detect: SARS-CoV-2 Spike His-tag Alexa Fluor 488 Protein (Cat# AFG10561)

Lot-to-Lot Consistency



Fluorescent

Labeled Recombinant Proteins

for CAR-T Cells & Covid-19

제품 List for CAR-T Cells

| Protein | Fluorescent Label | Catalog # | Protein | Fluorescent Label | Catalog # |
|---------------|-------------------|-----------|-----------------|-------------------|-----------|
| BCMA | Alexa Fluor® 488 | AFG193 | Mesothelin | Alexa Fluor® 488 | AFG3265 |
| | Alexa Fluor® 647 | AFR193 | | Alexa Fluor® 647 | AFR3265 |
| | Atto 488 | ATJ193 | MUC-1 | Alexa Fluor® 488 | AFG10332 |
| | Atto 647N | ATM193 | | Alexa Fluor® 647 | AFR10332 |
| CD19 | Alexa Fluor® 488 | AFG9269 | OX40 | Alexa Fluor® 488 | AFG3388 |
| | Alexa Fluor® 647 | AFR9269 | | Alexa Fluor® 647 | AFR3388 |
| | Atto 488 | ATJ9269 | Siglec-2 / CD22 | Atto 488 | ATJ1968 |
| | Atto 647N | ATM9269 | | Atto 647N | ATM1968 |
| EMMPRIN/CD147 | Alexa Fluor® 488 | AFG972 | Siglec-3 / CD33 | Alexa Fluor® 488 | AFG1137 |
| | Alexa Fluor® 647 | AFR972 | | Alexa Fluor® 647 | AFR1137 |
| CD300e | Alexa Fluor® 488 | AFG10479 | | Atto 488 | ATJ1137 |
| | Alexa Fluor® 647 | AFR10479 | | Atto 647N | ATM1137 |
| ErbB2/Her2 | Alexa Fluor® 488 | AFG1129 | TSLPR | Alexa Fluor® 488 | AFG981 |
| | Alexa Fluor® 647 | AFR1129 | | Alexa Fluor® 647 | AFR981 |
| PD-1 | Alexa Fluor® 488 | AFG1086 | | | |
| | Alexa Fluor® 647 | AFR1086 | | | |



제품 List for SARS-CoV-2

| Variant | Fluorescent Label | Catalog # | Variant | Fluorescent Label | Catalog # |
|----------------------|-------------------|-----------|---------------------|-------------------|-----------|
| SARS-CoV-2 | Alexa Fluor® 488 | AFG10561 | Delta (B.1.617.2) | Alexa Fluor® 488 | AFG10878 |
| | Alexa Fluor® 647 | AFR10561 | | Alexa Fluor® 647 | AFR10878 |
| SARS-CoV-2 Spike RBD | Alexa Fluor® 488 | AFG10500 | Kappa (B.1.617.1) | Alexa Fluor® 488 | AFG10861 |
| | Alexa Fluor® 647 | AFR10500 | | Alexa Fluor® 647 | AFR10861 |
| Alpha (B.1.1.7) | Alexa Fluor® 488 | AFG10796 | Omicron (B.1.1.529) | Alexa Fluor® 488 | AFG11060 |
| | Alexa Fluor® 647 | AFR10796 | | Alexa Fluor® 647 | AFR11060 |
| Beta (B.1.351) | Alexa Fluor® 488 | AFG10786 | | Alexa Fluor® 488 | AFG11061 |
| | Alexa Fluor® 647 | AFR10786 | | Alexa Fluor® 647 | AFR11061 |
| Gamma (P.1) | Alexa Fluor® 488 | AFG10795 | | Alexa Fluor® 488 | AFG11056 |
| | Alexa Fluor® 647 | AFR10795 | | Alexa Fluor® 647 | AFR11056 |
| | | | ACE-2 | Alexa Fluor® 488 | AFG933 |
| | | | | Alexa Fluor® 647 | AFR933 |