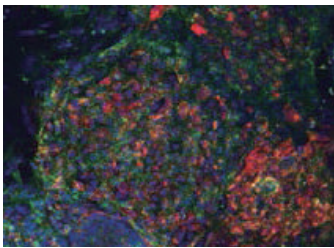


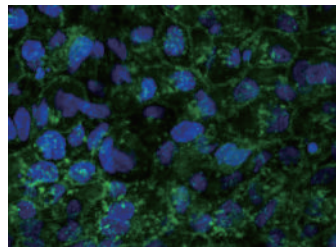
# iPSC / ESC 분화능 확인하는 방법!

## 1. GloLIVE

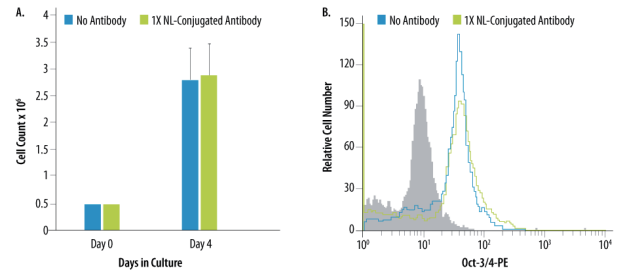
- 살아있는 Cell에서 30분만에 분화능 확인 가능!
- 분화능이 확인된 Cell을 바로 Picking 해서 Sub Culture 가능!



Human iPSC Culture 후  
GloLive를 이용해서 iPS분화능 확인  
TRA-1-60 / SSEA-4 / Hoechst 33342



살아있는 BG01V Cell Staining  
SSEA-4 / Hoechst 33342

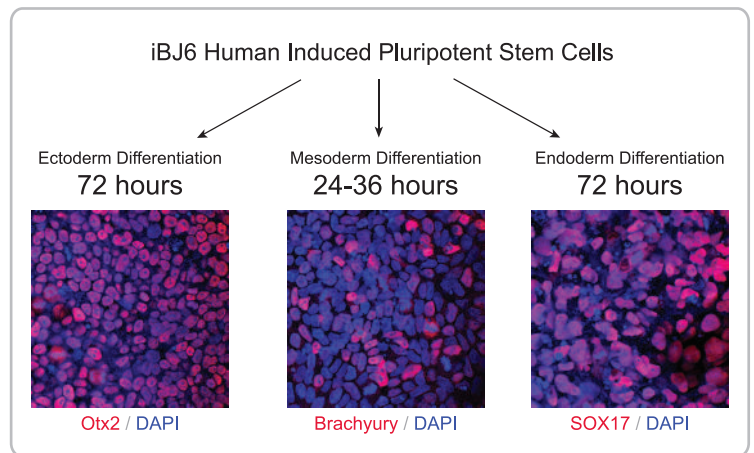
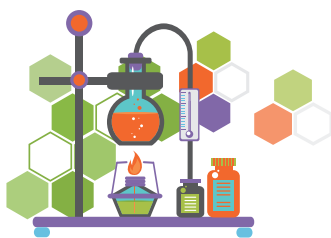


GloLive Antibody를 처리해도 Cell Proliferation에는 전혀 문제가 없습니다!

| Marker      | Human Stem Cells | Mouse Stem Cells | Conjugated to NL493 (green) | Conjugated to NL557 (red) |
|-------------|------------------|------------------|-----------------------------|---------------------------|
| SSEA-1      | Negative Marker  | Positive Marker  | NLLC2155G                   | NLLC2155R                 |
| SSEA-4      | Positive Marker  | Negative Marker  | NLLC1435G                   | NLLC1435R                 |
| TRA-1-60(R) | Positive Marker  | Not applicable   | NLLC4770G                   | NLLC4770R                 |
| TRA-1-81    | Positive Marker  | Not applicable   | NLLC16581G                  | NLLC16581R                |

## 2. Functional Identification Kit (cat#SC027)

- 분화에서 확인까지 단 5일!
- 번거로운 Teratoma 대신 간편한 ICC로 확인!



## 3. Human Pluripotent Stem Cell Array Kit (cat#ARY010)

- Cell Lysate 50µg으로 실험 가능
- 하나의 Sample에서 15개의 Protein 발현유무 확인
- Western Blot Set Up된 실험실이라면 별도의 장비 없이 바로 실험 가능

