

Immuno-Oncology

Research by AIM Chip

Simplicity

simply-designed tools compliant with standard cell culture laboratories

Scalability

From a few experimental tests to high-throughput screening

Efficiency

Insightful results in a fractional time and cost of comparable animal work

Biological relevance

Human-focused models recapitulate the uniquely human microenvironment

Mimic complexity

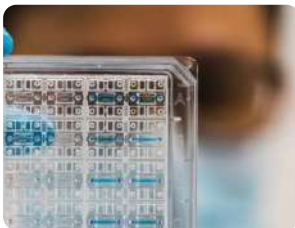
Model the interplay between controlling cells and environmental cues

"Because human data can't wait for clinical trials."

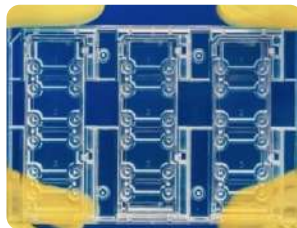
- 01 Tumor Micro-Environment 조성
- 02 다양한 co-culture 가능
- 03 Fluidic 조건 가능
- 04 1개부터 40개 샘플 platform 가능
- 05 Chip 내 Media로 Cytokine 분석 가능
- 06 Chip 내 Cell 샘플로 Western blot 가능



for 관련 상담 견적/ 세미나 요청



idenTx 3 Chip



idenTx 9 Plate



idenTx 40 Plate



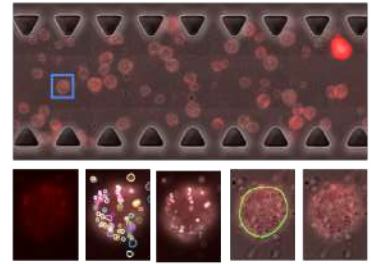
Organix Plate

Cancer Spheroid Profiling

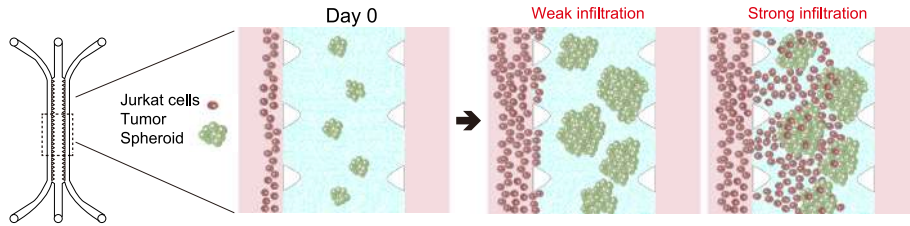
→ Immune checkpoint assay for PD-1/ PD-L1



논문 정보

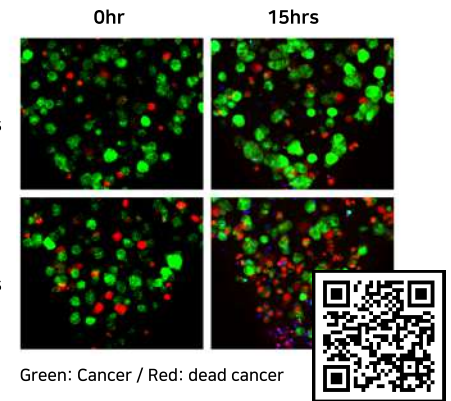
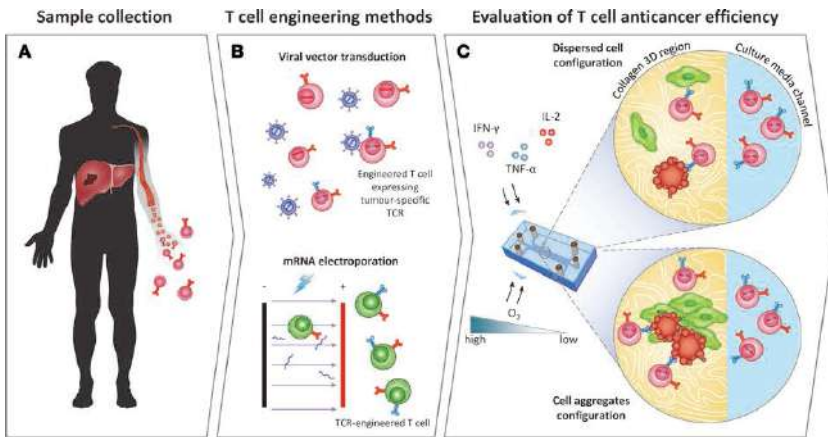


→ Immune cell Infiltration assay



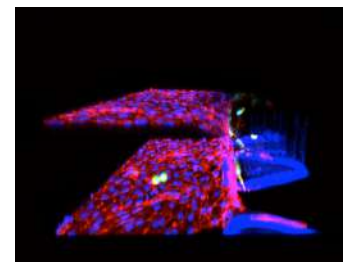
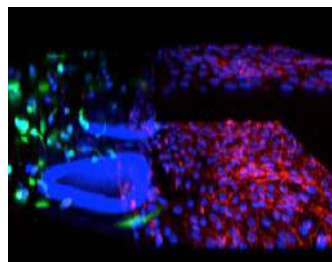
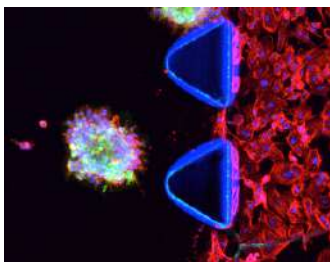
논문 정보

Killing Efficiency assay for adoptive cell therapy



논문 정보

Metastasis assay



Dissemination

Intravasation

Extravasation

