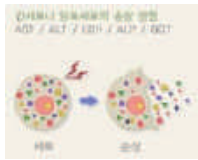


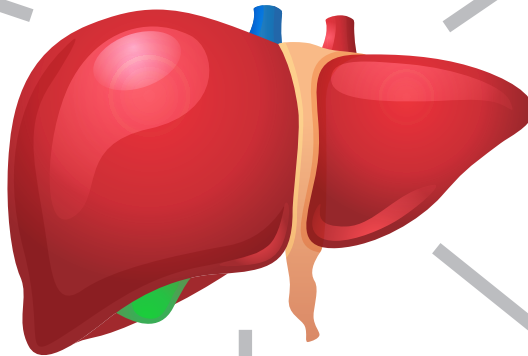
+ Fresh mouse/ rat Hepatocyte



간 독성 평가



간염 virus 연구



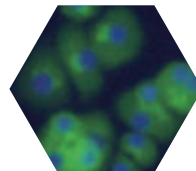
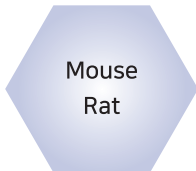
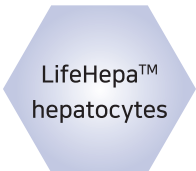
당뇨 대사 연구



지방간 연구

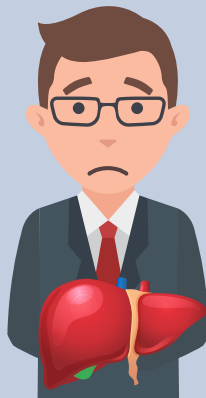


기능성 식품 연구

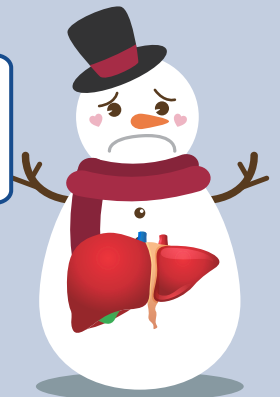


간세포는 2×10^7 이면
충분한데

직접 분리하려니 번거롭고
비용도 만만치 않군

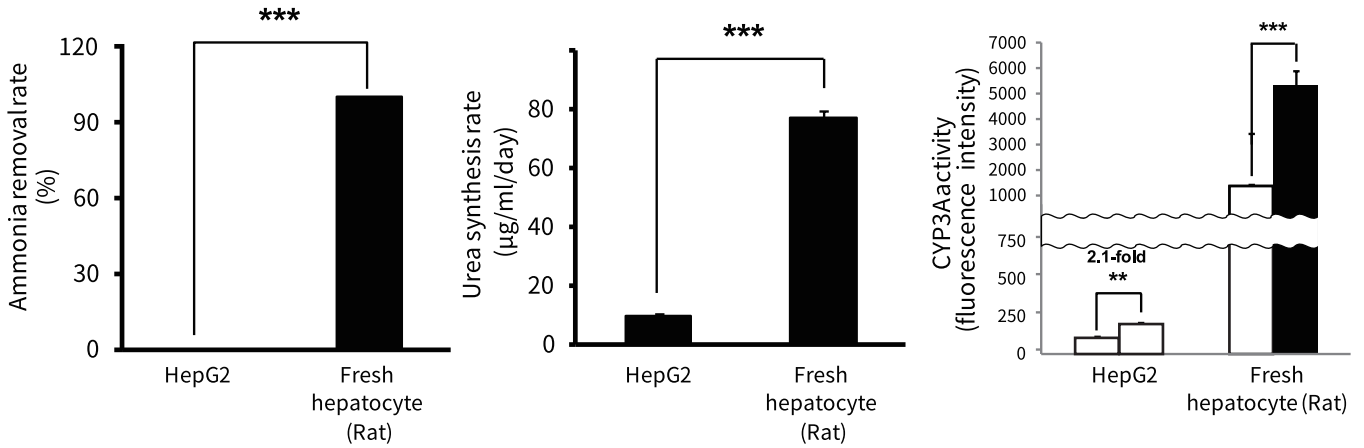


간세포는 증식도 안되고
동결도 힘들어 ㅠㅠ

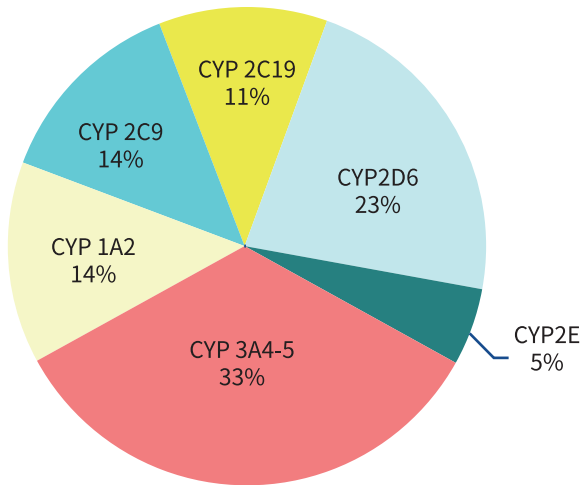


LifeHepa™ Mouse / Rat Hepatocytes

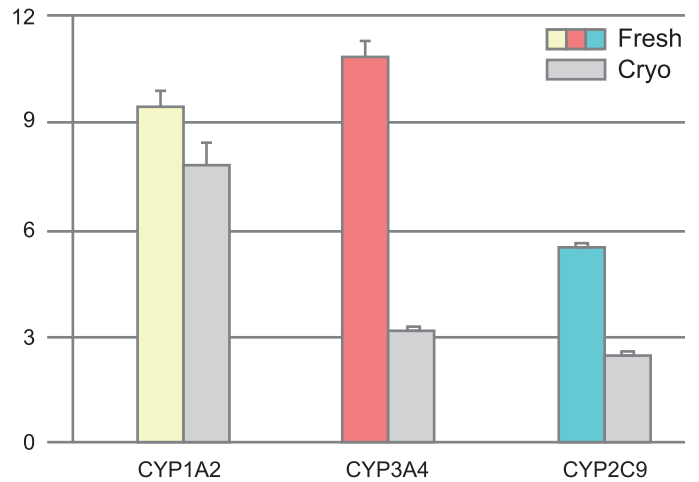
HepG2 vs Fresh rat hepatocyte 비교 실험



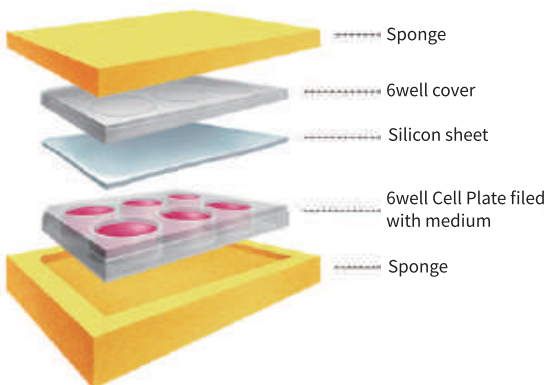
CYP % for drug metabolism



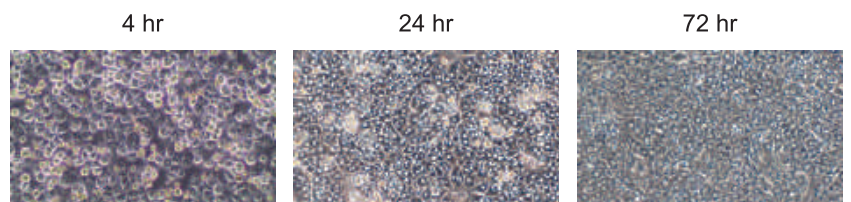
*간세포 기능 비교



Hepatocyte	Fresh	Cryo
CYP1A2	9.4±0.4	7.8±0.6
CYP2C9	5.5±0.1	2.5±0.09
CYP3A4	10.87±0.4	3.16±0.08



장점: 최상의 생존율, 동결 등에 의한 CYP enzyme 손상이 없음
상온 3~4시간 안정 / 쿼 배송가능(냉장 배송)



Rat primary hepatocyte의 단층배양형태