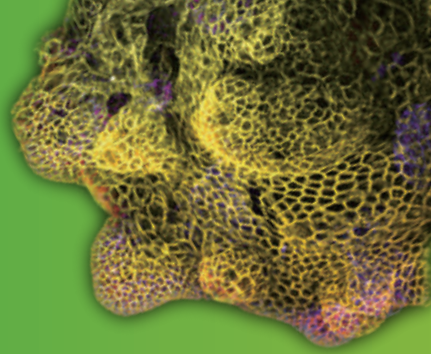


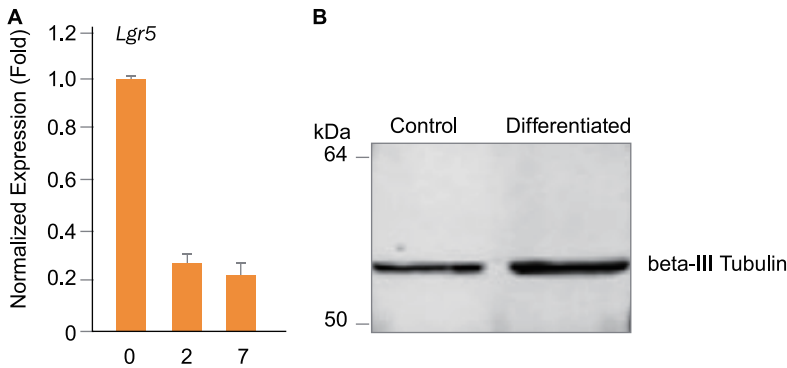
Organoid도

손쉽게 **Harvest** 하자!



Cultrex® Organoid Harvesting Solution

- for Passing or Biochemical analysis
- non- Enzymatic method
- Ready - to - use



Name	Size	Catalog #
Cultrex® Organoid Harvesting Solution	100 ml	3700-100-01

Techniques. Mouse small intestine organoid pellets were harvested at days 0, 2, and 7 of differentiation using Cultrex Organoid Harvesting Solution (Catalog # 3700-100-01). (A) Harvested organoids were resuspended in TRIzol®, extracted for RNA, and analyzed for expression of Lgr5 using qPCR. As expected, a decrease in Lgr5 expression was detected between days 0 and 7 of differentiation. (B) Harvested organoids were resuspended in RIPA buffer for total lysate preparation. Lysates from control and differentiated organoids were analyzed by Western blot for beta-III Tubulin expression.

Cultrex® Organoid Harvesting Solution is Compatible with Biochemical Analysis

3-D Gastro. Tissue Culture Kit

MimEX™ GI

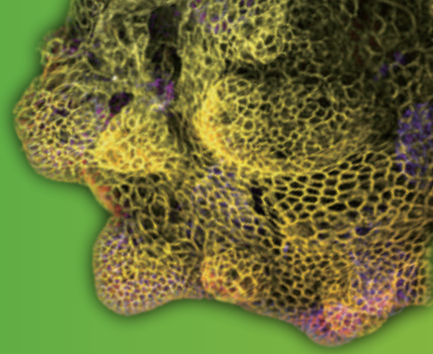
TISSUE MODEL SYSTEMS

- Disease 모델 구현
- 약물독성, 흡수 및 신진대사 연구
- 크론병, 과민성 장 증후군, Microbiome, Gastrointestinal cancer, Metastasis 연구

	MimEX™ GI Starter Kit	MimEX™ GI Expansion Media	MimEX™ GI Differentiation Media	MimEX™ Irradiated Fibroblast Kit	MimEX™ Human Descending Colon Adult Stem Cells	MimEX™ Tissue Processing Kit
Catalog #	MIM002	MIM003	MIM004	MIM005	MIM006	MIM001

BME Type 2 / BME Type R1

Organoid Culture Matrix 추천!

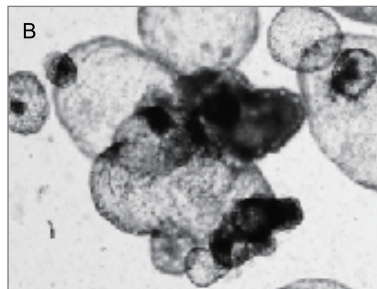
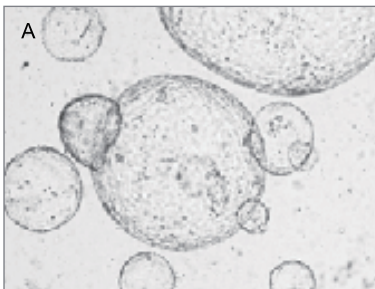


- 타사 대비 **High Concentration**: 12- 18mg/mL
- 낮은 **Endotoxin Level**: ≤ 1.5 EU/mL by LAL Assay

Name	Size	Catalog #
Cultrex® Basement Membrane Extract Type2	1 ml	3532-001-02
	5 ml	3532-005-02
	2 x 5 ml	3532-010-02
Cultrex® Reduced Growth Factor Basement Membrane Extract Type2	1 ml	3533-001-02
	5 ml	3533-005-02
	2 x 5 ml	3533-010-02
Cultrex® Reduced Growth Factor Basement Membrane Extract, Type R1	1 ml	3433-001-R1
	5 ml	3433-005-R1
	2 x 5 ml	3433-010-R1

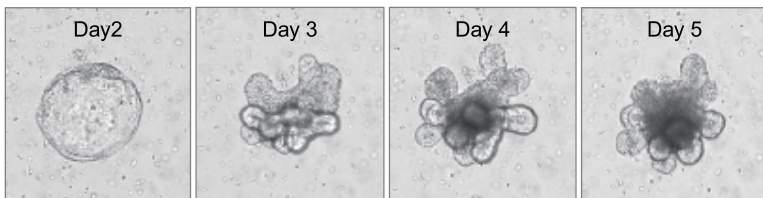
Cultrex BME Selection Chart			
NAME	BUFFER	CONCENTRATION	RECOMMENDED APPLICATIONS
Cultrex® Original BME	DMEM	12-18mg/ml	General (2D Culture, 3-D Culture, Attachment, Invasion, etc.)
Cultrex® Stem Cell Qualified BME	DMEM	12-18mg/ml	Attachment and Maintenance of Stem Cells
Cultrex® 3-D Culture Matrix™ BME	DMEM	14-16mg/ml	3-D Culture
Cultrex® BME, Type 3	RPMI1640	12-18mg/ml	Xenograft/Tumorgraft
*Cultrex® Organoid Qualified BME, Type 2	DMEM	12-18mg/ml	Robust Organoid Culture
*Cultrex® Organoid Qualified BME, Type R1	DMEM	12-18mg/ml	Difficult to Grow Organoid Culture

*Organoid culture 용으로 추천제품: 특히 BME, TypeR1은 entactin 함유량이 많아 tissue 및 organoid를 culture 하는데 적합



Human Pancreatic Organoids Cultured in Cultrex® Reduced Growth Factor BME, Type 2.

Human pancreatic progenitor cells were cultured in Cultrex RGF BME, Type 2 (Catalog # 3533-001-02) and were differentiated into pancreatic organoids.



Growth of Mouse Colon Organoids in Cultrex® Reduced Growth Factor BME, Type R1.

Mouse colon organoids were embedded in Cultrex RGF BME, Type R1 (Catalog #3433-001-R1) and cultured for 5 days. Brightfield images show the progression of organoid formation (Day 1 - 5) after passage.