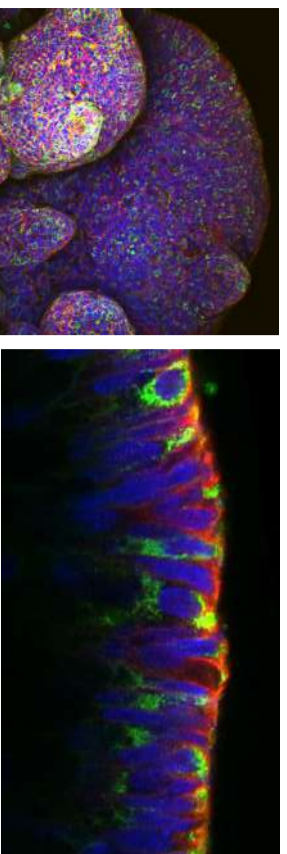
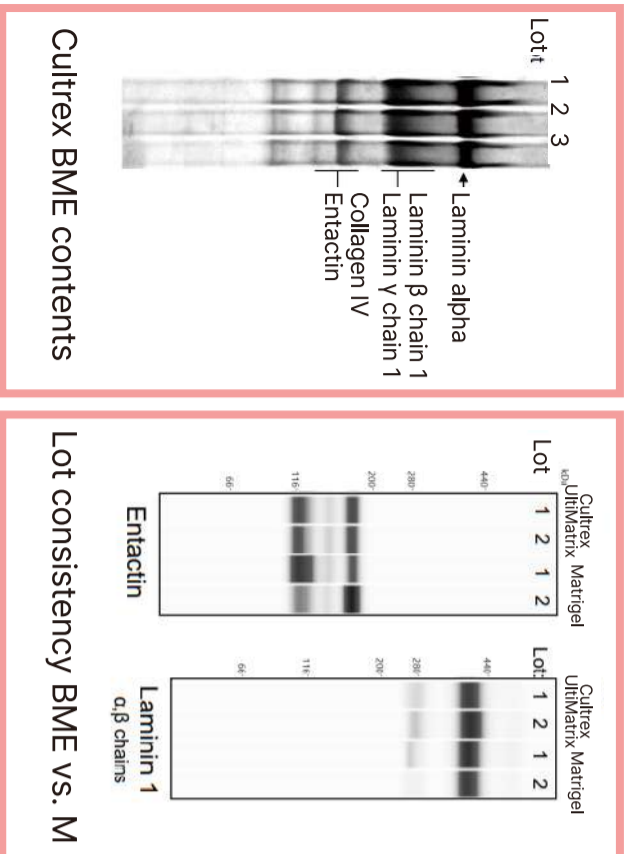


Organoid Culture Matrix 3형제

Matrigel? 이젠 Cultrex™ BME!

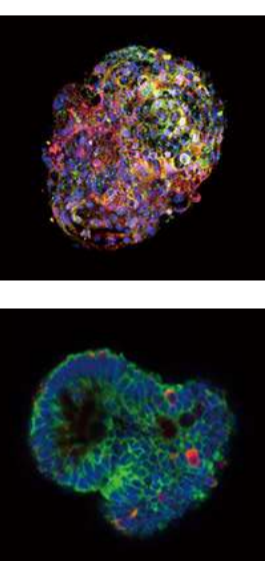
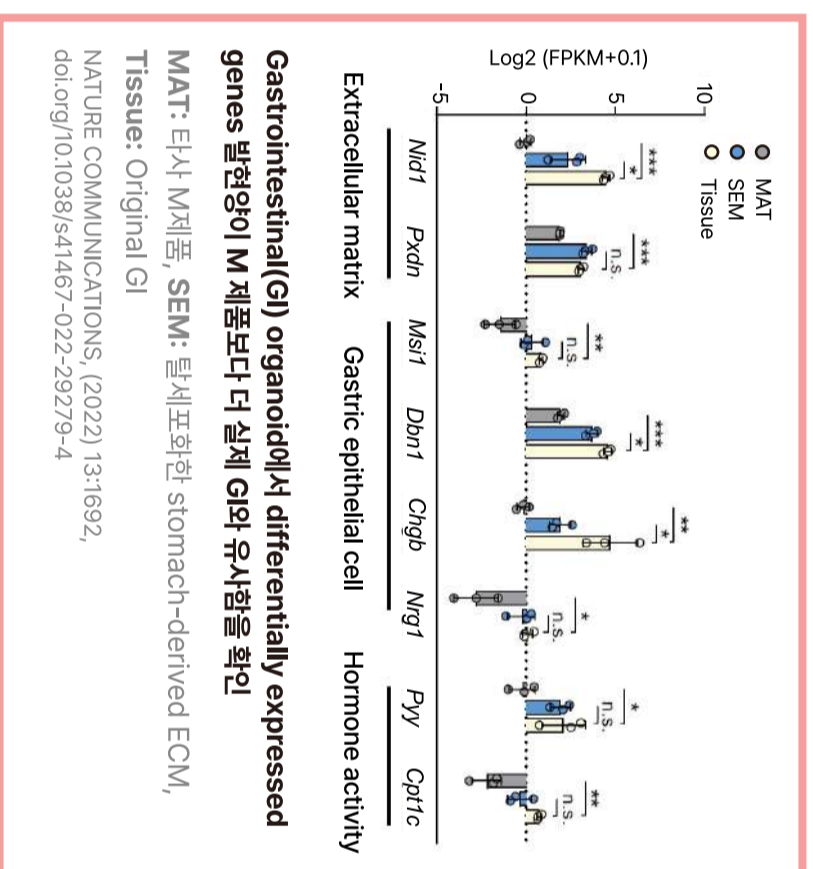
- Matrigel과 동일한 성분의 제품을 포함, application에 맞게 다양한 제품 출시
- Lot to lot consistency
- 안정적인 수급
- Pathclear; 31개 organism/virus, 17개 bacteria, 13개 infectious agent에 대한 PCR 실험 완료
- USP <71>; sterility guideline 준수



Colon organoid in Cultrex BME

Organ-specific hydrogel, Regenix™!

- 사람과 가장 유사한 porcine-derived ECM
- 실제 장기의 미세환경과 유사한 성분 구성
- 탈세포 기술로 면역원성 완벽 제거
- Liver, Intestine, Lung, Heart, Kidney

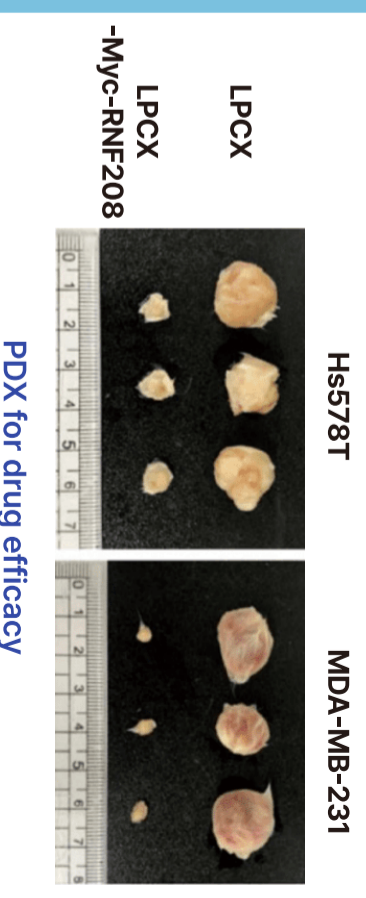
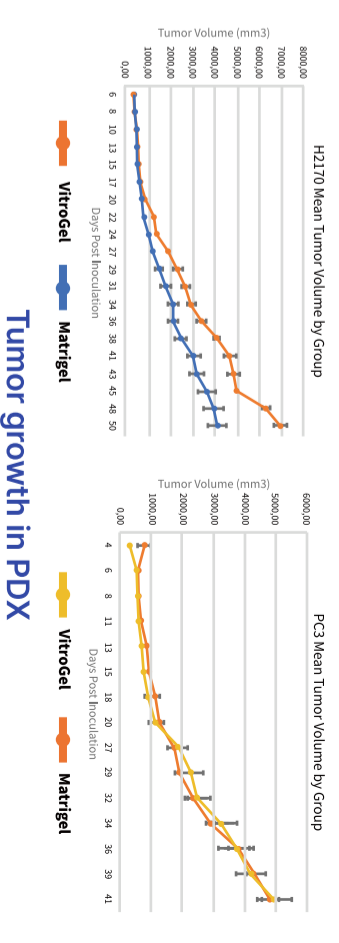


Liver

Intestine

Xeno-free hydrogel, VitroGel®!

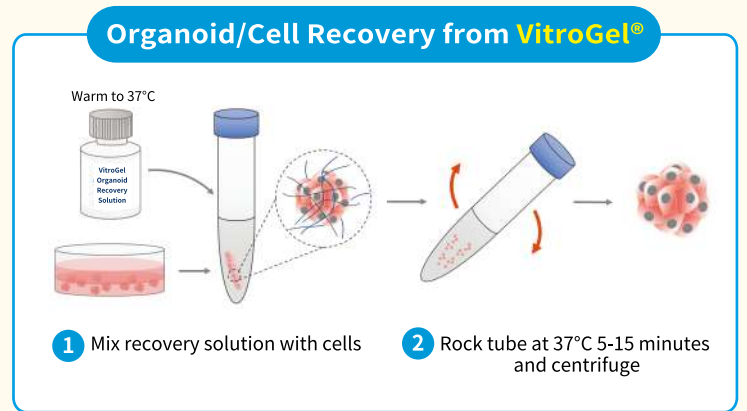
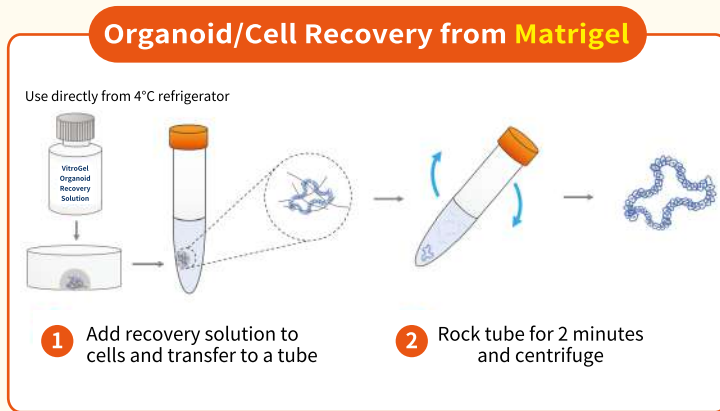
- 동물 유래 성분 x
- Injectable hydrogel
- 상온에서 액체로 존재 → 얼음 없이 바로 실험 가능
- CDX, PDX 최적화



VitroGel® Organoid Harvesting Solution

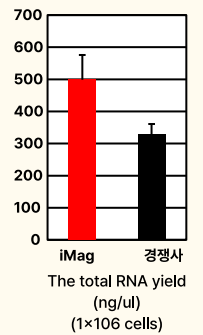
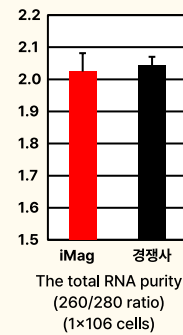
- Fast ECM Dissociation – Matrigel에서 키운 organoid/cell도 2분 안에 dissociation 완료
- High yield – 조금의 ECM도 남김없이 제거
- Safe harvesting
– 손상 없는 완벽한 organoid harvesting
- RT operation – 상온에서도 안정! 얼음 필요 x

	VitroGel	Company C	Company R	Company S
Dissociation From Animal-based ECM	2 min	~60 min	~60 min	>30 min
High Cell Recovery & Cell Viability	●	●	●	●
Room Temp Operation/Easy-to-Use	●			●
Cell Recovery from 2D ECM Coating Plate	●			
No Cold Pack Shipping	●			●
Storage	2-30°C	2-8 °C	2-8 °C	15-35 °C
Shelf Life	12 mo	3 mo	2 mo	N/A



DNA/RNA isolation kit from organoid, microMag®

- Easy to use!
TRIzol, centrifuge, spin column 모두 불필요
- Matrigel 제거 과정 불필요
organoid culture 상태 그대로 실험 가능
- Tissue 분쇄 과정 불필요
- 획기적인 running time – 5~8min



		Next&Bio, Inc.	Competitor 1	Competitor 2
Major Competitiveness	Run Time (≤ 10 Samples)	5 ~ 8 min	20 ~ 30 min	~ 30 min
	Yield	350-400 ng/uL (1 x 10 ⁶ cells)	350-400 ng/uL (1 x 10 ⁶ cells)	500 ug / 100 mg tissue
User-friendliness	Tissue grinding	Unnecessary	Necessary	Necessary
	Spin column		Necessary	Necessary
	Centrifuge		Necessary	Necessary
	TRIzol		Unnecessary	Necessary
	Discarding of the Matrigel (Organoid)		No data	No data
Purity		A260/A280 = 1.9 ~ 2.0	A260/A280 = 1.9 ~ 2.1	A260/A280 = 1.8 ~ 2.2
RIN		9 ~ 10	9 ~ 10	9 ~ 10
For In vitro Diagnostic Use		Yes	Yes	Yes
Sample amounts (Capacity)		10 ~ 1 x 10 ⁷ cells,	10 ~ 1 x 10 ⁷ cells,	~ 1 x 10 ⁷ cells,
		or 2 ~ 5 mg tissue	or 0.5 ~ 30 mg tissue	or ~ 100 mg tissue