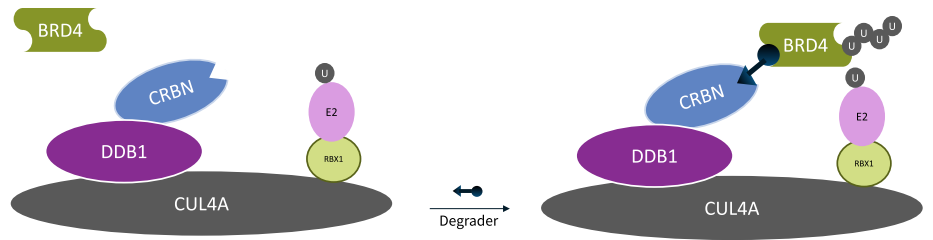
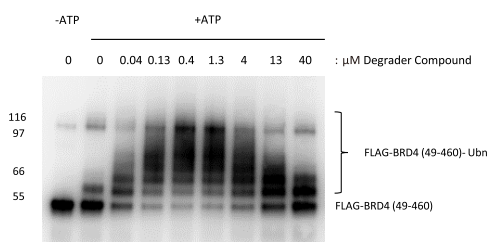


## ▶ In Vitro Ubiquitination Assay

- Ubiquitin Proteasome System (UPS) 연구의 선도적 기업 Boston Biochem
- Substrate Protein 의 Ubiquitin 여부 확인 연구
- 타겟단백질이 Degradator 의 존재하에 Ubiquitin화가 되는지 확인할 수 있는 강력한 방법!
- 타겟 단백질 분해 연구에 필수 연구!

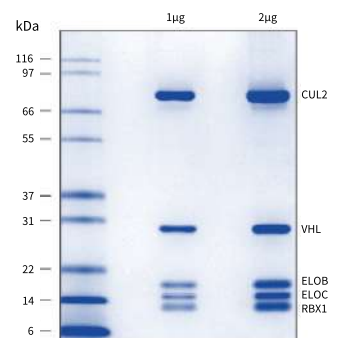


Degradator-dependent polyubiquitination of recombinant BRD4. The so-called “hook effect” is clearly evident.

ASSAY COMPONENT	PRODUCT NAME	CATALOG NUMBER
E3 Ligase Complex	Human CUL4/RBX1/DDB1/CRBN	E3-650
E2 enzyme	Human UBE2D1	E2-616
E1 enzyme	Human UBE1	E-304
Ubiquitin	Human Ubiquitin	U-100H
ATP	ATP Disodium Salt	Tocris #3245
BRD4 Substrate	Human His10-FLAG-BRD4 (49-460)	SP-600
Degradator	AKE-212	-

## ▶ E3 Liagase Enzymes

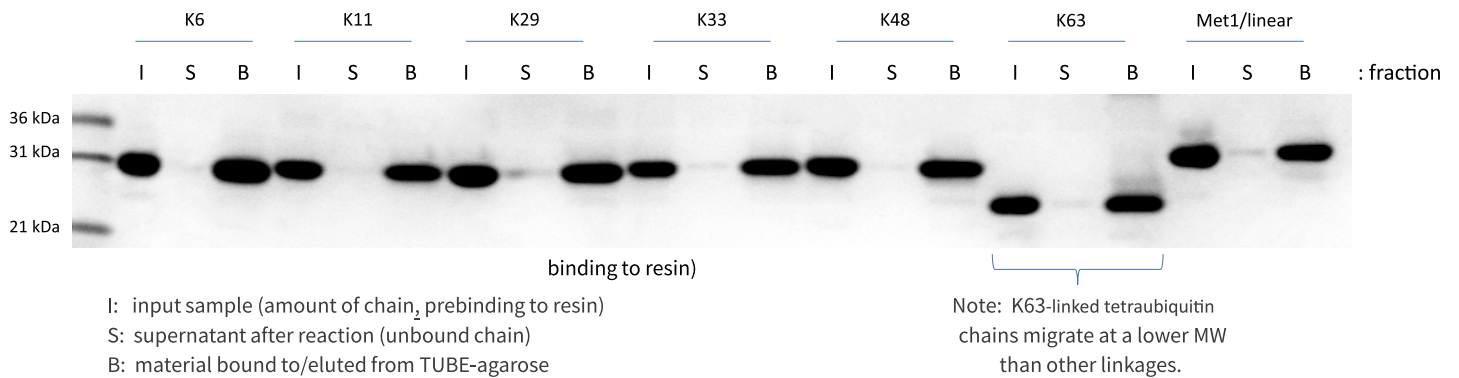
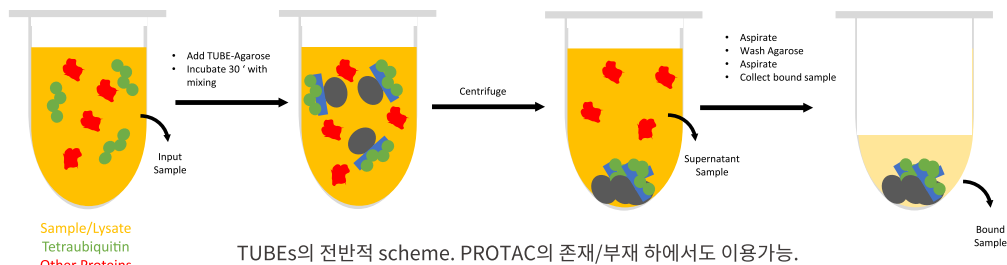
PRODUCT NAME	CATALOG NUMBER	PRODUCT NAME	CATALOG NUMBER
CUL1/RBX1	E3-410	SKP1/FBXO7	E3-525
CUL2/RBX1	E3-420	SKP1/FBXO7/CUL1/RBX1	E3-526
CUL3/RBX2	E3-430	ELOB/ELOC/VHL	E3-600
CUL4A/RBX1	E3-440	CUL2/RBX1/ELOB/ELOC/VHL	E3-655
CUL5/RBX2	E3-450	RNF114	E3-304
DDB1	E3-501	MDM2	E3-204
DDB1/CRBN	E3-500	CUL1(NEDD8)/RBX1	E3-411
CUL4A/RBX1/DDB1/CRBN	E3-650	CUL2(NEDD8)/RBX1	E3-421
DDB1/DCAF16	E3-502	CUL3(NEDD8)/RBX1	E3-431
DDB1/DCAF8	E3-503	CUL4(NEDD8)/RBX1	E3-441
SKP1/SKP2	E3-521	CUL5(NEDD8)/RBX2	E3-451



SDS-PAGE gel stained with colloidal Coomassie blue with 1 µg and 2 µg loading of CUL2/ RBX1/ELOB/ ELOC/VHL (Cat. No. E3-655)

## ▶ Tandem Ubiquitin Binding Entities (TUBEs)

- Ubiquitin 단백질의 분리 및 Identification 을 위한 assay
- 단일 Ubiquitin화 단백질 보다 poly Ubiquitin화 단백질 검출에 탁월
- Low level 검출 가능



TANDEM UBIQUITIN BINDING ENTITIES	
PRODUCT NAME	CATALOG NUMBER
Recombinant Human Ubiquilin 1 Tandem UBA (TUBE2) Agarose	AM-130-250
Recombinant Human HR23A Tandem UBA (TUBE1) Agarose	AM-125-250
Recombinant Human His6-Ubiquilin 1 Tandem UBA (TUBE2)	UBE-110-250
Recombinant Human Ubiquilin 1 Tandem UBA (TUBE2) Biotin	UBE-115-250
Recombinant Human His6-HR23A/Rad23A Tandem UBA (TUBE1)	UBE-210-250
Recombinant Human HR23A/Rad23A Tandem UBA (TUBE1) Biotin	UBE-215-250
Recombinant Human His6-Fluorescein-Tandem UBA (TUBE1)	UBE-212-100

### Assay Tools for TPD

SIMPLE WESTERN™  
GEL-FREE, BLOT-FREE, HANDS-FREE WESTERN BLOTS

**WES / JESS**

- 일반 WB보다 8배 높은 감도
- 적은 샘플량 및 Ab 사용량
- 로딩부터 결과까지 3시간
- Full 자동화

### ▶ PROTAC

- Active Degradator\_완제품 PROTAC 이용 가능
- dTAG/aTAG 이용 가능
- 내가 원하는 PROTAC 디자인 가능\_Degradator Building Blocks
- Customizing 가능

Select E3 Ligase Ligand + exit vector

- Thiolamide 4'-oxycarbonyl
- Thiolamide 4'
- Thiolamide 5'-amide
- Lactaldimide 4'
- Paraldimide 4'
- 4-((1R)-1-aminocyclohex-1-en-1-yl)pyridin-2(1H)-one
- UCL 161 (Hydrazide)
- M4 030 (amide)
- M1 022 (amide)

+

Select Linkers

- PEG3
- PEG4
- PEG5
- PEG6
- alkylC1
- alkylC2
- alkylC3
- alkylC4
- alkylC6
- alkylC8
- alkylC9

+

Select Functional Group

- amine
- acid
- alkyne
- azide
- alcohol

=

Review structures

[Request Quote](#)