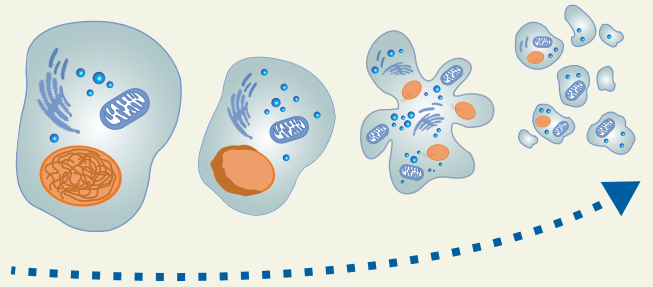


# Tools for Apoptosis

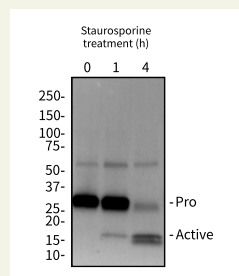
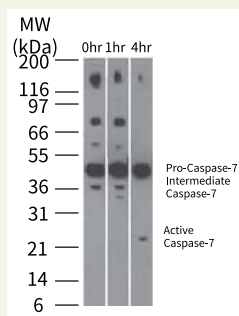
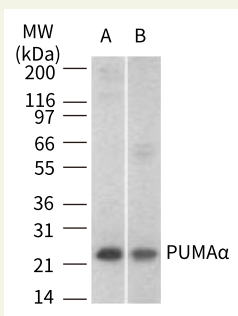


## 1. Antibodies for Apoptosis Pathway

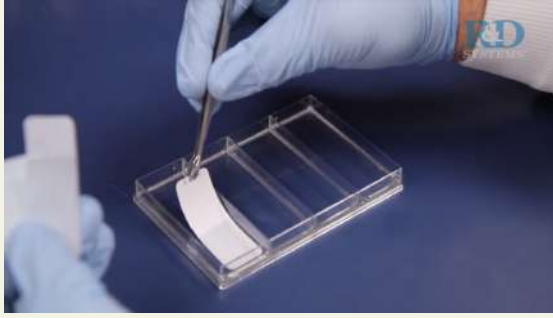
**R&D SYSTEMS** a biotechne brand **NOVUS BIOLOGICALS** a biotechne brand

Marker	Catalog #	Species	Clonality	Applications
Caspase-3 (Pro and Active)	NB100-56708	H M R +	Mono	WB, ICC, IHC, FC
Caspase-7 (Pro and Active)	NB100-56529	H M R	Mono	WB, IHC
Caspase-8 (Pro and Active)	NB100-56116	H M R +	Poly	WB, ICC, IHC, FC
Caspase-9 (Pro and Active)	NB100-56118	H M R +	Poly	WB, ICC, IHC, FC
TRAIL	NB100-56518	H +	Mono	WB, IHC
TRAILR1	NB100-56747	H	Mono	WB, ICC, FC
	NB100-56528	H M R	Mono	WB, ICC
TRAILR2	NB100-56618	H M	Poly	WB, ICC, IHC, FC
FAS	NBP2-81113	H	Mono	WB, ICC, FC, ELISA
FAS L	NBP1-97519	M	Mono	IHC, FC
	NBP3-09151	H	Mono	WB, ICC, FC
PARP (Cleaved)	NB100-56599	H M	Mono	WB, ICC, FC
Bax	NBP1-28566	H M R +	Mono	WB, IHC
Bak	NBP1-74026	H	Mono	WB, ICC, FC, ELISA
BID	NB100-56106	H M R +	Poly	WB, IHC
BAD	NB100-56080	H	Poly	WB, ICC, IHC, IP
PUMA	NBP1-76639	H R	Poly	WB, ICC, IHC, ELISA
	NB100-56370	H M	Poly	WB, IHC
NOXA	NBP3-07012	H M R	Mono	WB, ICC, IHC, FC
BIM	NBP1-76963	H M R	Poly	WB, ICC, IHC, ELISA
Bcl-2	NB100-56098	H M R +	Poly	WB, IHC
Bcl-XL	NB100-56104	H M R +	Poly	WB, IHC
MCL1	NB100-56146	H	Poly	WB, IHC
	NBP2-45773	H	Mono	WB, ICC, IHC, IP ,FC

Species – H: Human, M: Mouse, R: Rat, +:Others / Application – WB: Western blot, FC: Flow Cytometry



## 2. Antibody Array

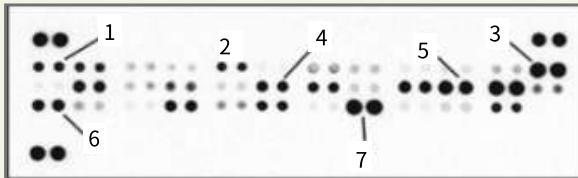


웅비 Assay Service

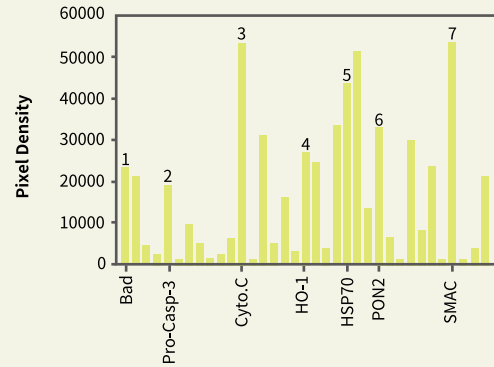


→ R&D kit 전용 Software

- Sample 50 uL로 동시 111개 analytes 확인 가능
- Antibody Array의 reference 중 91%가 R&D 제품
- 동시분석에 최적화된 antibody 사용
- Western blot 장비만으로 결과 도출



Sample: SK-Mel-28 human malignant melanoma cells  
Product: Human Apoptosis Array Kit (Cat# ARY009)



### Human Apoptosis Array Kit (35 analytes, ARY009)

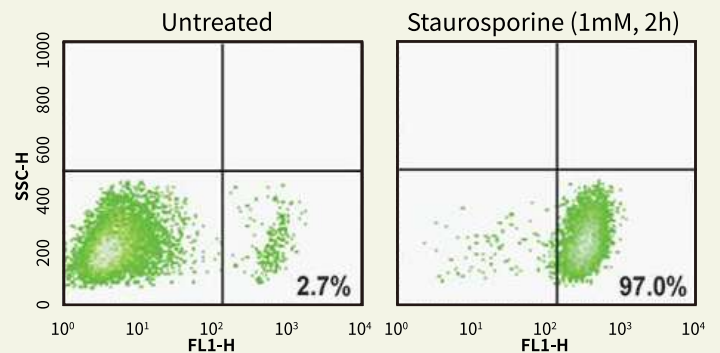
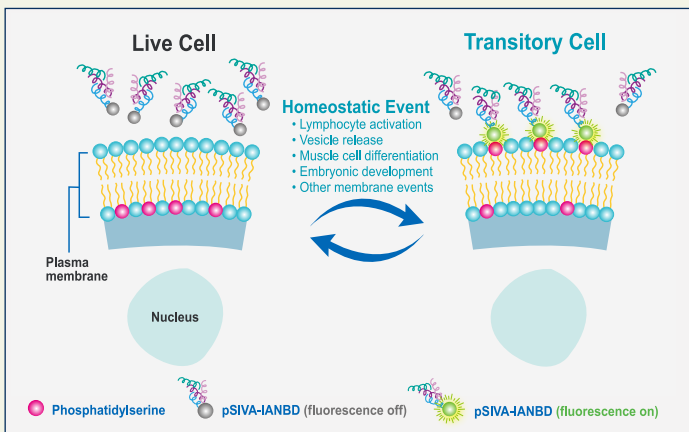
Bad	Bax	Bcl-2	Bcl-x	Pro-Caspase-3	Catalase	clAP-1	clAP-2	Claspin
Clusterin	Cytochrome c	TRAIL R1/DR4	TRAIL R2/DR5	FADD	Fas/TNFSF6	HIF-1α	HO-2/HMOX2	HSP27
HSP60	HSP70	HTRA2/Omi	Livin	PON2	p27/Kip1	SMAC/Diablo	Survivin	XIAP
Cleaved Caspase-3	Ho-1/HMOX1/HSP32	p21/CIP1/CDNK1A	Phospho-p53 (S15)	Phospho-p53 (S46)	Phospho-p53 (S392)	Phospho-Rad17 (S635)	TNF R1/TNFRSF1A	

### Mouse Apoptosis Array Kit(21 analytes, ARY031)

Bad	Bcl-2	Bcl-x	Cleaved Caspase-3	Catalase	Claspin	Cytochrome c	Fas	HIF-1α
HO-1/HSP32	HO-2/HMOX2	HSP27	HSP60	HSP70	MCL-1	p27/Kip1	p53	SMAC/Diablo
TNF R1	TRAIL R2	XIAP						

## 3. pSIVA

- Order information: Cat# **NBP2-29611**
- Phosphatidylserine에 binding 했을 때만 형광 turn on!
- 실시간 apoptosis 확인 가능: Live cell imaging



Progressive population staining  
as cells move from healthy towards death.

**R&D SYSTEMS**  
a biotechne brand

**NOVUS**  
BIOLOGICALS  
a biotechne brand