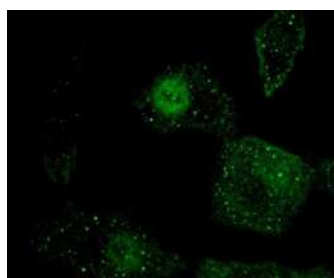


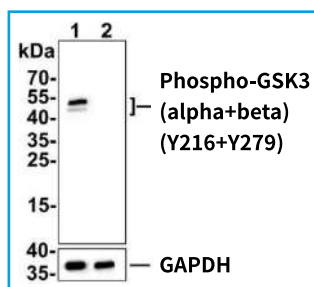
Cancer Research

1 Primary Antibody

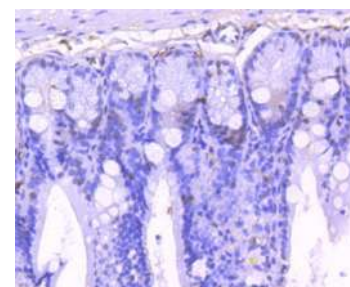
| Marker | Catalog # | Species | Clonality | Applications |
|-------------------------------|-------------|---------|-----------|---------------------|
| Akt 1 (S473) | NB100-56749 | H M R + | Mono | WB, IHC |
| Akt 1 (T450) | NBP3-13168 | H M R + | Poly | WB |
| Akt 2 (S473) | NB100-81780 | H M R | Poly | WB, IHC |
| beta-Catenin | NBP1-54467 | H M R + | Mono | WB, ICC, IHC, FC |
| c-Jun (S63) | NBP2-67471 | H M R | Mono | WB, ICC, IHC |
| CREB (S133) | NB300-273 | M R + | Poly | WB, IHC |
| eNOS (S1177) | NBP3-05432 | H M | Poly | WB, IHC |
| ERK1 (T202/Y204) | NB500-141 | H M R + | Poly | WB, IHC |
| ERK1/2 (T202/Y204, T185/Y187) | NBP2-67555 | H M R | Mono | WB |
| GSK-3 alpha/beta (Y216, Y279) | NBP2-67441 | H M R | Mono | WB, ICC, IHC |
| GSK-3 beta (Y216, Y279) | NB100-81946 | H M R + | Poly | WB, ICC, IHC |
| JNK 1 (T183, T221) | NBP2-67514 | H M R | Mono | WB, ICC, IHC, FC |
| JNK1 (T183, Y185) | NBP3-13678 | H M | Mono | WB, IHC |
| Lck (Y394) | NBP3-13305 | H M R + | Poly | WB |
| Lyn (Y397) | NBP3-12926 | H M R + | Poly | WB |
| MSK1 (S376) | NBP2-67653 | H R | Mono | WB, ICC, IHC |
| p38 alpha (T180/Y182) | NB500-138 | H M R + | Poly | WB, IHC, FC |
| p53 (S15) | NB100-1913 | H M R | Poly | WB, ICC, IHC |
| p53 (S392) | NBP2-67403 | H M R | Mono | WB, IHC |
| p53 (S46) | NBP3-13598 | H | Mono | WB, ICC, IHC |
| P70 S6 Kinase (T389/412) | NB600-1049 | H M R | Poly | WB, ICC, IHC |
| p70 S6 Kinase (S411) | NB100-82120 | H M R | Poly | WB, ICC, IHC |
| PDGF R beta (Y1021) | NBP3-13238 | H M + | Poly | WB |
| Pyk2 (Y402) | NBP3-13314 | H M R + | Poly | WB |
| RSK1 (T359, S363) | NBP2-67480 | H M R | Mono | WB, ICC, IHC |
| RSK2 (S227) | NBP3-13244 | H M R + | Poly | WB |
| Src (Y419) | NBP2-67495 | H M R | Mono | WB, FC |
| STAT1 (S727) | NBP2-67657 | H M R | Mono | WB, IHC |
| STAT2 (Y690) | NB110-86975 | H M | Poly | WB, IHC, ELISA |
| STAT3 (S727) | NBP2-67433 | H M R | Mono | WB, ICC, IHC |
| STAT3 (Y705) | NB110-82213 | H M R | Poly | WB, IHC, ICC |
| STAT5a (Y694) | NBP1-77817 | H M | Mono | WB, ICC, IHC, ELISA |



Sample: A594 cell
c-jun (p Ser 63) (NBP2-67471)



Sample: 293T cell
GSK-3 α/β (Y216, Y279) (NBP2-67441)
Lane1: (-)Lambda-PP
Lane2: (+)Lambda-PP



Sample: Mouse colon tissue
STAT1 [p Ser727] [NBP2-67657]



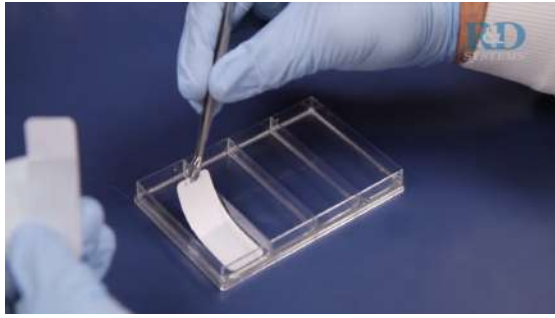
02-881-5432



techserv@woongbee.com



2 Antibody Array



웅비 Assay Service

→ R&D kit 전용 Software

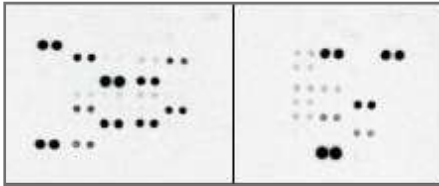


- Sample 50 uL로 동시 111개 analytes 확인 가능
- Antibody Array의 reference 중 91%가 R&D 제품
- 동시분석에 최적화된 antibody 사용
- Western Blot 장비만으로 결과 도출

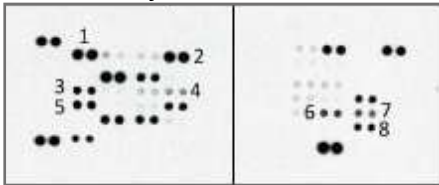
R&D Antibody Array 제품 보러가기



Untreated



PMA & Ionomycin Treated

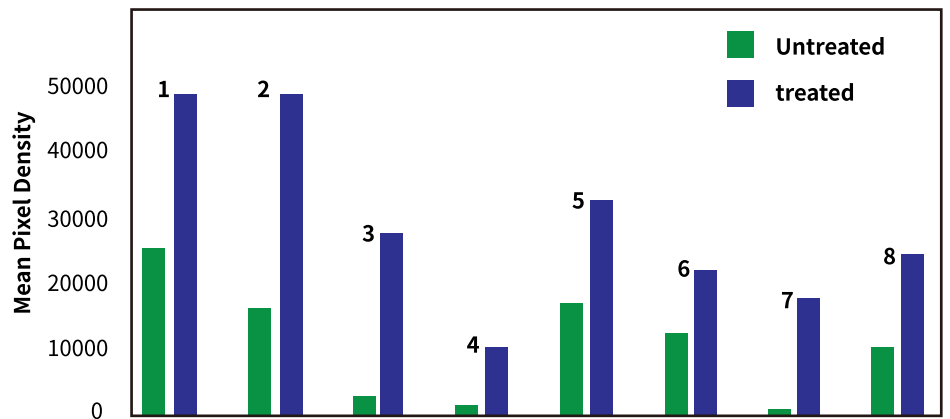


Sample: Jurkat cells lysate

Human Phospho-Kinase Array Kit (Cat# ARY003B)

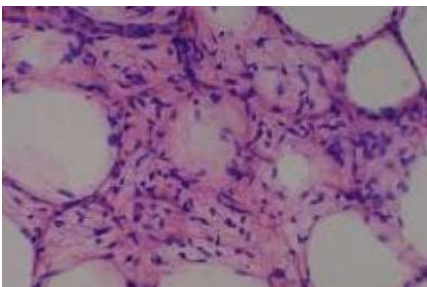
1. CREB(S133) 2. ERK1/2(T202/Y204, T185/Y187) 3. JNK1/2/3 (T183/Y185, T221/Y223) 4. MSK1/2(S376/S360)
5. p38α (T180/Y182) 6. RSK1/2/3 (S380/S386/S377) 7. STAT3 (S727)

Jurkat Cells Untreated vs. PMA/Ionomycin Treated

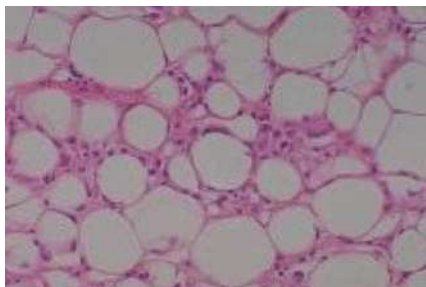


3 Tissue Microarray: Brain부터 rectum까지, 모든 cancer tissue가 있습니다!

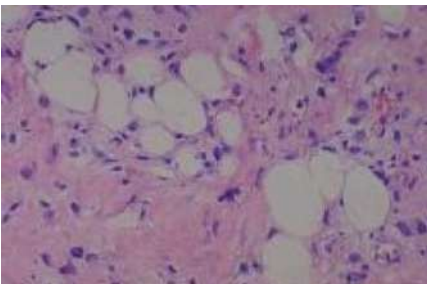
A



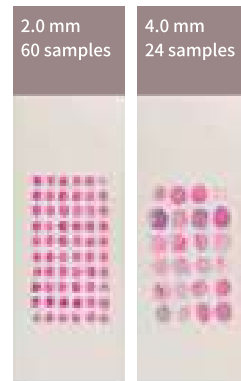
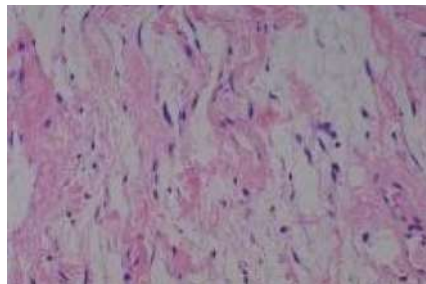
B



C



D



제품 리스트 보러가기

Human Lipomatous Tissue MicroArray (Tumor)
(Cat#NBP2-30241)

Sample:

- A) Soft Tissue, Peritoneal Cavity Liposarcoma
- B) Soft Tissue, Neck Liposarcoma
- C) Soft Tissue, retroperitoneal liposarcoma
- D) Soft tissue, toream liposarcoma



02-881-5432



techserv@woongbee.com

