

EUROLINE Autoimmune Liver Disease

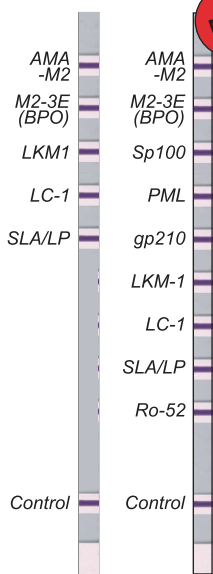
Primary biliary liver cirrhosis (PBC)

& Autoimmun Hepatitis (AIH)를

One Step 진단으로...

특장점

- One Step Screen & Confirm
- AIH에서 SLA/LP 항원의 predictive value 100%
- M2/3E (BPO) 항원 채용으로 PBC 진단의 정확도 증가 (표1)
- Recombinant SP100 & gp210;
- FANA (Nuclear dot & nuclear membrane pattern) 음성인 PBC환자에서 확인 가능



- High sensitivity (94%) & High specificity (99%)
 - New mitochondrial and nuclear antigen 도입으로 민감도 & 특이도 증가
- Antigen Profile
 - **BPO Fusion protein** 도입
 - ; M2 - enzyme complexes (3E) - BCOADH+PDH+OGDH = BPO
 - ; AMA-M2의 정확도를 높임
 - ; native M2가 놓치는 나머지 10% PBC환자 까지 잡아낼 수 있음
 - **Ro-52** (Liaskos et. al., J. Hepatology. 2007. Vol.1. 250)
 - ; AIH activity와 관련
 - **Anti-SLA/LP**
 - ; AIH에 특이적인 항체
 - ; Prevalence: 10-30%, Predictive value: 100%
 - **SLA/LP와 Ro-52항체가 함께 검출되면 AIH증상이 더욱 심각함을 의미**
- Automatically evaluation by EUROLINEScan program

Antibody Prevalence

Panel	n	M2	3E	M2 and /or 3E	Sp100	PML	Sp100 and /or PML	gp210	Total
PBC	170	138 (81%)	146 (86%)	150 (88%)	35 (21%)	22 (13%)	40 (24%)	45 (26%)	159 (94%)
AIH	49	4 (8%)	2 (4%)	4 (8%)	2 (4%)	2 (4%)	2 (4%)	2 (4%)	6 (124%)
HBV or HCV	200	0	0	0	0	1 (1%)	1 (1%)	1 (1%)	2 (1%)
Blood Donors	50	0	0	0	0	0	0	0	0

Scientific presentation at the 8th Dresden Symposium on Autoantibodies (Dresden, Germany, Sep. 2007)