

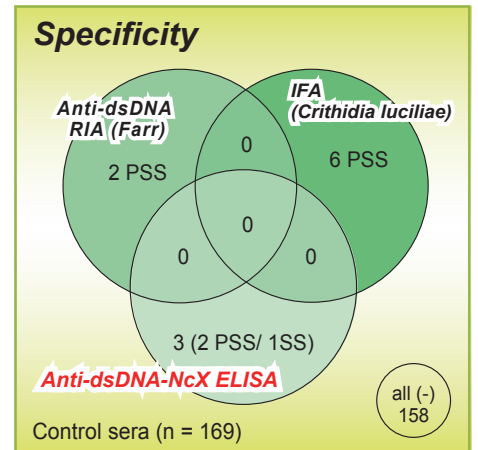
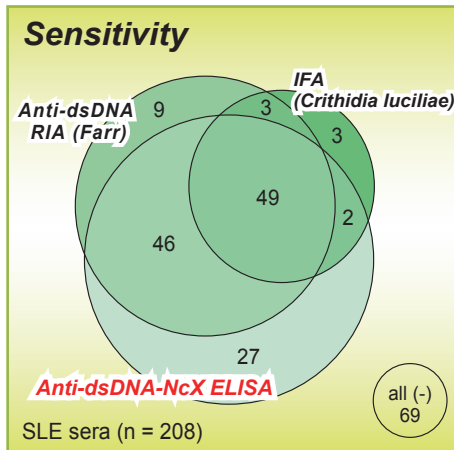
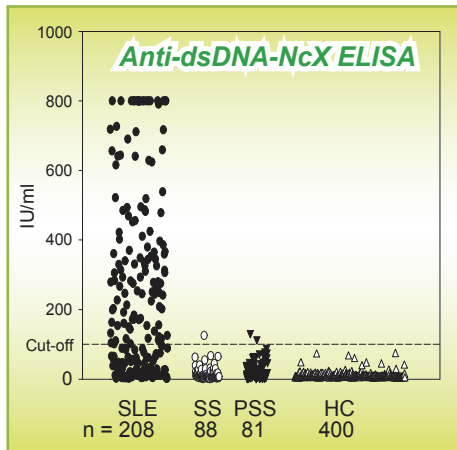
# New Anti-dsDNA (NcX) ELISA

## Systemic Lupus Erythematosus (SLE) 진단검사

### 특장점

- Innovative coating technique
  - False positive 최소화
  - New linker "Anti-nucleosome" 항체 도입
- Upgraded Sensitivity - 60.8% (based on 98% specificity)

### 민감도 및 특이도 비교 (SLE환자 208명/ 류마티스환자 378명)



10th Workshop on Autoantibodies and Autoimmunity, Guadalajara, Mexico, 2008

### 민감도 25% 향상 (NcX ELISA vs RIA/ conventional ELISA)

	Anti-dsDNA NcX ELISA	Anti-dsDNA RIA by Farr	Conventional anti-dsDNA ELISA
SLE (varying activity/ n = 208)	125	108	88
<b>Sensitivity (n = 208)</b>			
@ 95% specificity	65.1%	54.1%	49.3%
@ 98% specificity	60.8%	53.1%	35.4%
Sjogren's syndrome (n = 88)	1	0	1
Progressive systemic sclerosis (n = 81)	2	2	4
<b>Specificity (n = 169)</b>	98%	99%	97%