

Antibodies

Generate Publication-Quality Data

Guaranteed Performance

Rigorous lot-specific QC testing supports all applications listed on our datasheets to ensure superior performance.

Exclusive Clones

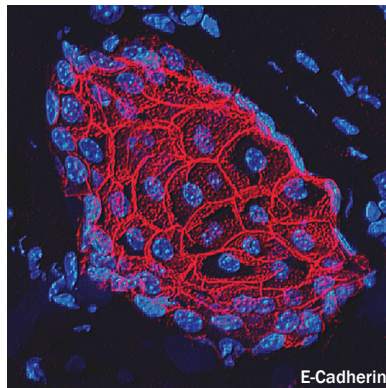
Hundreds of world-renowned unique clones, many of which have been used by HLDA to establish CD nomenclature.

Complete Transparency

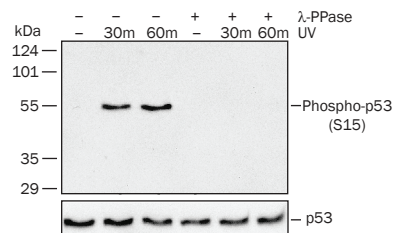
Interpretable antibody reactivity starts with fully characterized antigens. Unlike our competitors, we provide detailed antigen descriptions on our datasheets.

Clean Data

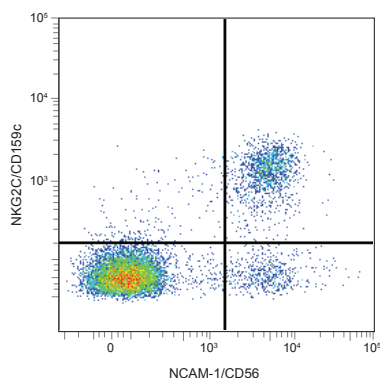
Immunocytochemistry



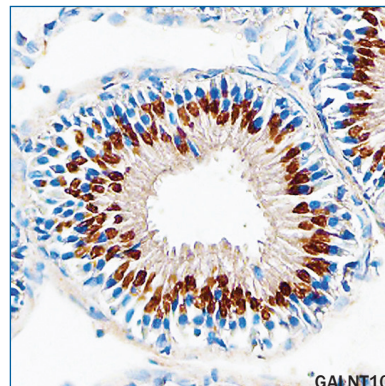
Western Blot



Flow Cytometry

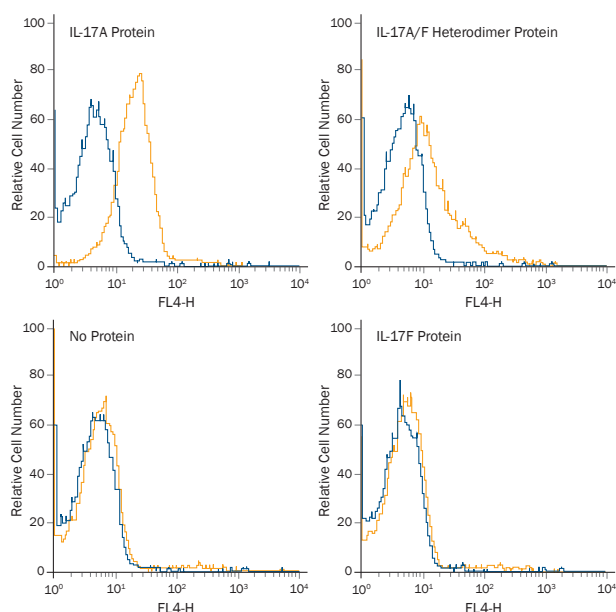


Immunohistochemistry



They Work!

Extensive specificity testing



Specificity of IL-17 detection by flow cytometry. The specificity of IL-17 antibody was demonstrated by the ability of the antibody to bind recombinant human IL-17 bound to its receptor on the surface of cells. The K562 human chronic myelogenous leukemia cell line, which expresses receptors for both IL-17A and IL-17F, was incubated with receptor-saturating concentrations of Recombinant Human IL-17A (Catalog # 317-ILB), Recombinant Human IL-17F (Catalog # 1335-IL), Recombinant Human IL-17A/F Heterodimer (Catalog # 5194-IL), or no protein. Flow cytometry was used to detect the receptor-bound cytokine following staining with an APC-conjugated Mouse Anti-Human IL-17 Monoclonal Antibody (Catalog # IC3171A; gold line) or a APC-conjugated Mouse IgG₁ Isotype Control Antibody (Catalog # IC002A; blue line).

Custom Services

When your research demands unique solutions, partner with expert scientists at Bio-Techne. Along with a project manager as a point of contact, expect our scientists to deliver products to meet your specifications and needs.

Bulk Quantities

Fill out a bulk quote request at RnDSystems.com/Bulk

Recent Citations

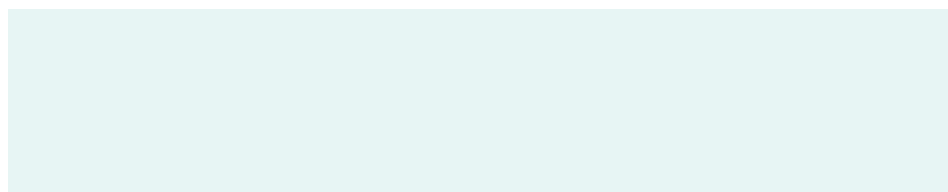
The G protein-coupled receptor GALR2 promotes angiogenesis in head and neck cancer. Banerjee, R. *et al.* (2014) *Mol. Cancer Ther.* **13**:1323.

Goat Anti-Human IL-6 Affinity Purified Polyclonal Antibody (Catalog # AF-206-NA)

Both HLA-B*57 and plasma HIV RNA levels contribute to the HIV-specific CD8⁺ T cell response in HIV controllers. Lécuroux, C. *et al.* (2014) *J. Virol.* **88**:176.

Fluorescein-conjugated Mouse Anti-Human CCR7 Monoclonal Antibody (Catalog # FAB197F)

Distributed by _____



biotechne®

LEARN MORE

rndsystems.com/Antibodies

bio Building Innovation Opportunities

bio-techne.com
info@bio-techne.com
techsupport@bio-techne.com

North America
TEL 800 343 7475

Europe • Middle East • Africa
TEL +44 (0)1235 529449

China
info.cn@bio-techne.com
TEL +86 (21) 52380373

Rest of World
bio-techne.com/find-us/distributors
TEL +1 612 379 2956