

ELISAs

ELISpot Kits

We Outperform the Competition

Be Confident in the Data

Small, crisp spots allow for easier, more accurate quantitation and the largest dynamic range (number of detectable spots/well) on the market.

Detect Low Frequency Responses

Our kits can measure responses with frequencies well below 1 in 100,000 cells—up to 20% more sensitive than the competition.

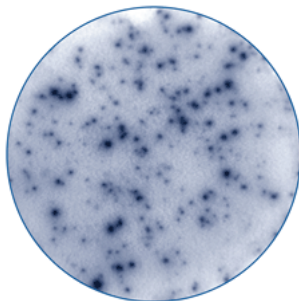
Directly Compare Results—Even Years Later

We ensure lot-to-lot consistency by manufacturing multiple equivalent lots.

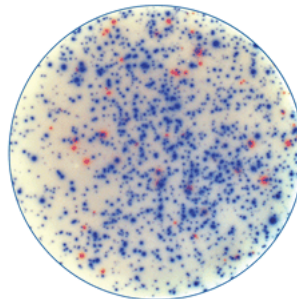
Choose from Multiple Formats

We offer ready-to-use kits for chromogenic and fluorescent detection formats. Do-it-yourself development modules for single analytes are also available.

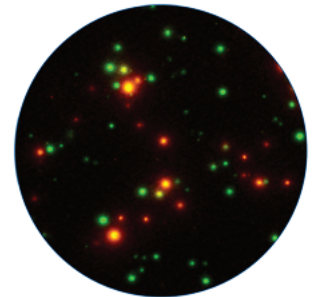
Single Analyte ELISpot



Dual-Color ELISpot



Dual-Color FluoroSpot



Be Assured the Kit Worked

We are the only company that provides recombinant protein positive controls.

Have Confidence with Bio-Techne as Your Partner

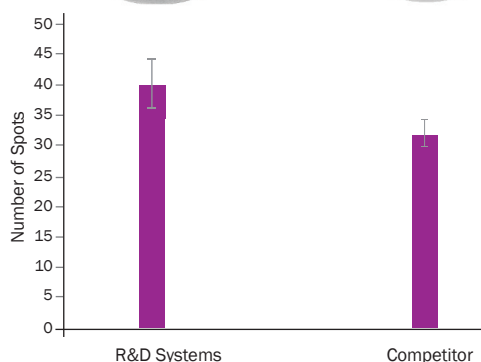
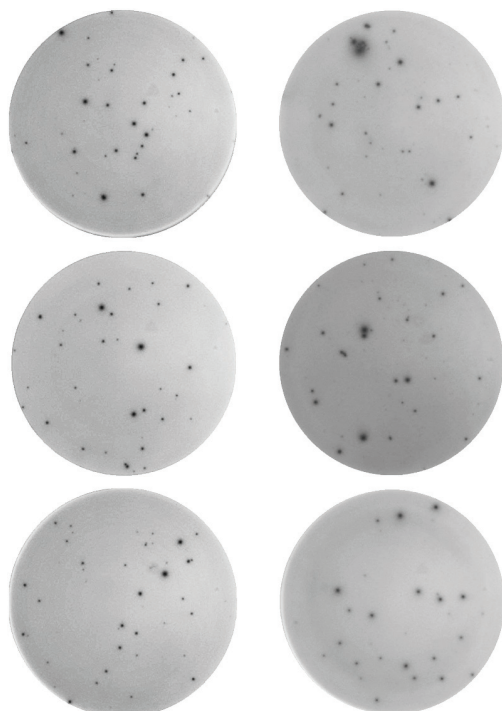
Our best-in-class technical support is ready to help with any questions you have about our products.

Outperforming the Competition with Crisper and Brighter Spots

Detection of IFN- γ -secreting Cells

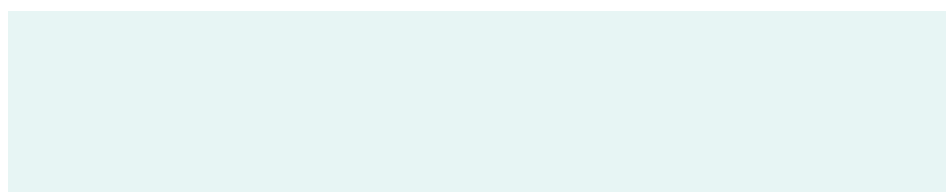
R&D Systems

Competitor



R&D Systems ELISpot outperforms the leading competitor. Peripheral blood mononuclear cells (PBMCs) were stimulated with 0.5 $\mu\text{g}/\text{mL}$ Cal or 0.05 $\mu\text{g}/\text{mL}$ PMA. Following an overnight incubation, the number of IFN- γ -secreting PBMCs was determined using a Human IFN- γ ELISpot kit from either R&D Systems (Catalog # EL285; top) or a leading competitor (bottom). Images were collected and spots were counted with a QuantiHub 4.1 ELISpot reader. Three wells from each microplate are shown. The R&D Systems ELISpot Kit detected more IFN- γ -secreting cells and produced significantly brighter and crisper spots for easier quantification.

Distributed by _____



Recent Citations

Epidermal RelA specifically restricts contact allergen-induced inflammation and apoptosis in skin. Kumari, S. *et al.* (2014) *J. Invest. Dermatol.* **134**:2541.

Mouse IFN- γ ELISpot Kit (Catalog # EL485)

A targeted mutation within the feline leukemia virus (FeLV) envelope protein immunosuppressive domain to improve a canarypox virus-vectored FeLV vaccine. Schlecht-Louf, G. *et al.* (2014) *J. Virol.* **88**:992.

Feline IL-10 ELISpot Development Module (Catalog SEL736)

Custom Services

When your research demands unique solutions, partner with expert scientists at Bio-Techne. Along with a project manager as a point of contact, expect our scientists to deliver products to meet your specifications and needs.

Bulk Quantities

Fill out a bulk quote request at rndsystems.com/Bulk

bio-**techne**

LEARN MORE

rndsystems.com/ELISpot



Building Innovation Opportunities

bio-techne.com
info@bio-techne.com
techsupport@bio-techne.com

North America
 TEL 800 343 7475

Europe • Middle East • Africa
 TEL +44 (0)1235 529449

China
info.cn@bio-techne.com
 TEL +86 (21) 52380373

Rest of World
bio-techne.com/find-us/distributors
 TEL +1 612 379 2956