

Proteome Profiler™ Antibody Arrays

When You Need a Simple Sample Screening Solution

Simple Technology

Specific capture antibodies are spotted in duplicate onto nitrocellulose membranes and a simple two-site sandwich assay principle is utilized.

No Special Equipment

If your lab is set up for Western blotting, then you already have all the equipment needed to use our antibody arrays.

Cost-effective Screening Method

Each array offers a quick and inexpensive analysis of many analytes simultaneously, in less time than it takes to perform a Western blot.

Wide Selection

Choose from over 25 arrays for the detection of both intracellular and extracellular factors from a wide variety of sample types.

User-friendly Design

Each array is stamped with an identification number for easy record keeping and contains reference spots in three corners for orientation purposes.

Unprocessed Array

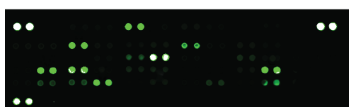


Choose the Detection Method That Best Fits Your Needs

Chemiluminescent Detection



LI-COR® Infrared Detection*

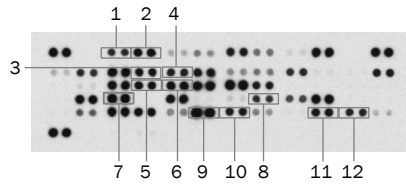


*Select arrays only.

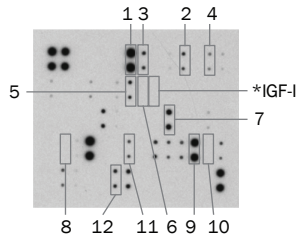
For research only. Not for use in diagnostic procedures.

Superior Performance and Conscientious Design

A R&D Systems Human Adipokine Array



Competitor Array



R&D Systems Antibody Arrays Demonstrate Superior Analyte Signal Detection. (A) The R&D Systems Proteome Profiler Human Adipokine Array Kit (Catalog # ARY024) and a leading competitor array were incubated with 200 μ L of human serum. Analyte detection spots common to both arrays are boxed and numbered. (B) Signal strength of the shared analytes is compared in the table. The competitor array shows comparable signal strength for only three of the 12 shared analytes.

B

	Analyte	R&D Systems Signal	Competitor Signal
1	Adiponectin	+	+
2	Angiopoietin-1	+	Weak
3	Complement factor D	+	Weak
4	CRP	+	Weak
5	IGFBP-2	+	Weak
6	IGFBP-3	+	Not Detected
7	Leptin	+	+
8	MIF	+	Not Detected
9	RANTES	+	+
10	Resistin	+	Not Detected
11	Serpin E1/PAI	+	Weak
12	TIMP-1	+	Weak

*The concentration of IGF-I in this serum sample is 68 ng/mL (measured using the R&D Systems Human IGF-I Quantikine® ELISA Kit; Catalog # DG100), yet it is not detected on the competitor array. A sample pre-treatment step is required to detect IGF-I in serum or plasma, which interferes with the detection of all other analytes. For this reason, to provide customers with the most accurate and reliable data, the R&D Systems array does not include IGF-I.

Custom Services

When your research demands unique solutions, partner with expert scientists at Bio-Techne. Along with a project manager as a point of contact, expect our scientists to deliver products to meet your specifications and needs.

Bulk Quantities

Fill out a bulk quote request at rndsystems.com/Bulk

Recent Citations

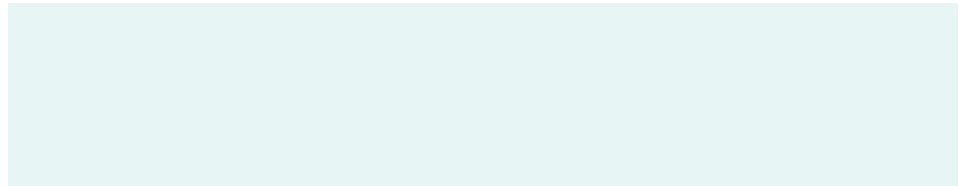
Profilin-1 phosphorylation directs angiocrine expression and glioblastoma progression through HIF-1 α accumulation. Fan, Y. *et al.* (2014) *Nat. Cell Biol.* **16**:445.

[Proteome Profiler Mouse Angiogenesis Array Kit \(Catalog # ARY015\)](#)

Desmoglein 3 promotes cancer cell migration and invasion by regulating activator protein 1 and protein kinase C-dependent-Ezrin activation. Brown, L. *et al.* (2014) *Oncogene* **33**:2363.

[Proteome Profiler Human Phospho-Kinase Array Kit \(Catalog # ARY003B\)](#)

Distributed by _____



bio-techne

LEARN MORE

rndsystems.com/ProteomeProfiler



Building
Innovation
Opportunities

bio-techne.com
info@bio-techne.com
techsupport@bio-techne.com

North America
TEL 800 343 7475

Europe • Middle East • Africa
TEL +44 (0)1235 529449

China
info.cn@bio-techne.com
TEL +86 (21) 52380373

Rest of World
bio-techne.com/find-us/distributors
TEL +1 612 379 2956