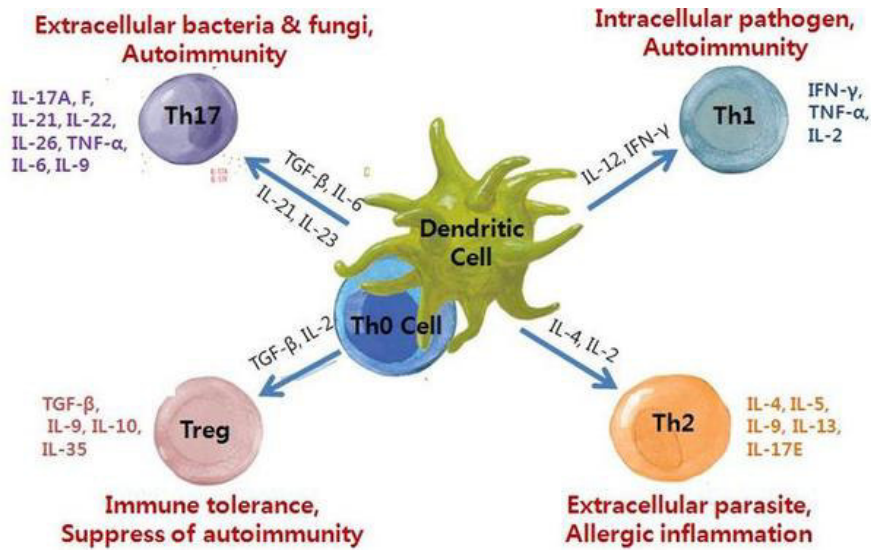


# CD4<sup>+</sup> T Cell Cytokine Secretion



CD4<sup>+</sup> T cell은 cytokine, transcription factor의 영향을 받아 다양한 subset (Th1, Th2, Th17 등)으로 분화되며, B cell의 항체 생산, macrophage의 항박테리아 활동 촉진, cytotoxic T cell의 활성화 등 면역계의 작용에 중요한 역할을 하는 것으로 잘 알려져 있습니다. 그렇기 때문에 secreted cytokine의 확인, 발현 비교는 **T cell 활성화와 분화, pathogenic infection, chronic inflammation, allergy, autoimmunity** 연구를 위해 필수적이라고 할 수 있습니다.

## T cell subset별 Secreted Cytokine의 정량 측정

Quantikine ELISA	DuoSet ELISA
<ul style="list-style-type: none"> <li>✓ 처음이지만 정확한 결과를 얻고 싶다면 &gt; <b>ELISA gold-standard</b>로 !!!</li> <li>✓ 엄격한 QC, 최적화된 Ab pair와 diluents로 정확한 target 측정 가능</li> <li>✓ SCI 상위 42%의 논문이 인용!!</li> </ul>	<ul style="list-style-type: none"> <li>✓ 익숙하고 실험량이 많다면 &gt; 경제적, 재현성 있는 <b>development</b> 제품으로 !!</li> <li>✓ 총 25만개 reference, 800종 이상 제품 보유!!</li> <li>✓ <b>Ancillary reagent kit</b>과 함께 편리함, 재현성 있는 결과까지!!</li> </ul>

### Th1 > Intracellular pathogen, Autoimmunity에 관여

secreted cytokine	human		mouse		rat	
	Quantikine	DuoSet	Quantikine	DuoSet	Quantikine	DuoSet
<b>IFN-gamma</b>	<a href="#">DIF50</a>	<a href="#">DY285</a>	<a href="#">MIF00</a>	<a href="#">DY485</a>	<a href="#">RIF00</a>	<a href="#">DY585</a>
<b>IL-2</b>	<a href="#">D2050</a>	<a href="#">DY202</a>	<a href="#">M2000</a>	<a href="#">DY402</a>	<a href="#">R2000</a>	<a href="#">DY502</a>
<b>TNF-alpha</b>	<a href="#">DTA00C</a>	<a href="#">DY210</a>	<a href="#">MTA00B</a>	<a href="#">DY410</a>	<a href="#">RTA00</a>	<a href="#">DY510</a>

## Th2 > Extracellular bacteria, Allergy & Asthma에 관여

secreted cytokine	human		mouse		rat	
	Quantikine	DuoSet	Quantikine	DuoSet	Quantikine	DuoSet
IL-4	<a href="#">D4050</a>	<a href="#">DY204</a>	<a href="#">M4000B</a>	<a href="#">DY404</a>	<a href="#">R4000</a>	<a href="#">DY504</a>
IL-5	<a href="#">D5000B</a>	<a href="#">DY205</a>	<a href="#">M5000</a>	<a href="#">DY405</a>	-	-
IL-9	-	<a href="#">DY209-05</a>	-	<a href="#">DY409</a>	-	-
IL-13	<a href="#">D1300B</a>	<a href="#">DY213</a>	<a href="#">M1300CB</a>	<a href="#">DY413</a>	-	-
IL-17E	-	-	-	<a href="#">DY1399</a>	-	-

## Th17 > Extracellular bacteria & fungi, Autoimmunity에 관여

secreted cytokine	human		mouse		rat	
	Quantikine	DuoSet	Quantikine	DuoSet	Quantikine	DuoSet
IL-17A	<a href="#">D1700</a>	<a href="#">DY317</a>	<a href="#">M1700</a>	<a href="#">DY421</a>	-	-
IL-17F	-	<a href="#">DY1335</a>	<a href="#">M17F0</a>	<a href="#">DY2057</a>	<a href="#">M17F0</a>	<a href="#">DY4437</a>
IL-21	-	-	-	<a href="#">DY594</a>	-	-
IL-22	<a href="#">D2200</a>	<a href="#">DY782</a>	<a href="#">M2200</a>	<a href="#">DY582</a>	<a href="#">M2200</a>	-
TNF-alpha	<a href="#">DTA00C</a>	<a href="#">DY210</a>	<a href="#">MTA00B</a>	<a href="#">DY410</a>	<a href="#">RTA00</a>	<a href="#">DY510</a>
IL-6	<a href="#">D6050</a>	<a href="#">DY206</a>	<a href="#">M6000B</a>	<a href="#">DY406</a>	<a href="#">R6000B</a>	<a href="#">DY506</a>
IL-9	-	<a href="#">DY209-05</a>	-	<a href="#">DY409</a>	-	-

## Treg > Immune tolerance, Lymphocyte homeostasis, Autoimmunity 억제에 관여

secreted cytokine	human		mouse		rat	
	Quantikine	DuoSet	Quantikine	DuoSet	Quantikine	DuoSet
TGF-beta 1	<a href="#">DB100B</a>	<a href="#">DY240</a>	<a href="#">MB100B</a>	<a href="#">DY1679</a>	<a href="#">MB100B</a>	-
IL-9	-	<a href="#">DY209-05</a>	-	<a href="#">DY409</a>	-	-
IL-10	<a href="#">D1000B</a>	<a href="#">DY217B</a>	<a href="#">M1000B</a>	<a href="#">DY417</a>	<a href="#">R1000</a>	<a href="#">DY522</a>

Th9, Th22, Tfh, Tfr > [확인하러 가기](#)

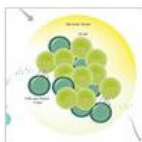
## T cell 연구의 Total solution!!

- ✓ Secreted cytokine의 characterization을 위한 screening 제품
  - > [Proteom profiler Antibody Array](#), [R&D Luminex Assay](#)
- ✓ PBMC, splenocyte에서 CD4 T cell isolation > [MagCelect Cell Isolation Kit](#)
- ✓ CD4 T cell Differentiation > [Differentiation Cytokine](#),  
[CellXVivo Cell Differentiation Kit](#)
- ✓ Flow cytometry antibody > [Multi-Color Flow Cytometry Kit](#),  
[Antibody \(Cytokine, Cell surface, Transcription factor\)](#)

# R&D systems<sup>®</sup> a biotechne brand News Letter

이번 주의 R&D News Letter 주제는 **Immunology (B cell research)**입니다.

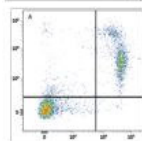
관련 그림을 클릭하시면 자세히 살펴보실 수 있습니다!



[\\* Explore Our Collection of Products for B Cell Research](#)



[\\* New! B Cell Development Miniposter](#)

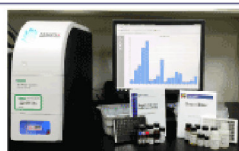


**New Flow Cytometry Antibody**  
[\\* Alexa Fluor<sup>®</sup> 647 conjugated Human BLIMP1/PRDM1 Antibody](#)  
[\\* Mouse CD24 Antibodies](#)



[\\* Now Offering Recombinant Human IL-21](#)

**웅비메디텍 Assay Service**



**- Luminex**  
**- ELISA**

Time Saving !!! woongbee.com  
Quality Up !!! 031-776-3300

웅비메디텍 Assay Service 홈페이지 OPEN!! [CLICK~CLICK!!](#)

너무 바쁜데 분석 장비까지?!! 웅비메디텍에 맡기고 실험스트레스에서 해방되세요!!

---

제품 상담 : 학술마케팅팀 이지은([techserv@woongbee.com](mailto:techserv@woongbee.com)) / 031-776-3300 내선 123)

---



462-807 경기도 성남시 분당구 상대원1동 190-1  
SKn 테크노파크 비즈센터 1309-11호  
Tel. 031-776-3300 Fax. 031-776-3303  
[woongbee@woongbee.com](mailto:woongbee@woongbee.com)

- 본 메일은 발신 전용으로, 회신되지 않습니다.
- 메일을 원하지 않으시면 [이곳을 클릭](#)하시거나 [webmaster@woongbee.com](mailto:webmaster@woongbee.com)으로 연락주시기 바랍니다.  
(If you don't want this e-News information, click here, please.)