

Multiplex Assays for TGF- β Superfamily Signaling

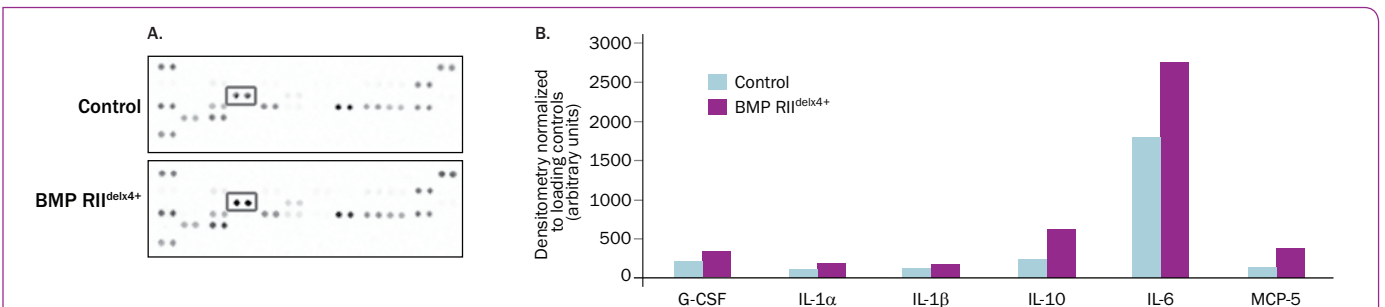
Proteome Profiler™ Antibody Arrays

- Rapid** - analyze the expression level of dozens of proteins simultaneously
- Economical** - contains 4 membranes—each antibody is spotted in duplicate
- Versatile** - over 25 arrays for both intra- and extracellular factors

Luminex® Performance Assays

- Flexible** - up to 100 biomarkers can be simultaneously profiled
- Economical** - assays require a small sample volume (<50 μ L)
- Time-saving** - all assays can be performed in 3-3.5 hrs

Proteome Profiler: Increase Your Potential for Discovery



Proteome Profiler Mouse Cytokine Array Detects Aberrant Cytokine Production in Macrophages from BMP RII^{delx4+} Transgenic Mice. Macrophages isolated from control and BMP RII^{delx4+} mice were activated in culture using lipopolysaccharide. Supernatants were collected after 24 h and assayed using the Proteome Profiler Mouse Cytokine Antibody Array (Catalog # ARY006). (A) Representative arrays of activated Control and BMP RII^{delx4+} macrophage supernatants. The set representing Interleukin (IL)-6 is boxed in gray. (B) Densitometry histograms of selected analytes from activated Control (blue) and BMP RII^{delx4+} (purple) macrophage supernatants. IL-1 α , IL-1 β , IL-6, IL-10, G-CSF, and MCP-5 are increased in BMP RII^{delx4+} mice compared to control. All changes are significant at $p < 0.01$ by ANOVA. Adapted from Talati M., et al. (2014) PLoS ONE 9: e94119.

Investigate the functional effects of TGF- β signaling pathways

Kit	Catalog #		
	Human	Mouse	Rat
Cytokine Array, Panel A	ARY005	ARY006	ARY008
XL Cytokine Array	ARY022	ARY028	-
Angiogenesis Array	ARY007	ARY015	-

Investigate non-canonical TGF- β signaling

Array	Catalog #
Human Phospho-Mitogen-activated Protein Kinase (MAPK) Antibody Array	ARY002B
Human Phospho-Kinase Array	ARY003B



Luminex Performance Assays

R&D Systems Luminex Performance Assays are designed to maximize assay accuracy and precision while preserving the benefits of multiplexing. Choose analytes from established panels and select “premixed” or “end-user mixed” options.

TGF- β Superfamily-Related Luminex Performance Assay Panels

Human High Sensitivity Cytokine Panel A
Human High Sensitivity Cytokine Panel B
Human Angiogenesis Panel
Human TGF- β Panel

