

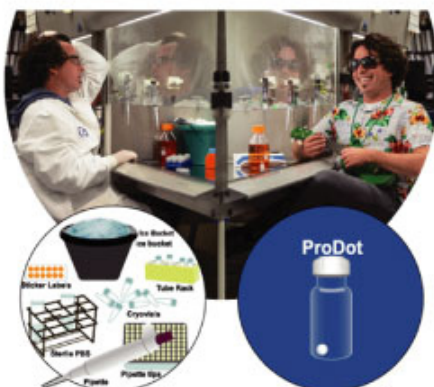


농도계산? Reconstitution?
Pipetting Error? Aliquot?

ProDot 하나면 모든 고민 해결!

[Watch Video](#)

ProDot 특징



- ✓ Vial 당 5 μ g씩 소량분주
 - Aliquot 불필요
 - 농도계산 불필요
 - No Pipetting Error
- ✓ Freeze-Thaw 과정 생략!
 - 4°C 에서 6개월 보관
- ✓ 5 μ g, 50 μ g, 250 μ g size 제공

ProDot 제품군

Immune Cell Culture	Stem Cell Cultures		
Macrophage Polarization	iPS Renewal	NSC Maintenance	HSC Maintenance
• GM-CSF	• FGF-basic	• EGF	• IL-3
• IL-4	• TGF-beta 1	• LIF	• IL-6
• IL-10		• FGF-basic	• SCF/c-kit
• IFN-gamma			• GM-CSF

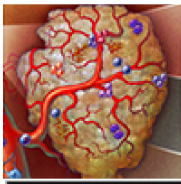
* ProDot은 모두 human 제품입니다.

[전체제품
보러가기](#)

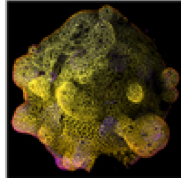
R&D systems a biotechne brand **News Letter**

이번 주의 R&D News Letter 주제는 **Stem Cells**입니다.

관련 그림을 클릭하시면 자세히 살펴보실 수 있습니다!

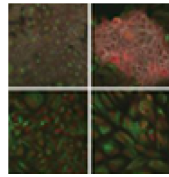


[Resources for Cancer Immunotherapy Research](#)



[Cancer Organoid Reagent Guide](#)


Immune Cell
Differentiation
at its Simplest



[Stem Cell - Immune System Interactions](#)

[Rapid and Reliable Induction of EMT using a Defined Media Supplement](#)

웅비메디텍
Assay Service



- Luminex
- ELISA

Time Saving !!! woongbee.com
Quality Up !!! 031-776-3300

웅비메디텍 Assay Service 홈페이지!! CLICK~CLICK!!

너무 바쁜데 분석 장비까지?!!! 웅비메디텍에 맡기고 실험스트레스에서 해방되세요!!

제품 상담 : 학술마케팅팀 최현아 (techserv@woongbee.com / 031-776-3300 내선126)

Leaders Trust
(주)웅비메디텍
www.woongbee.com

462-807 경기도 성남시 중원구 상대원1동 190-1
SKn 테크노파크 비즈센터 1309~11호
Tel. 031-776-3300 Fax. 031-776-3303
woongbee@woongbee.com