

Antibodies for **NEUROSCIENCE** Markers

R&D SYSTEMS
a biotechne brand

NOVUS
BIOLOGICALS
a biotechne brand

biotechne R&D Systems와 Novus 에서는 axon guidance와 pattern formation 같은, 발달 과정 부터 노화 과정 및 신경 퇴행성 질환에 관련된 신경계 기능 의 여러 측면을 연구할 수 있는 다양한 tool을 제공합니다

Abs Quality is Our Pride!

- ✓ Very high sensitivity and specificity
- ✓ Guaranteed 100% for quality and reproducibility
- ✓ Customizing Order
- ✓ Sample Size Abs 출시

Growth Cone Markers



Nuclear

STRAP

Cytoplasmic

Coactosin-like Protein 1/ COTL1	Drebrin 1
CRMP1	FABP7/B-FABP
CRMP2	FARP2
CRMP5	Growth Cone Antibody (2G13)
DCLK1	STRAP
Doublecortin	

* Cytoplasmic (plasma membrane)

BASP1	GO Proteins
CAP1	G Proteins Inhibitor 2
GAP-43	SNAP25

* Cytoplasmic (endoplasmic reticulum)

RTN1/NSP	SPG3A
----------	-------

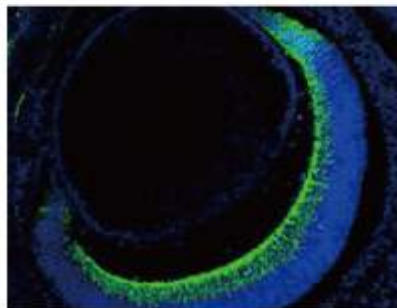
* Cytoplasmic (early endosome)

Syntaxin 7

Cell Surface

L1CAM	Neuropilin-1
NCAM-1/CD56	

*Cytoplasmic marker is found associated with the membrane of the listed cell structure.



Select R&D Systems® and Novus Biologicals® Antibodies

Marker	Catalog #	Species	Clonality	Applications
◆ BASP1	NBP2-14347	H M R	Poly	ICC, IHC
◆ CAP1	NBP1-31718	H M R +	Poly	WB, IHC
◆ Coactosin-like Protein 1/ COTL1	AF7865	H M R	Poly	WB, ICC
◆ CRMP1	NBP1-76982	H M R	Poly	WB, ICC, IHC, ELISA
◆ CRMP2	NBP1-85448	H M R	Poly	WB, ICC, IHC
◆ CRMP5	NB100-74394	H M R +	Mono	WB, ICC, IHC
◆ DCLK1	NBP1-77127	H M R	Poly	WB, ICC, IHC, ELISA
◆ Doublecortin	NBP1-92684	H M R +	Mono	WB, ICC
◆ Drebrin 1	NB100-1951	H M R +	Mono	WB, ICC, IHC, IP
◆	MAB7739	H	Mono	WB, ICC, SW
◆ FABP7/B-FABP	NBP1-88648	H R	Poly	WB, ICC, IHC
◆	AF3166	H	Poly	WB, IHC, SW
◆ FARP2	NBP1-84680	H	Poly	WB, IHC
◆ GAP-43	NB300-143	H M R +	Poly	WB, ICC, IHC
◆ GO Protein α	NBP2-16703	H M	Poly	WB, ICC, IHC, IP
◆ G Protein α Inhibitor 2	NBP1-89771	H M R	Poly	ICC, IHC
◆ Growth Cone Antibody (Clone 2G13)	NB600-785	M R +	Mono	IHC
◆ L1CAM	NB100-2682	H M	Mono	WB, ICC, IHC, CyTOF, ELISA, FC, IP
◆	AF277	H	Poly	WB, IHC
◆ NCAM-1/CD56	MAB24081	H	Mono	WB, IHC, CyTOF, FC
◆	AF2408	H M	Poly	WB, ICC, CyTOF, FC, SW
◆	AF3870	H	Poly	WB, IHC, B/N, CyTOF, FC
◆ Neuropilin-1	AF566	M R	Poly	WB, IHC, B/N, CyTOF, FC
◆ RTN1	NBP1-92677	H M R +	Mono	WB, ICC, IHC
◆ RTN1-A/NSP	MAB5996	R	Mono	IHC
◆ SNAP25	AF5946	H M R	Poly	WB, ICC
◆ SPG3A	NBP1-90234	H M R	Poly	IHC
◆ STRAP	NBP2-24740	H M +	Poly	WB, IHC
◆ Syntaxin 7	AF5478	H M R	Poly	WB, ICC

GAP-43 in Embryonic Mouse. GAP-43 was detected in immersion-fixed paraffin-embedded sections of embryonic mouse tissue (E15.5) using a Rabbit Anti-Human/Mouse/Rat Antigen Affinity-Purified Polyclonal Antibody (Novus Biologicals, Catalog # NB300-143). The tissue was stained with an Alexa Fluor® 488-conjugated secondary antibody (green) and counterstained (blue).

Cholinergic Neuron Markers



Cytoplasmic

Acetylcholinesterase/ACHE	Choline Acetyltransferase/ ChAT
---------------------------	------------------------------------

Cell Surface

VACHT/SLC18A3

Select R&D Systems® and Novus Biologicals® Antibodies

Marker	Catalog #	Species	Clonality	Applications
◆ Acetylcholinesterase/ACHE	NBP2-22449	H M R +	Mono	WB, ICC, IHC, ELISA, FC, GS, IP
◆	AF7534	H	Poly	IHC
◆ Choline Acetyltransferase/ ChAT	NBP1-30052	H M R +	Poly	WB, ICC, IHC
◆	AF3447	H	Poly	WB, IHC
◆ VACHT/SLC18A3	NB110-74764	H M R	Poly	WB, IHC

Dopaminergic Neuron Markers

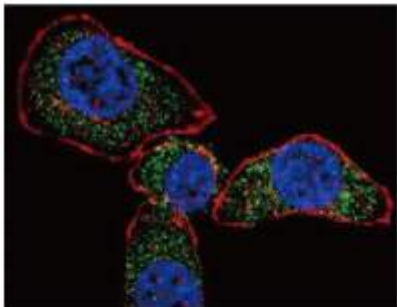


Nuclear	HNF-3β/FoxA2 LMX1b	Nurr1/NGFI-Bβ/NR4A2
Cytoplasmic	Tyrosine Hydroxylase	
Cytoplasmic (storage vesicle)	Dopamineβ-Hydroxylase	
Cell Surface	FDLR1	SLC6A3/DAT1

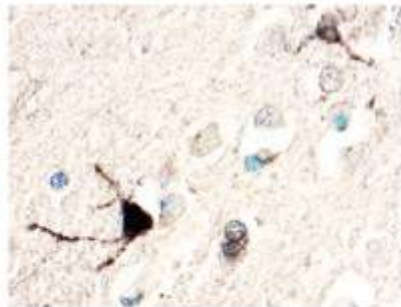
*Cytoplasmic marker is found associated with the membrane of the listed cell structure.

Select R&D Systems® and Novus Biologicals® Antibodies

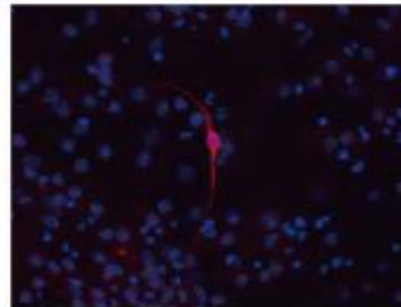
Marker	Catalog #	Species	Clonality	Applications
Dopamineβ-Hydroxylase	NBP1-31386	H M R	Poly	WB, ICC, IHC
FDLR1	MAB5646	H	Mono	WB, ICC, CyTOF, ELISA, FC
	AF6936	M	Poly	ICC
HNF-3β/FoxA2	MAB240	H M R	Mono	WB, IHC, FC
	AF2400	H	Poly	WB, ICC, ChIP
LMX1b	NBP2-41194	H M R	Poly	WB, ICC, IHC, ELISA
Nurr1/NGFI-Bβ/NR4A2	AF2156	H M	Poly	WB, IHC
SLC6A3/DAT1	NBP2-22164	M R (H -ve)	Mono	WB, ICC, IHC, ELISA, IP
Tyrosine Hydroxylase	NB300-109	H M R +	Poly	WB, ICC, IHC, SW
	AF7566	H M R	Poly	WB, ICC, SW



ACHE in U-251 Human Glioblastoma Cells. Acetylcholinesterase (ACHE) was detected in immersion-fixed U-251 human glioblastoma cells using a Mouse Anti-Human/Mouse/Rat Acetylcholinesterase/ACHE (Clone ZR3) Monoclonal Antibody (Novus Biologicals, Catalog # NBP2-22449). The cells were stained using a DyLight® 488-conjugated anti-mouse secondary antibody (green). The cells were also stained for F-Actin (phalloidin, red) and counterstained with DAPI (blue).



ChAT in Human Brain. Choline Acetyltransferase (ChAT) was detected in immersion-fixed paraffin-embedded sections of human brain using a Goat Anti-Human Choline Acetyltransferase/ChAT Antigen Affinity-Purified Polyclonal Antibody (Catalog # AF3447). The tissue was stained with the Anti-Goat HRP-DAB Cell & Tissue Staining Kit (Catalog # CT5008, brown) and counterstained with hematoxylin (blue). All cited reagents are from R&D Systems.



Tyrosine Hydroxylase in D3 Mouse Embryonic Stem Cells. Tyrosine Hydroxylase was detected in immersion-fixed D3 mouse embryonic stem cells using a Sheep Anti-Human Tyrosine Hydroxylase Antigen Affinity-Purified Polyclonal Antibody (Catalog # AF7566). The cells were differentiated into dopaminergic neurons using the Human/Mouse Dopaminergic Neuron Differentiation Kit (Catalog # SC001B). Cells were stained using the NorthernLights™ 557-Conjugated Donkey Anti-Sheep IgG Secondary Antibody (Catalog # NL010, red) and counterstained with DAPI (blue). Specific staining was localized to dopaminergic neurons. All cited reagents are from R&D Systems.

서울특별시 송파구 송파대로 201 테라타워2 A동 1113호 (문정동 642번지) ☎ 02-881-5432 | FAX : 02-881-5454 ✉ techserv@woongbee.com

제품 상담 : 학술마케팅팀 한소영 (techserv@woongbee.com / 02-881-5432 내선 731)

웅비 Assay Service
Luminex / ELISA / Western
 Time Saving !!! Quality UP !!!

웅비 New Assay Service OPEN
 Auto Western Blot with **Wes**
 새로운 분석서비스를 만나보세요

Wes
 R&D certi, Abs, Auto Western blot

서울특별시 송파구 송파대로201동 테라타워A동 1113호 (문정동642번지)
Copyright©All Rights Reserved Any questions to woongbee@woongbee.com

-2017년 12월 26일-