

Antibodies for **NEUROSCIENCE** Markers

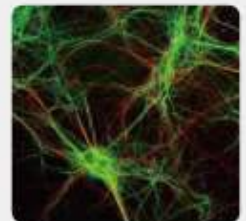
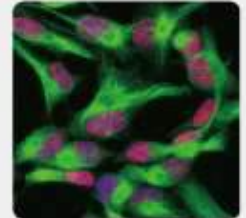
R&D SYSTEMS
a biotechne brand

NOVUS
BIOLOGICALS
a biotechne brand

biotechne R&D Systems와 Novus 에서는 axon guidance와 pattern formation 같은, 발달 과정 부터 노화 과정 및 신경 퇴행성 질환에 관련된 신경계 기능 의 여러 측면을 연구할 수 있는 다양한 tool을 제공합니다

Abs Quality is Our Pride!

- ✓ Very high sensitivity and specificity
- ✓ Guranteed 100% for quality and reproducibility
- ✓ Customizing Order
- ✓ Sample Size Abs 출시



Neuronal Markers

General Markers



Nuclear

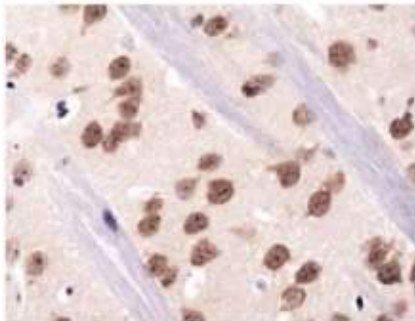
NeuroD1 RBFOX3/NeuN

Cytoplasmic

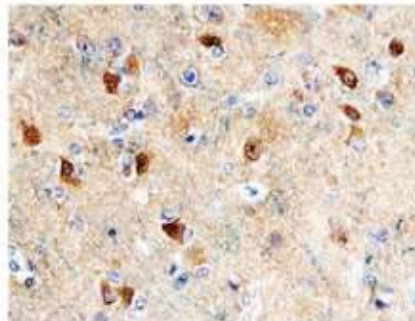
Calbindin D NF-M
 Doublecortin PSD-93
 Enolase 2/Neuron-Specific Enolase PSD-95
 MAP2 Tau
 NF-H β II Tubulin
 NF-L UCH-L1/PGP9.5

Select R&D Systems® and Novus Biologicals® Antibodies

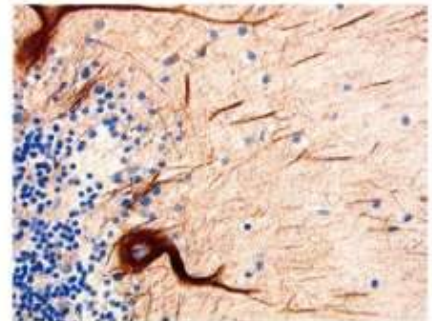
Marker	Catalog #	Species	Clonality	Applications
◆ Calbindin D	AF3320	H	Poly	WB, IHC
◆ Calbindin D-28K	NBP2-50048	H M R +	Mono	WB, ICC
◆ Doublecortin	NBP1-92684	H M R +	Mono	WB, ICC
◆ Enolase 2/Neuron-Specific Enolase	MAB5169	H	Mono	ICC, IHC, IP
	AF5169	H M	Poly	WB, IHC, SW
◆ MAP2	NBP1-92711	H M R +	Mono	WB, ICC
	MAB8304	H	Mono	ICC, IHC
◆ NeuroD1	AF2746	H M	Poly	WB, ICC
◆ NF-H	NB300-135	H M R +	Poly	WB, ICC, IHC, ELISA
	AF3108	H	Poly	WB, IHC
◆ NF-L	NB300-131	H M R +	Poly	WB, ICC, IHC
	MAB2216	H	Mono	WB, IHC
◆ NF-M	NB300-133	H M R +	Poly	WB, ICC, IHC
	AF3029	H	Poly	WB, IHC
◆ PSD-93	NB300-546	H M R	Poly	WB, ICC, IHC
◆ PSD-95	NB300-556	H M R +	Mono	WB, ICC, IHC, B/N, CHIP, FC, IP
◆ RBFOX3/NeuN	NBP1-77686	H M R +	Poly	WB, ICC, IHC
◆ Tau	MAB3494	Ms	Mono	WB, IHC
	AF3494	Ms	Poly	WB, IHC
◆ β -III Tubulin	NB100-1612	H M R	Poly	WB, ICC, IHC
◆ β -III Tubulin (Clone TuJ-1), Neuron-Specific	MAB1195	All Species	Mono	WB, ICC, SW
◆ UCH-L1/PGP9.5	MAB6007	H	Mono	WB, IHC, IP, SW



NeuN in Mouse Brain. NeuN, also called RBFOX3, was detected in immersion-fixed paraffin-embedded sections of mouse brain using a Rabbit Anti-Human/Mouse/Rat RBFOX3/NeuN Antigen Affinity-Purified Polyclonal Antibody (Novus Biologicals, Catalog # NBP1-77686). The cerebellar tissue was stained using HRP and DAB (brown), and counterstained with hematoxylin (blue).



Enolase 2 in Human Brain. Enolase 2, also called Neuron-Specific Enolase, was detected in immersion-fixed paraffin-embedded sections of human brain using a Human/Mouse Enolase 2/Neuron-Specific Enolase Antigen Affinity-Purified Polyclonal Antibody (Catalog # AF5169). Prior to incubation with the primary antibody, the tissue was subjected to heat-induced epitope retrieval using Antigen Retrieval Reagent-Basic (Catalog # CTS013). The tissue was stained using the Anti-Sheep HRP-DAB Cell & Tissue Staining Kit (Catalog # CTS019, brown) and counterstained with hematoxylin (blue). Specific staining was localized to cytoplasm. All cited reagents are from R&D Systems.



NF-H in Human Brain. Neurofilament (NF)-H was detected in immersion-fixed paraffin-embedded sections of human brain using a Goat Anti-Human NF-H Antigen Affinity-Purified Polyclonal Antibody (Catalog # AF3108). The tissue was stained with the Anti-Goat HRP-DAB Cell & Tissue Staining Kit (Catalog # CTS008, brown) and counterstained with hematoxylin (blue). All cited reagents are from R&D Systems.

Dendritic Markers



Select R&D Systems® and Novus Biologicals® Antibodies

Marker	Catalog #	Species	Clonality	Applications
◆ ARC/ARG3.1	NBP1-56929	H	Poly	WB, IHC

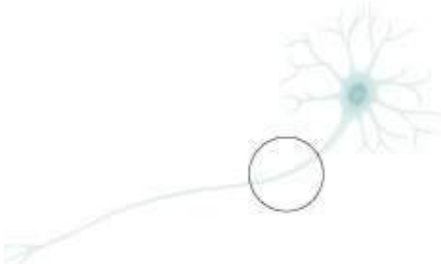


Cytoplasmic

ARC/ARG3.1 MAP2
Drebrin 1 SAP102

◆	Drebrin 1	NB100-1951	H M R +	Mono	WB, ICC, IHC, IP
◆		AF7739	H	Poly	WB, ICC, SW
◆	MAP2	NBP1-92711	H M R +	Mono	WB, ICC
◆		MAB8304	H	Mono	ICC, IHC
◆	SAP102	NBP1-87691	H M R	Poly	WB, IHC

Axonal Markers



Cytoplasmic

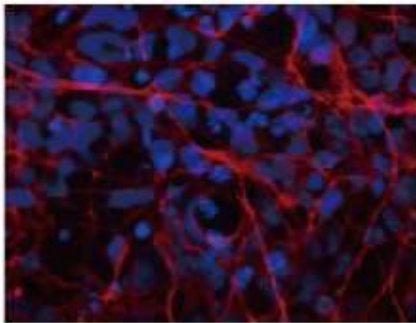
Kinesin 5A NF-L
Kinesin 5B Peripherin
L1CAM Tau
NF-H β -III Tubulin

Cell Surface

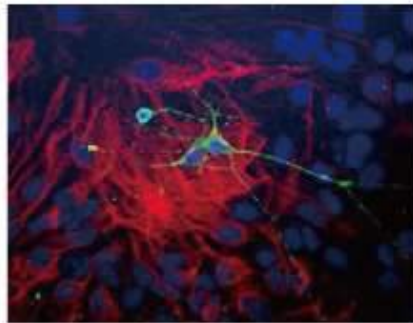
L1CAM

Select R&D Systems® and Novus Biologicals® Antibodies

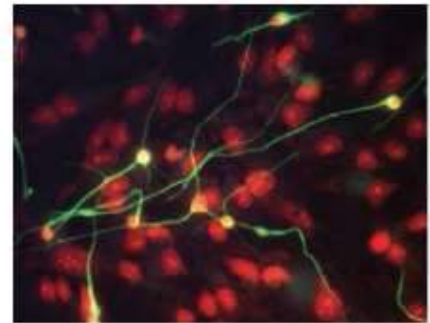
	Marker	Catalog #	Species	Clonality	Applications
◆	Kinesin 5A	NBP1-76816	H M R	Poly	WB, ICC, IHC, ELISA
◆	Kinesin 5B	NBP2-58451	H M R	Poly	ICC, IHC
◆	L1CAM	NB100-2682	H M	Mono	WB, ICC, IHC, CyTOF, ELISA, FC, IP
◆		AF277	H	Poly	WB, IHC
◆	NF-H	NB300-135	H M R +	Poly	WB, ICC, IHC, ELISA
◆		AF3108	H	Poly	WB, IHC
◆	NF-L	NB300-131	H M R +	Poly	WB, ICC, IHC
◆		MAB2216	H	Mono	WB, IHC
◆	Peripherin	NB300-137	H M R +	Poly	WB, ICC, IHC, ELISA
◆	Tau	MAB3494	Ms	Mono	WB, IHC
◆		AF3494	Ms	Poly	WB, IHC
◆	β -III Tubulin	NB100-1612	H M R	Poly	WB, ICC, IHC
◆	β -III Tubulin (Clone TuJ-1), Neuron Specific	MAB1195	All Species	Mono	WB, ICC, SW



MAP2 in Human Embryonic Stem Cells. Microtubule-Associated Protein 2 (MAP2) was detected in immersion-fixed human embryonic stem cells/neurospheres using a Mouse Anti-Human MAP2 Monoclonal Antibody (Catalog # MAB8304). The cells were stained using the NorthernLights™ 557-Conjugated Donkey Anti-Mouse IgG Secondary Antibody (Catalog # NL007, red) and counterstained with DAPI (blue). All cited reagents are from R&D Systems.



β -III Tubulin in Neonatal Mouse Neurons. β -III Tubulin was detected in fixed dissociated cell cultures of neonatal mouse brain using a Chicken Anti-Human/Mouse/Rat β -III Tubulin Antigen Affinity-Purified Polyclonal Antibody (Novus Biologicals, Catalog # NB100-1612; green). The cells were also stained for GFAP (red) and counterstained with DAPI (blue).



β -III Tubulin in Differentiated Human Neural Progenitor Cells. β -III Tubulin was detected in immersion-fixed differentiated human neural progenitor cells using a Mouse Anti-Neuron-Specific β -III Tubulin (Clone TuJ-1) Monoclonal Antibody (R&D Systems, Catalog # MAB1195). The cells were stained (green) and counterstained (red).

Species Key: H Human M Mouse R Rat Ms Multispecies + Additional Species Available

Applications Key: B/N Blocking/Neutralization ChIP Chromatin Immunoprecipitation CyTOF CyTOF-Ready DB Dot Blot ELISA (ELISA Capture and/or Detection)

EM Electron Microscopy FA Functional Assay FC Flow Cytometry GS Gel Shift ICC Immunocytochemistry IHC Immunohistochemistry IP Immunoprecipitation IV In Vitro

PEP-ELISA Peptide-ELISA RI Radioimmunoassay SW Simple Western™ WB Western blot

Indicates an R&D Systems® antibody ◆ Indicates a Novus Biologicals® antibody



서울특별시 송파구 송파대로 201 테라타워 2 A동 1113호 (문정동 642번지)



02-881-5432 | FAX : 02-881-5454



techserv@woongbee.com

제품 상담 : 학술마케팅팀 한소영 (techserv@woongbee.com / 02-881-5432 내선 731)

웅비 Assay Service Luminex / ELISA / Western

Time Saving !!! Quality UP !!!



웅비 New Assay Service OPEN

Auto Western Blot with *Wes*

새로운 분석서비스를 만나보세요



Wes
R&D cert. Abs.
Auto Western blot