

## Antibodies for **NEUROSCIENCE** Markers

**R&D SYSTEMS**  
a biotechne brand

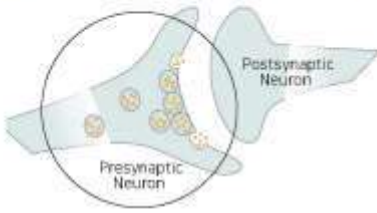
**NOVUS**  
BIOLOGICALS  
a biotechne brand

biotechne R&D Systems와 Novus 에서는 axon guidance와 pattern formation 같은, 발달 과정 부터 노화 과정 및 신경 퇴행성 질환에 관련된 신경계 기능 의 여러 측면을 연구할 수 있는 다양한 tool을 제공합니다

### Abs Quality is Our Pride!

- ✓ Very high sensitivity and specificity
- ✓ Guaranteed 100% for quality and reproducibility
- ✓ Customizing Order
- ✓ Sample Size Abs 출시

# Presynaptic Markers



## \*Cytoplasmic (plasma membrane)

GAP-43                      SNAP25  
SNAP23                      Syntaxin 1A

## \*Cytoplasmic (synaptic membrane)

SV2A                      Synaptotagmin-1  
Synapsin I                Synaptotagmin-4  
Synapsin II                VAMP-1  
Synaptogyrin 1            VAMP-2  
Synaptophysin

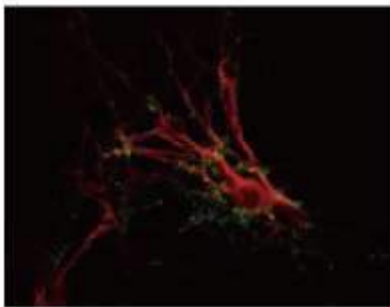
## Cell Surface

Neurexin 3/NRXN3            VIAAT/SLC32A1/VGAT  
VGLUT1/SLC17A7

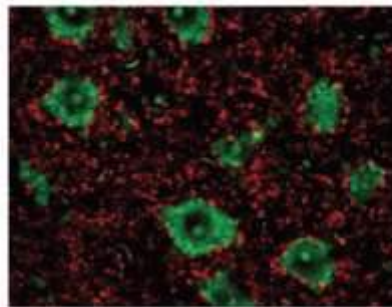
\*Cytoplasmic marker is found associated with the membrane of the listed cell structure.

## Select R&D Systems® and Novus Biologicals® Antibodies

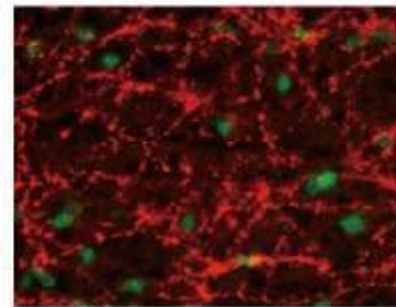
Marker	Catalog #	Species	Clonality	Applications
● GAP-43	NB300-143	H M R +	Poly	WB, ICC, IHC
● Neurexin 3/NRXN3	AF5269	H M	Poly	WB, IHC
● SNAP23	AF6306	H	Poly	WB, ICC
● SNAP25	AF5946	H M R	Poly	WB, ICC
● SV2A	NBP1-82964	H M R	Poly	WB, ICC, IHC, IP
● Synapsin I	NB300-104	H M R +	Poly	WB, ICC, IHC, IP
● Synapsin II	NBP2-58134	H M R	Poly	ICC
● Synaptogyrin 1	NBP1-77371	H M R	Poly	WB, ICC, IHC, ELISA
● Synaptophysin	NBP2-25170	H M R +	Poly	WB, ICC, IHC
	MAB5555	H	Mono	ICC, IHC
● Synaptotagmin-1	NBP1-91499	M +	Poly	WB, ICC
	MAB43641	R	Mono	WB, IHC, IP
● Synaptotagmin-4	NBP2-13408	H	Poly	WB, ICC, IHC
● Syntaxin 1A	MAB7237	H	Mono	WB, IHC
	AF7237	H M R	Poly	WB, ICC
● VAMP-1	AF4828	H M	Poly	WB, IHC
● VAMP-2	MAB5136	H M	Mono	WB, IHC
● VGLUT1/SLC17A7	NBP2-46627	H M R	Mono	WB, IHC
	MAB9054	H	Mono	IHC
● VIAAT/SLC32A1/VGAT	NBP2-20857	H M R	Poly	ICC, IHC
	MAB6847	H	Mono	ICC



**Synapsin I in Rat Caudate Neurons.** Synapsin I was detected in fixed rat caudate neurons using a Rabbit Anti-Human/Mouse/Rat Synapsin I Polyclonal Antibody (Novus Biologicals, Catalog # NB300-104). The cells were stained Ig(reen) and then counterstained for MAP proteins (red).

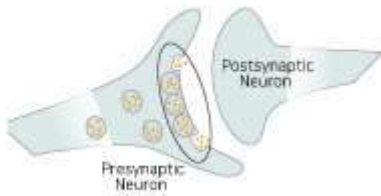


**Synaptotagmin-1 in Rat Spinal Cord.** Synaptotagmin-1 was detected in perfusion-fixed frozen sections of rat spinal cord using a Mouse Anti-Rat Synaptotagmin-1 Monoclonal Antibody (R&D Systems, Catalog # MAB43641). The tissue was stained (red) and counterstained (green).



**VAMP-1 in Mouse Spinal Cord.** Vesicle-Associated Membrane Protein 1 (VAMP-1), also called Synaptobrevin-1, was detected in perfusion-fixed frozen sections of mouse spinal cord using a Goat Anti-Human/Mouse VAMP-1 Antigen Affinity-Purified Polyclonal Antibody (Catalog # AF4828). The tissue was stained with the NorthernLights™ 557-Conjugated Donkey Anti-Goat IgG Secondary Antibody (Catalog # NL001, red) and counterstained (green). All cited reagents are from R&D Systems.

## Active Zone Markers



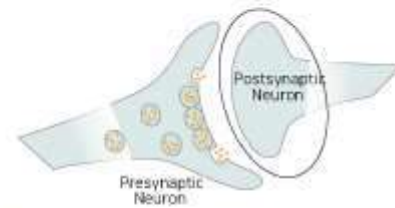
### Cytoplasmic

Bassoon                      Piccolo

Select R&D Systems® and Novus Biologicals® Antibodies

Marker	Catalog #	Species	Clonality	Applications
Bassoon	NB120-13249	M R	Mono	WB, ICC, IHC, IP
Piccolo	NBP1-49453	M	Mono	WB, ICC, ELISA
	AF7935	H	Poly	IHC

## Postsynaptic Markers



### Cytoplasmic

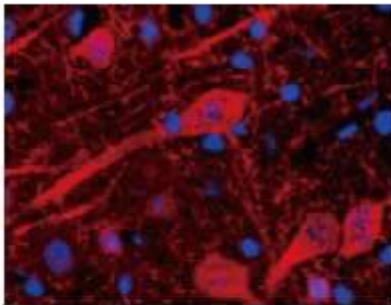
Gephyrin/GPHN                      Shank1  
HOMER1                                      Shank2  
PSD-95                                      Shank3  
SAP102

### Cell Surface

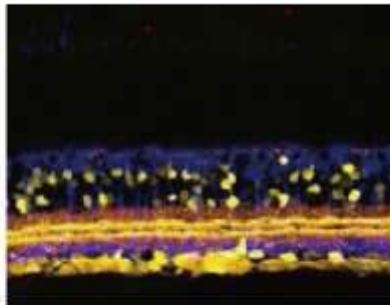
Neuroigin 1/NLGN1                      Neuroigin 2/NLGN2

Select R&D Systems® and Novus Biologicals® Antibodies

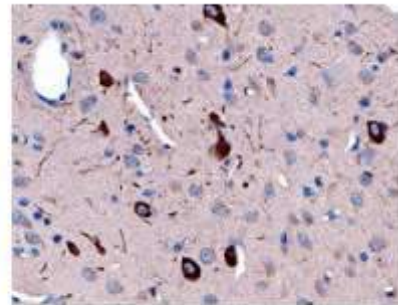
Marker	Catalog #	Species	Clonality	Applications
Gephyrin/GPHN	MAB7519	H M	Mono	WB, IHC
	AF7519	H	Poly	WB, IHC
HOMER1	NBP1-44999	H M R +	Poly	WB, ICC
Neuroigin 1/NLGN1	AF4340	H R	Poly	WB, IHC
Neuroigin 2/NLGN2	NBP2-41299	H M R	Poly	WB, ICC, IHC, ELISA
PSD-95	NB300-556	H M R +	Mono	WB, ICC, IHC, B/N, CHIP, FC, IP
SAP102	NBP1-87691	H M R	Poly	WB, IHC
Shank1	NB300-167	H M R	Poly	WB, ICC, IHC
	MAB7035	H	Mono	IHC
Shank2	AF7035	H	Poly	IHC
	NBP2-42189	H R	Mono	WB, ICC, IHC



**NLGN1 in Rat Brain.** Neuroigin 1 (NLGN1) was detected in perfusion-fixed frozen sections of rat brain using a Sheep Anti-Rat Neuroigin 1/NLGN1 Antigen Affinity-Purified Polyclonal Antibody (Catalog # AF4340). The tissue was stained using the NorthernLights™ 557-Conjugated Donkey Anti-Sheep IgG Secondary Antibody (Catalog # NL010; red) and counterstained with DAPI (blue). Specific staining was localized to neuronal cell bodies, processes, and dendritic spines. All cited reagents are from R&D Systems.



**SHANK1 in Mouse Retina.** SHANK1 was detected in fixed sections of mouse retina using a Rabbit Anti-Human/Mouse/Rat SHANK1 Antigen Affinity-Purified Polyclonal Antibody (Novus Biological, Catalog # NB300-167; yellow).



**Neuropilin-1 in Rat Brain.** Neuropilin-1 was detected in immersion-fixed paraffin-embedded sections of rat brain using a Goat Anti-Mouse/Rat Neuropilin-1 Antigen Affinity-Purified Polyclonal Antibody (Catalog # AF586) and a Donkey Anti-Goat IgG VisiDye™ HRP Polymer Antibody (Catalog # VC004). The tissue was stained using DAB (brown) and counterstained with hematoxylin (blue). Specific staining was localized to the cytoplasm in neuronal cell bodies and projections. All cited reagents are from R&D Systems.



서울특별시 송파구 송파대로 201 테라타워2A동 1113호 (문정동 642번지)



02-881-5432 | FAX : 02-881-5454



techserv@woongbee.com

제품 상담 : 학술마케팅팀 안국희 ([techserv@woongbee.com](mailto:techserv@woongbee.com) / 02-881-5432 내선 741)

**웅비 Assay Service**  
**Luminex / ELISA / Western**  
 Time Saving !!! Quality UP !!!

**웅비 New Assay Service OPEN**  
 Auto Western Blot with *Wes*  
 새로운 분석서비스를 만나보세요



사이트명 : (주)웅비메디텍 / 상호: (주)웅비메디텍

전화: 02-881-5432 / FAX: 02-881-5454

서울특별시 송파구 송파대로201동 테라타워A동 1113호 (문정동642번지)

Copyright©All Rights Reserved Any questions to woongbee@woongbee.com

-2017년 12월 05일-