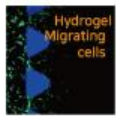


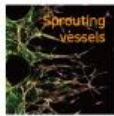
AIM-Chip

- Easy-to-use
- Real time 현미경 관찰
- 다양한 cell type co-culture
- Interstitial flow 조절
- Chemical gradients 가능
- Variety of clinical trials

3D Cell Research on-a-Chip



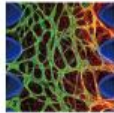
- Cell migration
- Invasion



- Angiogenesis
- Screening of anti-angiogenic compounds



- Permeability test



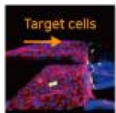
- Vascular networks



- Metastasis
- Dissemination of tumor cells

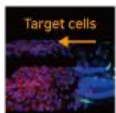


- Cell-cell interactions



- Extravasation

* 모든 사진은 실제 현미경으로 찍은 사진입니다.



- Intravasation

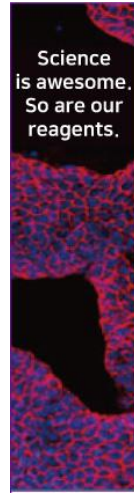


<http://www.aimbiotech.com/>

첫 구매고객 50% SALE

기간: 9월 1일 ~ 10월 31일

<http://www.woongbee.com/>



Innovative, High-Quality Scientific Tools



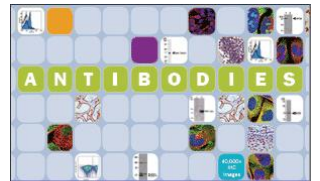
Learn more

R&D SYSTEMS
a biotechne brand

R&D SYSTEMS
a biotechne brand

Tools For Cell Biology Research

R&D SYSTEMS
a biotechne brand



웅비메디텍
www.woongbee.com
02.881.5432

NOVUS BIOLOGICALS
a biotechne brand

Try our Antibody Matchmaker!



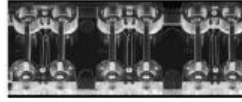
Switch To A Vendor you Can Rely On!

웅비메디텍
www.woongbee.com
02.881.5432

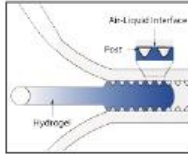
NOVUS BIOLOGICALS
a biotechne brand

AIM Chip

- Additional features:**
- Microscope slide format (75mm X 25mm)
 - Sterile & ready-to-use
 - Designed for modular expansion with AIM Luer Connectors.
 - Fits into a 386-well compliant AIM holder

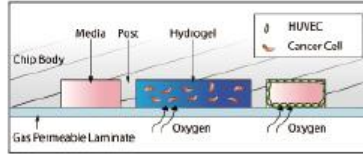


Compatible with Polymerisable Gels



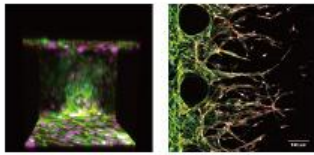
- 실험에 따라 다양한 ECM 사용가능
- Collagen or Fibrinogen
- Matrigel or other hydrogel etc.

Gas Exchange



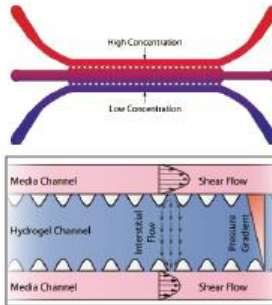
- Gas Permeable
- Hypoxia 실험도 가능

Optically Clear



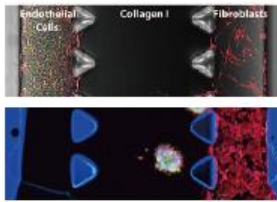
- 다양한 현미경으로 관찰 가능
- Phase contrast
- Epifluorescence
- 2-photon & confocal microscopy

Control of Flow & Chem. Gradients



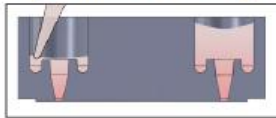
- 3D hydrogel 및 microenvironment 조절 가능
- Chemical gradients
- Interstitial flow 조절 가능

Co-culture Models



- 3D와 2D 환경에서 서로 다른 Cell 타입의 co-culture
- Cell-Cell interaction
- Cell-Cell communication

Rapid Media Exchange



- 빠르고 쉬운 Media exchange

웅비메디텍

02.881.5432

신개념 3D Matrix

VitroGel™ 3D

TheWell
BIOSCIENCE

Simple Cell harvesting



(주)웅비메디텍
WOONGBEE MeDiTech, Inc.

제품 상담 : 학술마케팅팀 안국희 (techserv@woongbee.com / 02-881-5432 내선 741)

Leaders Trust

(주)웅비메디텍
WOONGBEE MeDiTech, Inc.

주소 : (05854) 서울특별시 송파구 송파대로 201 테라타워2 A동 1113호 (문정동 642번지)
전화 : 02-881-5432 | FAX : 02-881-5454
FAX : 031-696-5901 (업체/대리점 전용)

• 본 메일은 발신 전용으로, 회신되지 않습니다.
• 메일을 원하지 않으시면 이곳을 클릭하시거나 webmaster@woongbee.com으로 연락주시기 바랍니다.
(If you don't want this e-News information, click here, please.)

-2017년 9월 5일-