

R&D SYSTEMS a biotechne brand **과 함께 하는 Immunology Research** 02.881.5432



T Cells

Cell	PBMC	Isolate	Stimulate	Analyze	
T helper cell (CD4+)	h/m Erythrocyte Lysing Kit (#WL1000/WL2000)	h/m T Cell Enrichment Column (#HTCC/ HCD4C/ MTCC/ MCD4C)	DynaBeads h/m T-Activator CD3/CD28 (#11131D/ 11132D/ 11452D/ 11453D)	h/m Th1 IL-12 IL-18 IL-27 IFN- γ	h/m Th1 Cell 4-ColorFlow Cytometry Kit (#FMC009/FMC010) Cell Surface - h/m CCR1, CCR5, CXCR3, IFN- γ R, IL-12R β 2, IL-18Ra, TCCR/W SX-1 Transcription Factors - h/m STAT1, STAT4, T-bet/TBX21 Secretes - h/m IFN- γ , IL-2, -10, TNF- α , b, GM-CSF
				h/m Th2 IL-4 IL-25 IL-33 TSLP	h/m Th2 Cell 4-ColorFlow Cytometry Kit (#FMC011/FMC012) Cell Surface - h/m CCR3, CCR4, CCR8, CXCR4, IFN- γ R, IL-4Ra, IL-17BR/IL-17RB, ST2/IL-1R4, TSLPR Transcription Factors - h/m GATA-3, IRF4, STAT5, STAT6 Secretes - h/m IL-4, 5, 9, 10, 13, 21, 31, 3
				h/m Th22 IL-6 TGF- β TNF- α	Cell Surface - h/m CCR4, CCR6, CCR10, IL-6Ra, IL-21R, TGF- β RII+ Transcription Factors - h/m AHR, Batf, STAT3 Secretes - h/m CCL7/MCP-3, CCL15/MIP-1d, FGFs, IL-10, -13, -21, -22, TNF- α
				h/m Th9 IL-4 TGF- β	Cell Surface - h/m IL-4Ra, IL-17BR/IL-17RB, TGF- β RII Transcription Factors - h/m IRF4, PU.1 Secretes - h/m IL-9, -10
				h/m Treg TGF- β IL-2	h/m Regulatory T Cell 3-ColorFlow Kit (#FMC021/FMC022) h/m/r FoxP3 Allophycocyanin Affinity Purified PAb (#IC3240A) Cell Surface - h/m 5' Nucleotidase/CD73, CD5, CTLA-4, LAP, CD39/ENTPD1, Folate Receptor 4(FOLR4), G1TR/TNFRSF18, IL-2Ra/CD25, Integrin α E/CD103, L-Selectin/CD62L, LRRC32/GARP, LAG-3/CD223, OX40/CD134 Transcription Factors - h/m FoxP3, STAT5 Secretes - h/m Galectin-1, IL-10, 35, TGF- β
				h/m Th17 TGF- β IL-6 IL-21 IL-23 IL-1 β	h/m Th17 4-ColorFlow Cytometry Kit (#FMC007) h Phospho-STAT3 (Y705) Affinity Purified PAb (#AF4607) h/m/r STAT3 MAb (Clone 232209), Mouse IgG2B (#MAB1799) h/m Phospho-STAT3 (Y705) Duoset IC (#DYC4607B-2) Cell Surface - h/m CCR4, CCR6, IL-1R, IL-6Ra, IL-21R, IL-23R, TGF- β RII Transcription Factors - h/m Batf, IRF4, ROR α , ROR γ /RORC2, STAT3 Secretes - h/m CCL20/MIP-3a, IL-17A, 17F, 21, 22, 26, 6
Treg - Th17 Interaction			h/m IL-6, 23, TGF- β , IL-2 h/m IL-2, TGF- β , Retinoic Acid		

- CTL (Cytotoxic T cell) CD8+ / Follicular helper T (T_{fh}) cell
- **PBMC**; h/m Erythrocyte Lysing Kit (#WL1000/ WL2000)
- **Isolate**; h/m T Cell Enrichment Column (#HTCC/ HCD8C/ MTCC/ MCD8C)
- Natural killer T (NKT) cell - **PBMC** ; h/m Erythrocyte Lysing Kit (#WL1000/ WL2000)

B/ NK Cells

Cell	PBMC	Isolate	Stimulate	Analyze
B cell	h/m Erythrocyte Lysing Kit (#WL1000/WL2000)	h/m/r B Cell Isolation Kit (#MAGH103/MAGM204/MAGR303)	h/m CD40L	Secretes - h/m IL-2, IL-4, IL-5
NK cell	h/m Erythrocyte Lysing Kit (#WL1000/WL2000)	h/m NK Cell Isolation Kit (#MAGH109)	h/m IL-2	

- Monocyte-Macrophage - **Analyze, Secretes** - h/m IL-12, IL-18
- Basophil - **Analyze**; Buhlmann Flow CAST (CCR3-PE)

Science is awesome. So are our reagents.

Innovative, High-Quality Scientific Tools

Learn more

R&D SYSTEMS a biotechne brand

ANTIBODIES

웅비메디텍 www.wongbi.com 02.881.5432

NOVUS BIOLOGICALS a biotechne brand

Try our Antibody Matchmaker!

Switch To A Vendor you Can Rely On!

웅비메디텍 www.wongbi.com 02.881.5432

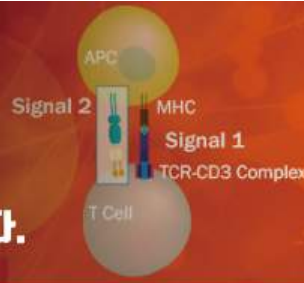
NOVUS BIOLOGICALS a biotechne brand

Immunoassay Solutions

View Platforms

R&D SYSTEMS a biotechne brand

Immunotherapy 연구를 위한 Gold Standard ELISA R&D systems에서 제공 해 드립니다.



Molecule	Species	Quantikine® ELISA Kits (Catalog #)	DuoSet® ELISA Development Systems (Catalog #)
Ig Superfamily			
B7/CD28 Families			
B7-1/CD80	Human		DY140
	Mouse		DY740
B7-H1/PO-L1	Human	DB7H10	DY156
	Cynomolgus	DB7H10	
B7-H3	Human	DB7H30	DY1949
B7-H5/VISTA	Mouse		DY1005
CTLA-4	Mouse		DY476
ICOS	Human		DY169
	Human		DY1086
PD-1	Mouse		DY1021
	Human		DY1224
Nectin and Nectin-like Binding Receptors			
OR10M	Human		DY1695
SLAM Family			
CD48/SLAMF2	Mouse		DY3327
SLAM/CD150	Human		DY164
	Mouse		DY4330
TIM Family Receptors & Ligands			
Galectin-3	Human	DGAL30	DY1154
	Mouse		DY1197
TIM-1/HRM-1/HVCR	Human	DM100	DY1750B
	Mouse	MM100	DY1817
TIM-3	Human	DTM30	DY2365

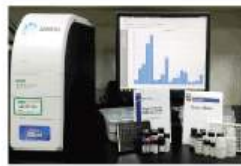
Molecule	Species	Quantikine® ELISA Kits (Catalog #)	DuoSet® ELISA Development Systems (Catalog #)
TNF Superfamily			
Type V Subfamily Receptors & Ligands			
4-1BB/TNFRSF9/CD137	Human		DY638
	Mouse		DY937
CD27/TNFRSF7	Human		DY382
	Mouse		DY574
CD27 Ligand/TNFSF7	Mouse		DY783
CD30/TNFRSF8	Human		DY6126
	Mouse		DY852
CD30 Ligand/TNFSF8	Mouse		DY732
GITR/TNFRSF18	Human		DY689
	Mouse		DY524
GITR Ligand/TNFSF18	Human		DY694
	Mouse		DY2177
OX40 Ligand/TNFSF4	Mouse		DY1236
Type I Subfamily Receptors & Ligands			
CD40/TNFRSF5	Human	DCD40	DY632
	Mouse	MOCD40	DY097
	Human	DCDL40	DY617
CD40 Ligand/TNFSF5	Mouse		DY1163
	Human		DY943
DR3/TNFRSF25	Mouse		DY2437
HVEM/TNFRSF14	Human		DY356
	Human	DLT00	DY664
LIGHT/TNFSF14	Mouse		DY1794



(주)웅비메디텍
WOONGBEE MeDiTech, Inc.

서울특별시 송파구 송파대로 201 테라타워2 A동 1113호 (문정동 642번지)
전화 : 02-881-5432 | FAX : 02-881-5454

웅비메디텍
Assay
Service



- Luminex
- ELISA

Time Saving !!! www.woongbee.com
Quality UP !!! 02-881-5432

웅비메디텍 Assay Service 홈페이지!! CLICK~CLICK!!

너무 바쁜데 분석 장비까지?!!! 웅비메디텍에 맡기고 실험스트레스에서 해방되세요!!

제품 상담 : 학술마케팅팀 정지은 (techserv@woongbee.com / 02-881-5432 내선 752)

Leaders Trust



(주)웅비메디텍
WOONGBEE MeDiTech, Inc.

주소 : (05854) 서울특별시 송파구 송파대로 201
테라타워2 A동 1113호 (문정동 642번지)
전화 : 02-881-5432 | FAX : 02-881-5454
FAX : 031-696-5901 (업체/대리점 전용)

- 본 메일은 발신 전용으로, 회신되지 않습니다.
- 메일을 원하지 않으시면 [이곳을 클릭](mailto:webmaster@woongbee.com)하시거나 webmaster@woongbee.com으로 연락주시기 바랍니다.
(If you don't want this e-News information, click here, please.)