



Biotechne로 하나가 된 R&D와 NOVUS를 웅비메디텍에서 만나보세요

10만 가지 이상의 Antibodies

다양한 Applications



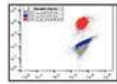
IHC

alpha-Tubulin



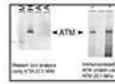
ICC/IF

Collagen-I-alpha-1



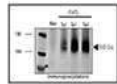
Flow cytometry

HIF-1-alpha



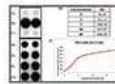
Western Blot

ATM



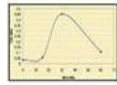
IP

HIF-1-alpha

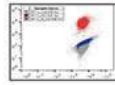


ChIP

TRF-2



ELISA Assay



Peptide blocking



Wes
R&D certi. Abs.
Auto Western blot

웅비메디텍 Assay Service

Luminex
ELISA

Time Saving !!! woongbee.com
Quality Up !!! 031-776-3300

웅비메디텍 Assay Service 홈페이지!! CLICK~CLICK!!

너무 바쁜데 분석 장비까지?!!! 웅비메디텍에 맡기고 실험스트레스에서 해방되세요!!

제품 상담 : 학술마케팅팀 정지은(techserv@woongbee.com / 02-881-5432 내선 752)

Leaders Trust



(주)웅비메디텍
WOONGBEE MeDiTech, Inc.

주소 : (05854) 서울특별시 송파구 송파대로 201
테라타워2 A동 1113호 (문정동 642번지)

전화 : 02-881-5432 | FAX : 02-881-5454
FAX : 031-696-5901 (업체/대리점 전용)

- 본 메일은 발신 전용으로, 회신되지 않습니다.
- 메일을 원하지 않으시면 **이곳을 클릭**하시거나 webmaster@woongbee.com으로 연락주시기 바랍니다.
(If you don't want this e-News information, click here, please.)

2017.10.19