



Monthly Spotlight of Stem Cell

Coming monthly STEM CELLS in the NEWS



R&D Systems에서 Stem Cell에 관련하여 매 달 주제별로 Spotlight 소식을 알려드립니다.

- Mesenchymal Stem Cell

: MSC 분화와 관련해서 Wnt의 새로운 target! Chemokien-Like Receptor 1

Flow cytometry antibody를 확인해보세요.

: R&D systems의 MSC Functional ID Kit를 이용해서 MSC 분화능을 확인한 논문이 업데이트 되었습니다!

- Cancer Stem Cell

: S100A4, Glioblastoma의 EMT를 조절하는 인자?!

*위에서 소개되는 관련 제품들을 R&D Systems를 통해 확인하실수 있습니다.

MESENCHYMAL STEM CELL

MESENCHYMAL STEM CELL

Spotlight

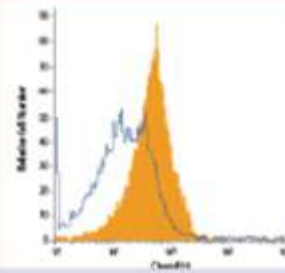
Chemokine-Like Receptor 1
Is Novel Wnt Target
For MSC Differentiation

Read Full
Article In:

STEM
CELLS



Chemokine-Like Receptor 1
Is Novel Wnt Target
For MSC Differentiation



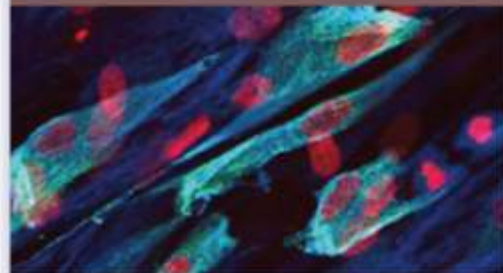
MSCs Shown To
Induce Metastasis In
Colon Cancer

Read Full
Article In:

NEOPLASIA



MSC Functional ID Kit:
View Publications
Using it to Verify MSCs



CANCER STEM CELL

CANCER STEM CELL

Spotlight

Here's your monthly snapshot of exciting research, news, and tools that support cancer stem cell research!

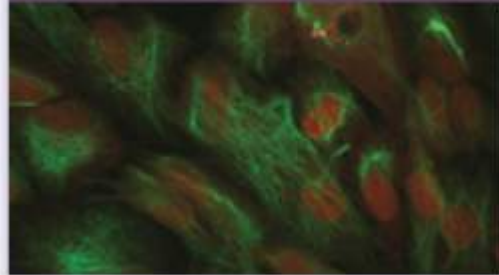
S100A4 is Critical for
Glioblastoma EMT and
Stemness

Read Full
Article In:

CANCER
RESEARCH



Easily Assess EMT With
this 3-Color Immunocyto-
chemistry Kit



 **웅비메디텍**
Assay
Service



- **Luminex**
- **ELISA**

Time Saving !!!
Quality UP !!! **02-881-5432**

웅비메디텍 Assay Service 홈페이지!! CLICK~CLICK!!

너무 바쁜데 분석 장비까지?!!! 웅비메디텍에 맡기고 실험스트레스에서 해방되세요!!



WOONGBEE MeDiTech

(주)웅비메디텍

Tel. 02-881-5432

Fax. 02-881-5454

<http://www.woongbee.com/>

-2017년 10월 13일 -