

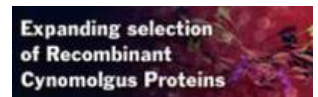


# Auto - Western

gel-free, blot-free, hands-free



- High Sensitivity:** 일반 WB보다 8배 높은 sensitivity
- Less Sample & less Ab:** 0.3~1.2 µg sample
- Multiplex Western :** 최대 4개 targets 동시 분석 / sample
- High-Throughput :** 최대 96 data points = 24 samples x 4 Abs
- 3hrs Run time :** from loading to result
- 정량 가능 :** 재조합단백질 이용
- Full Automation :** 높은 재현성
- 1,000개 이상 Certified BioTechne (R&D + Novus) Abs
- 웅비 Assay Service 의뢰 가능



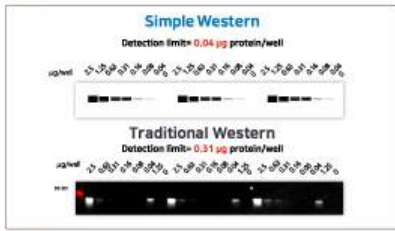


Wes

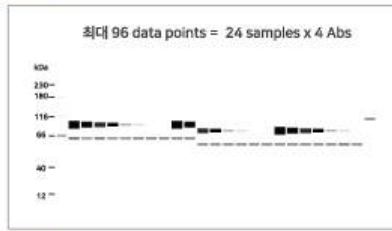
http://www.woongbee.com/

# Features & Advantages

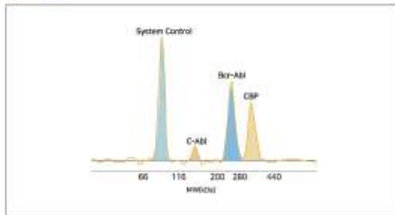
## 01 High-Sensitivity



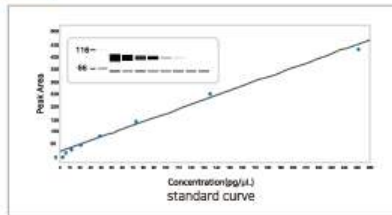
## 02 High-Throughput



## 03 Multiplex



## 04 Quantitation



## 05 용비 Assay Service 가능

- Western/ Luminex/ ELISA
- Cost Effectiveness
- Time Saving
- Quality Up

### Ordering Information

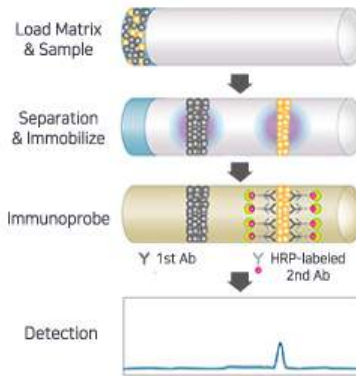
#### - Separation Module

8 x 13 capillary (2 ~ 40/ 12 ~ 230/ 66 ~ 440 kDa)  
8 x 25 capillary (2 ~ 40/ 12 ~ 230/ 66 ~ 440 kDa)

#### - Detection module

anti-human IgG/ anti-mouse/ anti-rabbit

### Automated Western Procedure(3hrs)



제품 상담 및 문의: 02-881-5432 techserv@woongbee.com



**용비 New Assay Service OPEN**  
Auto Western Blot with **Wes**  
새로운 분석서비스를 만나보세요

**용비 Assay Service**  
Luminex / ELISA / Western  
Time Saving !!! Quality UP !!!

## 용비메디텍 Assay Service 홈페이지!! CLICK~CLICK!!

너무 바쁜데 분석 장비까지?!!! 용비메디텍에 맡기고 실험스트레스에서 해방되세요!!

제품 상담 : 학술마케팅팀 한소영 (techserv@woongbee.com / 02-881-5432 내선 731)

Leaders Trust



주소 : ( 05854 ) 서울특별시 송파구 송파대로 201 테라타워2 A동 1113호 (문정동 642번지)  
전화 : 02-881-5432 | FAX : 02-881-5454  
FAX : 031-696-5901 (업체/대리점 전용)

• 본 메일은 발송 전용으로, 회신되지 않습니다.  
• 메일을 원하지 않으면 이곳을 클릭하시거나 webmaster@woongbee.com으로 연락주시기 바랍니다.  
(If you don't want this e-News information, click here, please.)

-2018년 01월 24일-